

Anti-Apaf-1 (human) Monoclonal Antibody (2E12)

Catalog Number: M00889-1

Overview

Product Name	Anti-Apaf-1 (human) Monoclonal Antibody (2E12)
Reactive Species	Human
Description	Boster Bio Anti-Apaf-1 (human) Monoclonal Antibody (2E12) catalog # M00889-1. Tested in ELISA, IP, IF, WB applications. This antibody reacts with Human.
Application	ELISA, IP, IF, WB
Clonality	Monoclonal 20000000000000
Formulation	Liquid. In PBS containing 0.02% sodium azide.
Storage Instructions	Store at -20°C for one year. For short term storage and frequent use, store at 4°C for up to one month. Avoid repeated freeze-thaw cycles.
Host	Rat
Uniprot ID	O14727

Technical Details

Immunogen	Recombinant human Apaf-1 (apoptosis protease-activating factor 1) N-terminal CARD and CED-4 homologous domains (aa 1-464) .
Form	Liquid. In PBS containing 0.02% sodium azide.
Concentration	0.5-1mg/ml, actual concentration vary by lot. Use suggested dilution ratio to decide dilution procedure.
Purification	Protein G-affinity purified.
Suggested Dilutions	<p>Dilute the sample so that the expected range of concentrations fall within the detection range of this kit.</p> <p>If the expected range of concentration is unknown, a pilot test should be conducted to decide the optimal dilution ratio for your samples.</p> <p>Some PubMed article(s) citing the expression level of this target are as follows:</p> <p>Boster Bio's internal QC testing used:</p> <p>Immunohistochemistry (EM on frozen sections; for details see G. Hausmann, et al., below.)</p> <p>Suggested dilutions/conditions may not be available for all applications.</p> <p>Optimal conditions must be determined individually for each application.</p>

Anti-Apaf-1 (human) Monoclonal Antibody (2E12) (M00889-1) Images

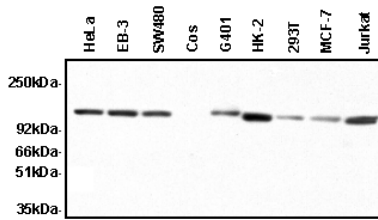


Figure 1. Western blot analysis of APAF1 using anti-APAF1 antibody (M00889-1). Electrophoresis was performed on a 5-20% SDS-PAGE gel at 70V (Stacking gel) / 90V (Resolving gel) for 2-3 hours. The sample well of each lane was loaded with 50ug of sample under reducing conditions. After Electrophoresis, proteins were transferred to a Nitrocellulose membrane at 150mA for 50-90 minutes. Blocked the membrane with 5% Non-fat Milk/ TBS for 1.5 hour at RT. The membrane was incubated with rabbit anti-APAF1 antigen affinity purified polyclonal antibody (Catalog # M00889-1) at 0.5 ug/mL overnight at 4°C, then washed with TBS-0.1%Tween 3 times with 5 minutes each and probed with a goat anti-Rat IgG-HRP secondary antibody at a dilution of 1:10000 for 1.5 hour at RT. The signal is developed using an Enhanced Chemiluminescent detection (ECL) kit (Catalog # SA1025) with Tanon 5200 system. A specific band was detected for APAF1.

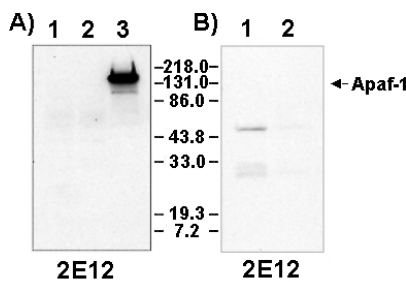


Figure 2. Western blot analysis of APAF1 using anti-APAF1 antibody (M00889-1). Electrophoresis was performed on a 5-20% SDS-PAGE gel at 70V (Stacking gel) / 90V (Resolving gel) for 2-3 hours. The sample well of each lane was loaded with 50ug of sample under reducing conditions. After Electrophoresis, proteins were transferred to a Nitrocellulose membrane at 150mA for 50-90 minutes. Blocked the membrane with 5% Non-fat Milk/ TBS for 1.5 hour at RT. The membrane was incubated with rabbit anti-APAF1 antigen affinity purified polyclonal antibody (Catalog # M00889-1) at 0.5 ug/mL overnight at 4°C, then washed with TBS-0.1%Tween 3 times with 5 minutes each and probed with a goat anti-Rat IgG-HRP secondary antibody at a dilution of 1:10000 for 1.5 hour at RT. The signal is developed using an Enhanced Chemiluminescent detection (ECL) kit (Catalog # SA1025) with Tanon 5200 system. A specific band was detected for APAF1.

1 Publications Citing This Product

1. PubMed ID: 28414198, Wang ZB, Zhang S, Li Y, Wang RM, Tong LC, Wang Y, Liu WY, Su DF, Tu Y, Zhang LC, Li L. Acta Pharmacol Sin. 2017 Apr 17. doi: 10.1038/aps.2016.172. LY333531, a PKCbeta inhibitor, attenuates glomerular endothelial cell apoptosis in the early stage of m...

Visit bosterbio.com/anti-apaf-1-human-monoclonal-antibody-2e12-m00889-1-boster.html to see all 1 publications.

Submit a product review to Biocompare.com

Submit a review of this product to Biocompare.com to receive a \$20 Amazon.com giftcard! Your reviews help your fellow scientists make the right decisions. Thank you for your contribution.



Anti-Apaf-1 (human) Monoclonal Antibody (2E12)