

Anti-VEGF Receptor 2 KDR Rabbit Monoclonal Antibody

Catalog Number: M00901

About KDR

Catalyzes the first step in leukotriene biosynthesis, and thereby plays a role in inflammatory processes.

Overview

Product Name	Anti-VEGF Receptor 2 KDR Rabbit Monoclonal Antibody
Reactive Species	Human
Description	Boster Bio Anti-VEGF Receptor 2 KDR Rabbit Monoclonal Antibody catalog # M00901. Tested in WB, IP applications. This antibody reacts with Human.
Application	IP, WB
Clonality	Monoclonal CIH-11
Formulation	Rabbit IgG in phosphate buffered saline, pH 7.4, 150mM NaCl, 0.02% sodium azide and 50% glycerol, 0.4-0.5mg/ml BSA.
Storage Instructions	Store at -20°C for one year. For short term storage and frequent use, store at 4°C for up to one month. Avoid repeated freeze-thaw cycles.
Host	Rabbit
Uniprot ID	P35968

Technical Details

Immunogen	A synthesized peptide derived from human VEGF Receptor 2
Isotype	Rabbit IgG
Form	Liquid
Concentration	Actual concentration vary by lot. Use suggested dilution ratio to decide dilution procedure.
Purification	Affinity-chromatography
Suggested Dilutions	<p>Dilute the sample so that the expected range of concentrations fall within the detection range of this kit.</p> <p>If the expected range of concentration is unknown, a pilot test should be conducted to decide the optimal dilution ratio for your samples.</p> <p>Some PubMed article(s) citing the expression level of this target are as follows:</p> <p>Boster Bio's internal QC testing used:</p> <p>WB 1:500-1:1000</p> <p>IP 1:20</p>

Anti-VEGF Receptor 2 KDR Rabbit Monoclonal Antibody (M00901) Images

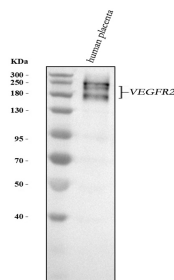


Figure 1. Western blot analysis of VEGFR2 using anti-VEGFR2 antibody (M00901).

Electrophoresis was performed on a 5-20% SDS-PAGE gel at 70V (Stacking gel) / 90V (Resolving gel) for 2-3 hours. The sample well of each lane was loaded with 30 ug of sample under reducing conditions.

Lane 1: human placenta tissue lysates.

After electrophoresis, proteins were transferred to a nitrocellulose membrane at 150 mA for 50-90 minutes. Blocked the membrane with 5% non-fat milk/TBS for 1.5 hour at RT. The membrane was incubated with rabbit anti-VEGFR2 antigen affinity purified monoclonal antibody (Catalog # M00901) at 1:1000 overnight at 4°C, then washed with TBS-0.1%Tween 3 times with 5 minutes each and probed with a goat anti-rabbit IgG-HRP secondary antibody at a dilution of 1:500 for 1.5 hour at RT. The signal is developed using an Enhanced Chemiluminescent detection (ECL) kit (Catalog # EK1002) with Tanon 5200 system. A specific band was detected for VEGFR2 at approximately 180-250 kDa. The expected band size for VEGFR2 is at 156 kDa.

2 Publications Citing This Product

1. PubMed ID: 25009634, Zhu Y, Tuerxun A, Hui Y, Abliz P. Exp Ther Med. 2014 Aug;8(2):647-651. Epub 2014 Jun 12. Effects Of Propranolol And Isoproterenol On Infantile Hemangioma Endothelial Cells In Vitro.
2. PubMed ID: 25550894, Liu M, Yang S, Zhang D, Shui P, Song S, Yao J, Dai Y, Sun Q. Int J Clin Exp Med. 2014 Nov 15;7(11):3859-69. Ecollection 2014. Fructopyrano-(1

Visit bosterbio.com/anti-vegf-receptor-2-rabbit-monoclonal-antibody-m00901-boster.html to see all 2 publications.

Submit a product review to Biocompare.com

Submit a review of this product to Biocompare.com to receive a \$20 Amazon.com giftcard! Your reviews help your fellow scientists make the right decisions. Thank you for your contribution.



Anti-VEGF Receptor 2 KDR Rabbit Monoclonal Antibody