

Anti-PAX8 (Renal Cell Marker) Monoclonal Antibody

Catalog Number: M00943

About PAX8

Recognizes a protein of 62kDa, identified as PAX8. It is a member of the paired box (PAX) family of transcription factors. This nuclear protein is involved in thyroid follicular cell development and expression of thyroid-specific genes. Mutations in this gene have been associated with thyroid dysgenesis, thyroid follicular carcinomas, and atypical thyroid adenomas. PAX-8 is expressed in the thyroid (and associated carcinomas), non-ciliated mucosal cells of the fallopian tubes, and simple ovarian inclusion cysts, but not normal ovarian surface epithelial cells. PAX-8 is expressed in a high percentage of ovarian serous, endometrioid, and clear cell carcinomas, but only rarely in primary ovarian mucinous adenocarcinomas. PAX-8 expression is reported in renal tubules as well as renal cell carcinoma, nephroblastoma, and seminoma. PAX-8 antibody may be used as an additional immunohistochemical marker for renal epithelial tumors.

Overview

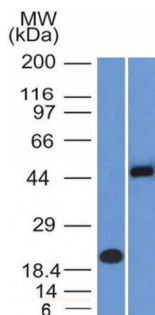
Product Name	Anti-PAX8 (Renal Cell Marker) Monoclonal Antibody
Reactive Species	Dog, Human
Description	Boster Bio Anti-PAX8 (Renal Cell Marker) Monoclonal Antibody (Catalog # M00943). Tested in Flow Cytometry, IF, WB, IHC applications. This antibody reacts with Human, Dog.
Conjugate	Biotin
Application	Flow Cytometry, IF, IHC, WB
Clonality	Monoclonal Clone: PAX8/1492
Formulation	Prepared in 10mM PBS with 0.05% BSA & 0.05% azide. Also available WITHOUT BSA & azide at 1.0mg/ml.
Storage Instructions	Antibody with azide - store at 2 to 8°C. Antibody without azide - store at -20 to -80°C. Antibody is stable for 24 months. Non-hazardous. No MSDS required.
Host	Mouse
Uniprot ID	Q06710

Technical Details

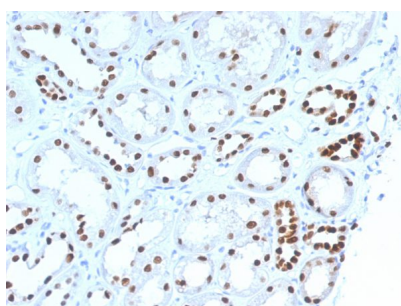
Immunogen	Recombinant fragment (around aa 60-261) of human PAX8 protein (exact sequence is proprietary)
Predicted Reactive Species	Bovine, Canine, Mouse, Orangutan, Pig, Rabbit, Rat, Deer
Cross Reactivity	Does not cross-react with primate, avian or amphibian GR.
Isotype	IgG2b, kappa
Form	Liquid

Concentration	Purified antibody with BSA and azide at 200ug/ml
Purification	200ug/ml of antibody purified from Bioreactor Concentrate by Protein A/G.
Suggested Dilutions	<p>Dilute the sample so that the expected range of concentrations fall within the detection range of this kit.</p> <p>If the expected range of concentration is unknown, a pilot test should be conducted to decide the optimal dilution ratio for your samples.</p> <p>Some PubMed article(s) citing the expression level of this target are as follows:</p> <p>Boster Bio's internal QC testing used:</p> <p>Flow Cytometry (1-2ug/million cells)</p> <p>Immunofluorescence (1-2ug/ml)</p> <p>Western Blot (1-2ug/ml)</p> <p>Immunohistochemistry (Formalin-fixed) (1-2ug/ml for 30 minutes at RT)(Staining of formalin-fixed tissues requires heating tissue sections in 10mM Tris buffer with 1mM EDTA, pH 9.0, for 45 min at 95&degC followed by cooling at RT for 20 minutes)Optimal dilution for a specific application should be determined.</p>

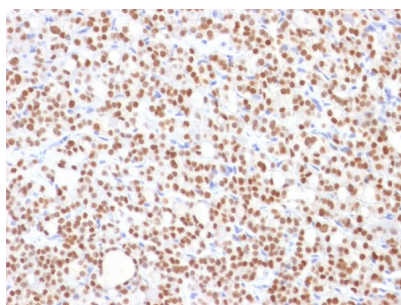
Anti-PAX8 (Renal Cell Marker) Monoclonal Antibody (M00943) Images



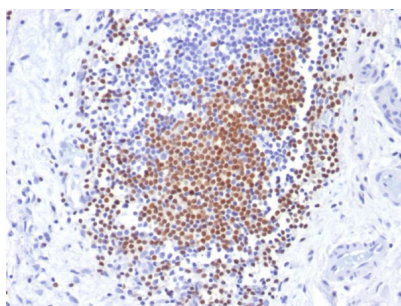
Western Blot Analysis (A) Recombinant Protein (B) Raji cell lysate Using Anti-PAX8 Mouse Monoclonal Antibody (PAX8/1492).



Formalin-fixed, paraffin-embedded human Renal Cell Carcinoma stained with Anti-PAX8 Mouse Monoclonal Antibody (PAX8/1492).



Formalin-fixed, paraffin-embedded human Thyroid Carcinoma stained with Anti-PAX8 Mouse Monoclonal Antibody (PAX8/1492).



Formalin-fixed, paraffin-embedded human Urothelial Carcinoma stained with Anti-PAX8 Mouse Monoclonal Antibody (PAX8/1492).

Submit a product review to Biocompare.com

Submit a review of this product to Biocompare.com to receive a \$20 Amazon.com giftcard! Your reviews help your fellow scientists make the right decisions. Thank you for your contribution.



Anti-PAX8 (Renal Cell Marker) Monoclonal Antibody