

Anti-Topoisomerase II alpha (Proliferation & Drug-Resistance Marker) Monoclonal Antibody

Catalog Number: M00953

About TOP2A

This monoclonal antibody recognizes a 170kDa protein, which is identified as topoisomerase II is also implicated in drug resistance of tumor cells and has been shown to be over-expressed in many human cancers. Decreased expression of Topo IIa is the predominant mechanism of resistance to several chemotherapeutic agents.

Overview

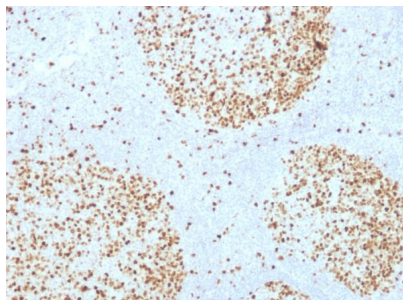
Product Name	Anti-Topoisomerase II alpha (Proliferation & Drug-Resistance Marker) Monoclonal Antibody
Reactive Species	Human, Mouse
Description	Boster Bio Anti-Topoisomerase II alpha (Proliferation & Drug-Resistance Marker) Monoclonal Antibody (Catalog # M00953). Tested in IF, WB, IHC applications. This antibody reacts with Human, Mouse.
Conjugate	Biotin
Application	IF, IHC, WB
Clonality	Monoclonal Clone: TOP2A/1361
Formulation	Prepared in 10mM PBS with 0.05% BSA & 0.05% azide. Also available WITHOUT BSA & azide at 1.0mg/ml.
Storage Instructions	Antibody with azide - store at 2 to 8°C. Antibody without azide - store at -20 to -80°C. Antibody is stable for 24 months. Non-hazardous. No MSDS required.
Host	Mouse
Uniprot ID	P11388

Technical Details

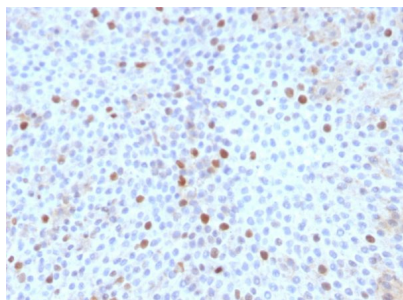
Immunogen	Recombinant human Topoisomerase II alpha fragment (aa1352-1493)
Predicted Reactive Species	Bovine, Canine, Mouse, Orangutan, Pig, Rabbit, Rat, Deer
Cross Reactivity	Does not cross-react with primate, avian or amphibian GR.
Isotype	IgG2b, kappa
Form	Liquid
Concentration	Purified antibody with BSA and azide at 200ug/ml

Purification	200ug/ml of antibody purified from Bioreactor Concentrate by Protein A/G.
Suggested Dilutions	<p>Dilute the sample so that the expected range of concentrations fall within the detection range of this kit.</p> <p>If the expected range of concentration is unknown, a pilot test should be conducted to decide the optimal dilution ratio for your samples.</p> <p>Some PubMed article(s) citing the expression level of this target are as follows:</p> <p>Boster Bio's internal QC testing used:</p> <p>Immunofluorescence (1-2ug/ml)</p> <p>Western Blot (1-2ug/ml)</p> <p>Immunohistochemistry (Formalin-fixed) (1-2ug/ml for 30 min at RT)(Staining of formalin-fixed tissues requires heating tissue sections in 10mM Tris with 1mM EDTA, pH 9.0, for 45 min at 95&degC followed by cooling at RT for 20 minutes)</p> <p>Optimal dilution for a specific application should be determined.</p>

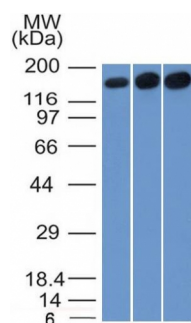
Anti-Topoisomerase II alpha (Proliferation & Drug-Resistance Marker) Monoclonal Antibody (M00953) Images



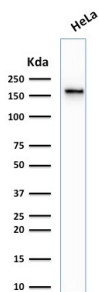
Formalin-fixed, paraffin-embedded human Tonsil stained with Anti- Topoisomerase II alpha Monoclonal Antibody (TOP2A/1361).



Formalin-fixed, paraffin-embedded human Bladder Carcinoma stained with Anti-Topoisomerase II alpha Monoclonal Antibody (TOP2A/1361).

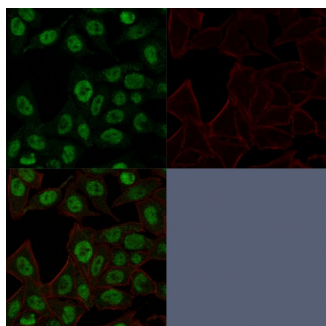


Western Blot of HepG2, HeLa and 3T3 cell lysate using Anti-Topo II alpha, Monoclonal Antibody (TOP2A/1361).



Western Blot analysis of human HeLa cell lysate using Anti-Topoisomerase II alpha, Monoclonal Antibody (TOP2A/1361).

Confocal Immunofluorescence image of HeLa cells using Anti-Topo II alpha, Monoclonal Antibody (TOP2A/1361). Green (CF488) and Phalloidin (Red) are used to label the nuclei.



Submit a product review to Biocompare.com

Submit a review of this product to Biocompare.com to receive a \$20 Amazon.com giftcard! Your reviews help your fellow scientists make the right decisions. Thank you for your contribution.



Anti-Topoisomerase II alpha (Proliferation & Drug-Resistance Marker) Monoclonal Antibody