

Anti-S100-beta Rabbit Monoclonal Antibody, Clone#RM304

Catalog Number: M00979-2

Overview

Product Name	Anti-S100-beta Rabbit Monoclonal Antibody, Clone#RM304
Reactive Species	Human
Description	Boster Bio Anti-S100-beta Rabbit Monoclonal Antibody, Clone#RM304 (Catalog # M00979-2). Tested in IHC, WB applications. This antibody reacts with Human.
Application	IHC, WB
Clonality	Monoclonal RM304
Formulation	50% Glycerol/PBS with 1% BSA and 0.09% sodium azide
Storage Instructions	Store at -20°C for one year. Avoid repeated freeze-thaw cycles.
Host	Rabbit
Uniprot ID	P04271

Technical Details

Immunogen	A peptide corresponding to the C-terminus of human S100-B
Cross Reactivity	This antibody reacts to human S100-B (S-100 protein beta chain). It may also react to mouse or rat S100-B, as predicted by immunogen homology.
Isotype	Rabbit IgG
Form	Liquid
Concentration	0.5-1mg/ml, actual concentration vary by lot. Use suggested dilution ratio to decide dilution procedure.
Purification	Protein A affinity purified from an animal origin-free culture supernatant
Suggested Dilutions	<p>Dilute the sample so that the expected range of concentrations fall within the detection range of this kit.</p> <p>If the expected range of concentration is unknown, a pilot test should be conducted to decide the optimal dilution ratio for your samples.</p> <p>Some PubMed article(s) citing the expression level of this target are as follows:</p> <p>Boster Bio's internal QC testing used:</p> <p>Immunohistochemistry (IHC): 1:500-1:1000 dilution</p> <p>WB: 1:100-1:200 dilution.</p>

Anti-S100-beta Rabbit Monoclonal Antibody, Clone#RM304 (M00979-2) Images

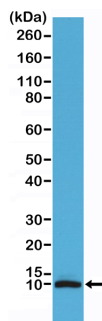


Figure 1. Western Blotting result
Western Blot of human brain tissue lysate using anti-S100B rabbit monoclonal antibody (Clone RM304) at a 1:100 dilution.

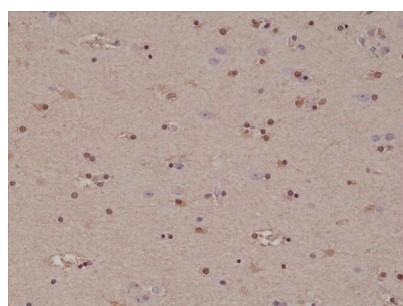


Figure 2. IHC result
Immunohistochemical staining of formalin fixed and paraffin embedded human brain tissue section using anti-S100B rabbit monoclonal antibody (Clone RM304) at a 1:1000 dilution.

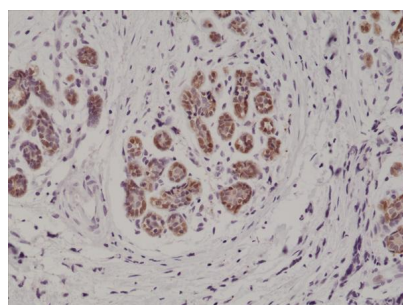


Figure 3. IHC result
Immunohistochemical staining of formalin fixed and paraffin embedded human breast cancer tissue section using anti-S100B rabbit monoclonal antibody (Clone RM304) at a 1:1000 dilution.

5 Publications Citing This Product

1. PubMed ID: 25538758, Xue B, Sun L, Li X, Wang X, Zhang Y, Mu Y, Liang L. Neural Regen Res. 2012 Oct 25;7(30):2340-6. Doi: 10.3969/J.Issn.1673-5374.2012.30.003. Ginsenoside Rb1 Relieves Glucose Fluctuation-Induced Oxidative Stress And Apoptosis In Schwann Cells.
2. PubMed ID: 25368634, Wu Y, Xue B, Li X, Liu H. Neural Regen Res. 2012 Nov 25;7(33):2583-91. Doi: 10.3969/J.Issn.1673-5374.2012.33.003. Puerarin Prevents High Glucose-Induced Apoptosis Of Schwann Cells By Inhibiting Oxidative Stress.
3. PubMed ID: 25206506, Zhao F, He W, Zhang Y, Tian D, Zhao H, Yu K, Bai J. Neural Regen Res. 2013 Jul 25;8(21):1974-84. Doi: 10.3969/J.Issn.1673-5374.2013.21.006. Electric Stimulation And Decimeter Wave Therapy Improve The Recovery Of Injured Sciatic Nerves.

Visit bosterbio.com/anti-s100-beta-rabbit-monoclonal-antibody-clone-rm304-m00979-2-boster.html to see all 5 publications.

Submit a product review to Biocompare.com

Submit a review of this product to Biocompare.com to receive a \$20 Amazon.com giftcard! Your



reviews help your fellow scientists make the right decisions. Thank you for your contribution.

Anti-S100-beta Rabbit Monoclonal Antibody, Clone#RM304