

Anti-AMPK alpha-1 (AMPKA1) (5'-AMP-activated protein kinase catalytic subunit alpha-1) PRKAA1 Rabbit Monoclonal Antibody, Clone#RM301

Catalog Number: M00994-1

Overview

Product Name	Anti-AMPK alpha-1 (AMPKA1) (5'-AMP-activated protein kinase catalytic subunit alpha-1) PRKAA1 Rabbit Monoclonal Antibody, Clone#RM301
Reactive Species	Human
Description	Boster Bio Anti-AMPK alpha-1 (AMPKA1) (5'-AMP-activated protein kinase catalytic subunit alpha-1) PRKAA1 Rabbit Monoclonal Antibody, Clone#RM301 (Catalog # M00994-1). Tested in IHC, WB applications. This antibody reacts with Human.
Application	IHC, WB
Clonality	Monoclonal RM301
Formulation	50% Glycerol/PBS with 1% BSA and 0.09% sodium azide
Storage Instructions	Store at -20°C for one year. Avoid repeated freeze-thaw cycles.
Host	Rabbit
Uniprot ID	Q13131

Technical Details

Immunogen	A peptide corresponding to the residues near the C-terminus of human AMPK alpha-1.
Cross Reactivity	This antibody reacts to human AMPK alpha-1 (AMPKA1) (5'-AMP-activated protein kinase catalytic subunit alpha-1).
Isotype	Rabbit IgG
Form	Liquid
Concentration	0.5-1mg/ml, actual concentration vary by lot. Use suggested dilution ratio to decide dilution procedure.
Purification	Protein A affinity purified from an animal origin-free culture supernatant
Suggested Dilutions	Dilute the sample so that the expected range of concentrations fall within the detection range of this kit. If the expected range of concentration is unknown, a pilot test should be conducted to decide the optimal dilution ratio for your samples. Some PubMed article(s) citing the expression level of this target are as follows: Boster Bio's internal QC testing used: Immunohistochemistry (IHC): 1:100-1:200 dilution WB: 1:100-1:200 dilution.

Anti-AMPK alpha-1 (AMPKA1) (5'-AMP-activated protein kinase catalytic subunit alpha-1) PRKAA1 Rabbit Monoclonal Antibody, Clone#RM301 (M00994-1) Images

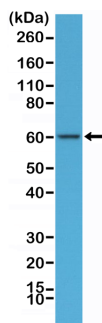


Figure 1. Western Blotting result
Western Blot of HeLa cells lysate using anti-AMPK alpha-1 rabbit monoclonal antibody (clone RM301) at a 1:100 dilution.

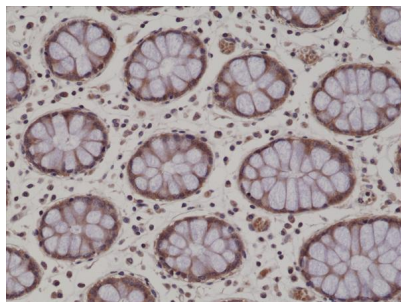


Figure 2. IHC result
Immunohistochemical staining of formalin fixed and paraffin embedded human colon tissue section using anti-AMPK alpha-1 rabbit monoclonal antibody (clone RM301) at a 1:200 dilution.

Submit a product review to Biocompare.com

Submit a review of this product to Biocompare.com to receive a \$20 Amazon.com giftcard! Your reviews help your fellow scientists make the right decisions. Thank you for your contribution.



Anti-AMPK alpha-1 (AMPKA1) (5'-AMP-activated protein kinase catalytic subunit alpha-1) PRKAA1 Rabbit Monoclonal Antibody, Clone#RM301