

Anti-Hsc70 HSPA8 Rabbit Monoclonal Antibody

Catalog Number: M01024

About HSPA8

Activated by icilin, eucalyptol, menthol, cold and modulation of intracellular pH. Involved in menthol sensation. Permeable for monovalent cations sodium, potassium, and cesium and divalent cation calcium.

Overview

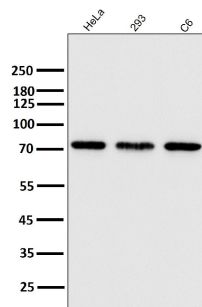
Product Name	Anti-Hsc70 HSPA8 Rabbit Monoclonal Antibody
Reactive Species	Human, Mouse, Rat
Description	Boster Bio Anti-Hsc70 HSPA8 Rabbit Monoclonal Antibody catalog # M01024. Tested in WB, IHC, ICC/IF, IP, Flow Cytometry applications. This antibody reacts with Human, Mouse, Rat.
Application	Flow Cytometry, IP, IF, IHC, ICC, WB
Clonality	Monoclonal DBB-8
Formulation	Rabbit IgG in phosphate buffered saline, pH 7.4, 150mM NaCl, 0.02% sodium azide and 50% glycerol, 0.4-0.5mg/ml BSA.
Storage Instructions	Store at -20°C for one year. For short term storage and frequent use, store at 4°C for up to one month. Avoid repeated freeze-thaw cycles.
Host	Rabbit
Uniprot ID	P11142

Technical Details

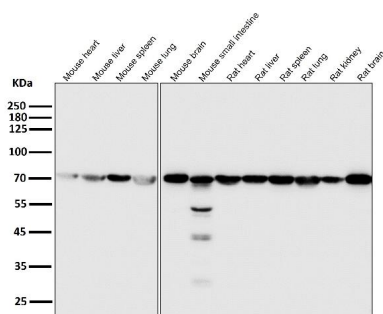
Immunogen	A synthesized peptide derived from human Hsc70
Isotype	Rabbit IgG
Form	Liquid
Concentration	Actual concentration vary by lot. Use suggested dilution ratio to decide dilution procedure.
Purification	Affinity-chromatography
Suggested Dilutions	Dilute the sample so that the expected range of concentrations fall within the detection range of this kit. If the expected range of concentration is unknown, a pilot test should be conducted to decide the optimal dilution ratio for your samples. Some PubMed article(s) citing the expression level of this target are as follows: Boster Bio's internal QC testing used: WB 1:500-1:2000

	IHC 1:50-1:200 ICC/IF 1:50-1:200 IP 1:20 FC 1:30
--	---

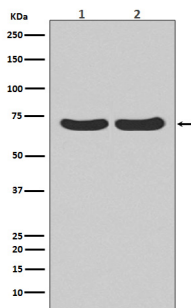
Anti-Hsc70 HSPA8 Rabbit Monoclonal Antibody (M01024) Images



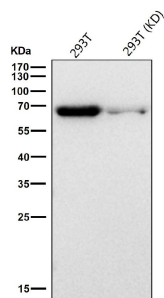
All lanes use the Antibody at 1:3K dilution for 1 hour at room temperature.



All lanes use the Antibody at 1:3K dilution for 1 hour at room temperature.

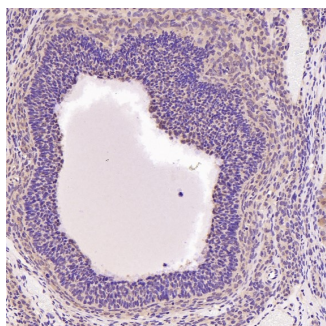


Western blot analysis of Calreticulin expression in (1) HeLa cell lysate; (2) C6 cell lysate.

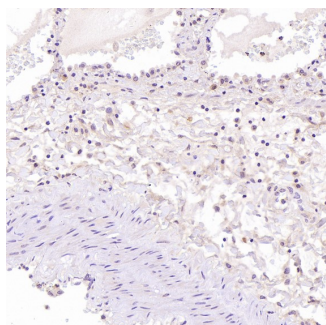


All lanes use the Antibody at 1:2K dilution for 1 hour at room temperature.

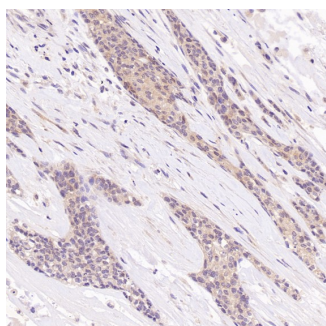
Immunohistochemical analysis of paraffin-embedded Rat ovary, using the Antibody at 1:200 dilution.



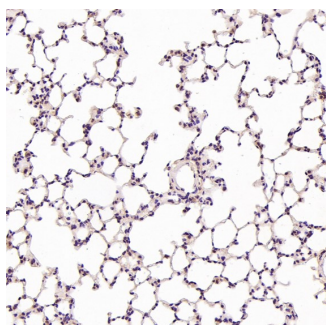
Immunohistochemical analysis of paraffin-embedded Human liver cancer, using the Antibody at 1:500 dilution.



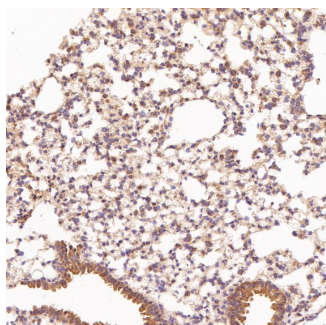
Immunohistochemical analysis of paraffin-embedded Human breast cancer, using the Antibody at 1:500 dilution.

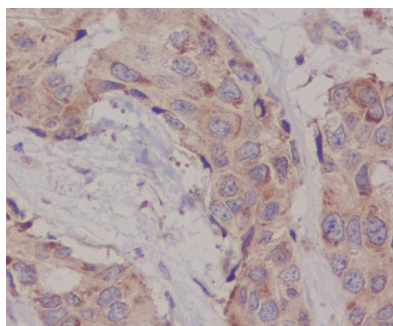


Immunohistochemical analysis of paraffin-embedded Rat liver, using the Antibody at 1:200 dilution.

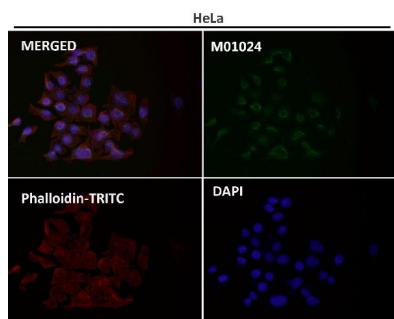


Immunohistochemical analysis of paraffin-embedded Mouse lung, using the Antibody at 1:200 dilution.

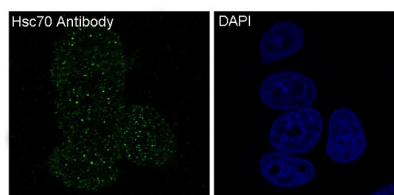




Immunohistochemical analysis of paraffin-embedded human breast cancer, using Hsc70 Antibody.



Immunofluorescent analysis using the Antibody at 1:50 dilution.



Immunofluorescent analysis of MCF7 cells, using Hsc70 Antibody .

Submit a product review to Biocompare.com

Submit a review of this product to Biocompare.com to receive a \$20 Amazon.com giftcard! Your reviews help your fellow scientists make the right decisions. Thank you for your contribution.



Anti-Hsc70 HSPA8 Rabbit Monoclonal Antibody