

Anti-CD209 / DC-SIGN (Pathogen Receptor on Dendritic Cells) Monoclonal Antibody

Catalog Number: M01025

About CD209

DC-SIGN is a transmembrane receptor that is expressed on the surface of dendritic cells and macrophages. It is involved in the innate immune system and recognizes numerous evolutionarily divergent pathogens ranging from parasites to viruses. The protein is organized into three distinct domains: an N-terminal transmembrane domain, a tandem-repeat neck domain and C-type lectin carbohydrate recognition domain. The extracellular region consisting of the C-type lectin and neck domains has a dual function as a pathogen recognition receptor and a cell adhesion receptor by binding carbohydrate ligands on the surface of microbes and endogenous cells. The neck region is important for homo-oligomerization, which allows the receptor to bind multivalent ligands with high avidity.

Overview

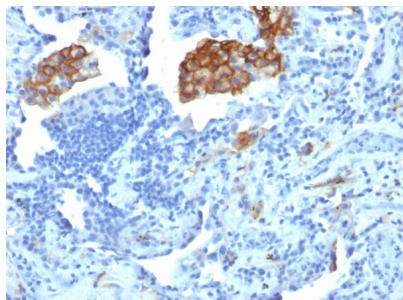
Product Name	Anti-CD209 / DC-SIGN (Pathogen Receptor on Dendritic Cells) Monoclonal Antibody
Reactive Species	Human
Description	Boster Bio Anti-CD209 / DC-SIGN (Pathogen Receptor on Dendritic Cells) Monoclonal Antibody (Catalog # M01025). Tested in Flow Cytometry, IF, WB, IHC applications. This antibody reacts with Human.
Conjugate	Biotin
Application	Flow Cytometry, IF, IHC, WB
Clonality	Monoclonal Clone: C209/1781
Formulation	Prepared in 10mM PBS with 0.05% BSA & 0.05% azide. Also available WITHOUT BSA & azide at 1.0mg/ml.
Storage Instructions	Antibody with azide - store at 2 to 8°C. Antibody without azide - store at -20 to -80°C. Antibody is stable for 24 months. Non-hazardous. No MSDS required.
Host	Mouse
Uniprot ID	Q9NNX6

Technical Details

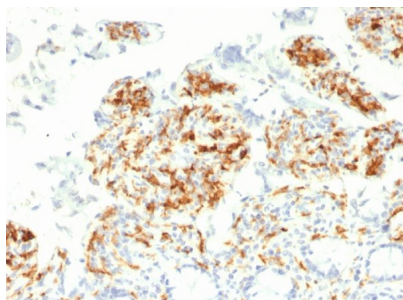
Immunogen	Recombinant human CD209 protein fragment (exact sequence is proprietary)
Predicted Reactive Species	Bovine, Canine, Mouse, Orangutan, Pig, Rabbit, Rat, Deer
Cross Reactivity	Does not cross-react with primate, avian or amphibian GR.
Isotype	IgG2b, kappa

Form	Liquid
Concentration	Purified antibody with BSA and azide at 200ug/ml
Purification	200ug/ml of antibody purified from Bioreactor Concentrate by Protein A/G.
Suggested Dilutions	<p>Dilute the sample so that the expected range of concentrations fall within the detection range of this kit.</p> <p>If the expected range of concentration is unknown, a pilot test should be conducted to decide the optimal dilution ratio for your samples.</p> <p>Some PubMed article(s) citing the expression level of this target are as follows:</p> <p>Boster Bio's internal QC testing used:</p> <p>Flow Cytometry (0.5-1ug/million cells)</p> <p>Immunofluorescence (1-2ug/ml)</p> <p>Western Blotting (0.5-1ug/ml)</p> <p>Immunohistochemistry (Formalin-fixed) (0.5-1ug/ml for 30 minutes at RT) (Staining of formalin-fixed tissues is enhanced by boiling tissue sections in 10mM Tris with 1mM EDTA Buffer, pH 9.0, for 10-20 min followed by cooling at RT for 20 minutes)</p> <p>Optimal dilution for a specific application should be determined.</p>

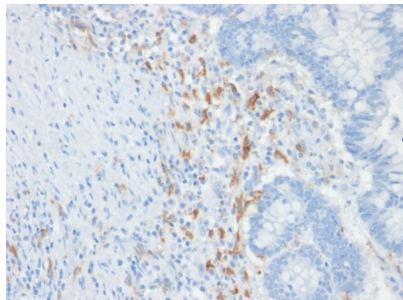
Anti-CD209 / DC-SIGN (Pathogen Receptor on Dendritic Cells) Monoclonal Antibody (M01025) Images



Formalin-fixed, paraffin-embedded human Lung Carcinoma stained with Anti-CD209 Mouse Monoclonal Antibody (C209/1781).



Formalin-fixed, paraffin-embedded human Small Intestine stained with Anti-CD209 Mouse Monoclonal Antibody (C209/1781).



Formalin-fixed, paraffin-embedded human Colon Carcinoma stained with Anti-CD209 Mouse Monoclonal Antibody (C209/1781).

Submit a product review to Biocompare.com

Submit a review of this product to Biocompare.com to receive a \$20 Amazon.com giftcard! Your reviews help your fellow scientists make the right decisions. Thank you for your contribution.



Anti-CD209 / DC-SIGN (Pathogen Receptor on Dendritic Cells) Monoclonal Antibody