

Anti-PMS2 Monoclonal Antibody

Catalog Number: M01028

About PMS2

PMS2 is a highly conserved nuclear protein involved in mismatch repair during DNA replication and has been identified to be composed as a heterodimer of PMS2 and MLH1. PMS is part of the BRCA1-associated genome surveillance complex (BASC), which contains BRCA1, MSH2, MSH6, MLH1, ATM, BLM, PMS2 and the RAD50-MRE11-NBS1 protein complex. This association could be a dynamic process changing throughout the cell cycle and within subnuclear domains. Defects in PMS2 are the cause of hereditary non-polyposis colorectal cancer type 4 (HNPCC4), Turcot syndrome (an autosomal dominant disorder characterized by malignant tumors of the brain associated with multiple colorectal adenomas) and supratentorial primitive neuroectodermal tumors with cafe-au-lait spots (SNTCL). The human PMS2 gene encodes an 862 aa, 96 kDa polypeptide.

Overview

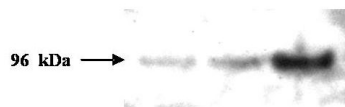
Product Name	Anti-PMS2 Monoclonal Antibody
Reactive Species	Human
Description	Boster Bio Anti-PMS2 Monoclonal Antibody (Catalog # M01028). Tested in ELISA, WB applications. This antibody reacts with Human.
Application	ELISA, WB
Clonality	Monoclonal Clone: 1204
Formulation	0.02 M Potassium Phosphate, 0.15 M Sodium Chloride, pH 7.2, 0.01% (w/v) Sodium Azide
Storage Instructions	Store vial at -20°C prior to opening. Aliquot contents and freeze at -20°C or below for extended storage. Avoid cycles of freezing and thawing. Centrifuge product if not completely clear after standing at room temperature. This product is stable for several weeks at 4°C as an undiluted liquid. Dilute only prior to immediate use. Expiration date is one (1) year from date of opening. (Ship on dry ice.)
Host	Mouse
Uniprot ID	P54278

Technical Details

Immunogen	This protein A purified monoclonal antibody was produced by repeated immunizations with recombinant human PMS2 corresponding to the first 133 amino acid residues of the protein. The clone was produced using conventional hybridoma technology.
Predicted Reactive Species	Chimpanzee, Hamster
Cross Reactivity	No cross reactivity with other proteins.
Isotype	IgG1 kappa

Form	Liquid (sterile filtered)
Concentration	1.0 mg/mL by UV absorbance at 280 nm
Purification	This is an protein A purified antibody from ascites fluid directed against PMS2-134 and reacts with full length version of PMS2 in human and hamster tissues. The epitope was putatively mapped to amino acids 58-81 of human PMS2. BLAST analysis indicates that this sequence is 100% identical for human, mouse, rat and chimpanzee. No specific information is available for reactivity with PMS2 protein from other sources.
Suggested Dilutions	<p>Dilute the sample so that the expected range of concentrations fall within the detection range of this kit.</p> <p>If the expected range of concentration is unknown, a pilot test should be conducted to decide the optimal dilution ratio for your samples.</p> <p>Some PubMed article(s) citing the expression level of this target are as follows:</p> <p>Boster Bio's internal QC testing used:</p> <p>ELISA: 1:5,000 - 1:20,000</p> <p>WB: 1:500 - 1:2,000</p>

Anti-PMS2 Monoclonal Antibody (M01028) Images



Western blot analysis of PMS2 expression in H157 cell lysates 5ug(lane 1), H157 cell lysates 10ug (lane 2) and H157 cell lysates 30ug (lane 3). PMS2 at 96KD was detected using mouse anti-PMS2 Protein A purified monoclonal antibody (Catalog # M01028) at 1:1000. A 1:20,000 dilution of HRP conjugated Gt-anti-Mouse IgG preceded color development using Pierce Chemical's SuperSignal substrate. Personal communication Morphotek Inc.

Submit a product review to Biocompare.com

Submit a review of this product to Biocompare.com to receive a \$20 Amazon.com giftcard! Your reviews help your fellow scientists make the right decisions. Thank you for your contribution.



Anti-PMS2 Monoclonal Antibody