

## Anti-STAT5a Rabbit Monoclonal Antibody

Catalog Number: M01087-1

### About STAT5A

Activated by icilin, eucalyptol, menthol, cold and modulation of intracellular pH. Involved in menthol sensation. Permeable for monovalent cations sodium, potassium, and cesium and divalent cation calcium.

### Overview

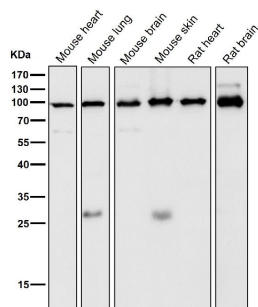
Product Name	Anti-STAT5a Rabbit Monoclonal Antibody
Reactive Species	Human, Mouse, Rat
Description	Boster Bio Anti-STAT5a Rabbit Monoclonal Antibody catalog # M01087-1. Tested in WB, IHC, ICC/IF, IP, Flow Cytometry applications. This antibody reacts with Human, Mouse, Rat.
Application	Flow Cytometry, IP, IF, IHC, ICC, WB
Clonality	Monoclonal AOI-19
Formulation	Rabbit IgG in phosphate buffered saline, pH 7.4, 150mM NaCl, 0.02% sodium azide and 50% glycerol, 0.4-0.5mg/ml BSA.
Storage Instructions	Store at -20°C for one year. For short term storage and frequent use, store at 4°C for up to one month. Avoid repeated freeze-thaw cycles.
Host	Rabbit
Uniprot ID	P42229

### Technical Details

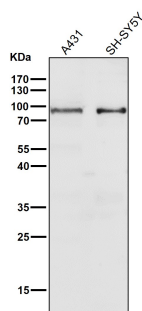
Immunogen	A synthesized peptide derived from human STAT5a
Isotype	Rabbit IgG
Form	Liquid
Concentration	Actual concentration vary by lot. Use suggested dilution ratio to decide dilution procedure.
Purification	Affinity-chromatography
Suggested Dilutions	<p>Dilute the sample so that the expected range of concentrations fall within the detection range of this kit.</p> <p>If the expected range of concentration is unknown, a pilot test should be conducted to decide the optimal dilution ratio for your samples.</p> <p>Some PubMed article(s) citing the expression level of this target are as follows:</p> <p>Boster Bio's internal QC testing used:</p> <p>WB 1:500-1:2000</p>

	IHC 1:50-1:200 ICC/IF 1:50-1:200 IP 1:50 FC 1:50
--	---

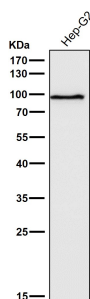
## Anti-STAT5a Rabbit Monoclonal Antibody (M01087-1) Images



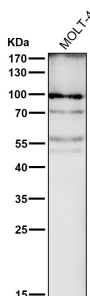
All lanes use the Antibody at 1:3K dilution for 1 hour at room temperature.



All lanes use the Antibody at 1:3K dilution for 1 hour at room temperature.

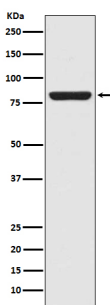
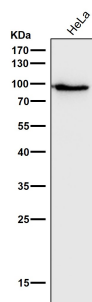


All lanes use the Antibody at 1:3K dilution for 1 hour at room temperature.



All lanes use the Antibody at 1:3K dilution for 1 hour at room temperature.

All lanes use the Antibody at 1:3K dilution for 1 hour at room temperature.



Western blot analysis of STAT5a in A431 cell lysate.

## 1 Publications Citing This Product

1. PubMed ID: 23693134, Hu T, Zhang C, Tang Q, Su Y, Li B, Chen L, Zhang Z, Cai T, Zhu Y. BMC Cancer. 2013 May 22;13:251. Doi: 10.1186/1471-2407-13-251. Variant G6Pd Levels Promote Tumor Cell Proliferation Or Apoptosis Via The Stat3/5 Pathway In The Human Melanoma Xenogr...

Visit [bosterbio.com/anti-stat5a-rabbit-monoclonal-antibody-m01087-1-boster.html](http://bosterbio.com/anti-stat5a-rabbit-monoclonal-antibody-m01087-1-boster.html) to see all 1 publications.

## Submit a product review to Biocompare.com

Submit a review of this product to Biocompare.com to receive a \$20 Amazon.com giftcard! Your reviews help your fellow scientists make the right decisions. Thank you for your contribution.



Anti-STAT5a Rabbit Monoclonal Antibody