

Anti-ARG1/Arginase 1 Rabbit Monoclonal Antibody

Catalog Number: M01106-1

About ARG1

Activated by icilin, eucalyptol, menthol, cold and modulation of intracellular pH. Involved in menthol sensation. Permeable for monovalent cations sodium, potassium, and cesium and divalent cation calcium.

Overview

Product Name	Anti-ARG1/Arginase 1 Rabbit Monoclonal Antibody
Reactive Species	Human, Mouse, Rat
Description	Boster Bio Anti-ARG1/Arginase 1 Rabbit Monoclonal Antibody catalog # M01106-1. Tested in WB, IP applications. This antibody reacts with Human, Mouse, Rat.
Application	IP, WB
Clonality	Monoclonal ADG-1
Formulation	Rabbit IgG in phosphate buffered saline, pH 7.4, 150mM NaCl, 0.02% sodium azide and 50% glycerol, 0.4-0.5mg/ml BSA.
Storage Instructions	Store at -20°C for one year. For short term storage and frequent use, store at 4°C for up to one month. Avoid repeated freeze-thaw cycles.
Host	Rabbit
Uniprot ID	P05089

Technical Details

Immunogen	A synthesized peptide derived from human ARG1
Isotype	Rabbit IgG
Form	Liquid
Concentration	Actual concentration vary by lot. Use suggested dilution ratio to decide dilution procedure.
Purification	Affinity-chromatography
Suggested Dilutions	Dilute the sample so that the expected range of concentrations fall within the detection range of this kit. If the expected range of concentration is unknown, a pilot test should be conducted to decide the optimal dilution ratio for your samples. Some PubMed article(s) citing the expression level of this target are as follows: Boster Bio's internal QC testing used: WB 1:500-1:2000

IP 1:50

Anti-ARG1/Arginase 1 Rabbit Monoclonal Antibody (M01106-1) Images

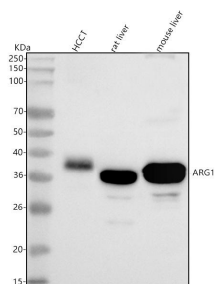


Figure 1. Western blot analysis of ARG1 using anti-ARG1 antibody (M01106-1).

Electrophoresis was performed on a 5-20% SDS-PAGE gel at 70V (Stacking gel) / 90V (Resolving gel) for 2-3 hours. The sample well of each lane was loaded with 30 ug of sample under reducing conditions.

Lane 1: human hepatocellular carcinoma tumor tissue (HCCT) lysates,

Lane 2: rat liver tissue lysates,

Lane 3: mouse liver tissue lysates.

After electrophoresis, proteins were transferred to a nitrocellulose membrane at 150 mA for 50-90 minutes. Blocked the membrane with 5% non-fat milk/TBS for 1.5 hour at RT. The membrane was incubated with rabbit anti-ARG1 antigen affinity purified monoclonal antibody (Catalog # M01106-1) at 1:500 overnight at 4°C, then washed with TBS-0.1%Tween 3 times with 5 minutes each and probed with a goat anti-rabbit IgG-HRP secondary antibody at a dilution of 1:1000 for 1.5 hour at RT. The signal is developed using an Enhanced Chemiluminescent detection (ECL) kit (Catalog # EK1002) with Tanon 5200 system. A specific band was detected for ARG1 at approximately 36, 38 kDa. The expected band size for ARG1 is at 35 kDa.

3 Publications Citing This Product

1. PubMed ID: 32908940, Liao H, Li Y, Zhang X, Zhao X, Zheng D, Shen D, Li R. Protective Effects of Thalidomide on High-Glucose-Induced Podocyte Injury through In Vitro Modulation of Macrophage M1/M2 Differentiation. J Immunol Res. 2020 Aug 27; 2020:8263598. doi:10.1155/2020/8263598. PMID
2. PubMed ID: 28615349, CFTR protects against vascular inflammation and atherogenesis in apolipoprotein E-deficient mice
3. PubMed ID: 30151392, Panax notoginseng Saponins Regulate Macrophage Polarization under Hyperglycemic Condition via NF- κ B Signaling Pathway

Visit bosterbio.com/anti-arg1-rabbit-monoclonal-antibody-m01106-1-boster.html to see all 3 publications.

Submit a product review to Biocompare.com

Submit a review of this product to Biocompare.com to receive a \$20 Amazon.com giftcard! Your reviews help your fellow scientists make the right decisions. Thank you for your contribution.



Anti-ARG1/Arginase 1 Rabbit Monoclonal Antibody