

Anti-Podoplanin (PDPN) (Lymphatic Endothelial & Mesothelial Marker) Monoclonal Antibody

Catalog Number: M01124

About PDPN

This monoclonal antibody recognizes a muco-protein of 38-43kDa, which is identified as Podoplanin (PDPN). It localizes in stromal cells of peripheral lymphoid tissue and thymic epithelial cells. As a regulator of the lymphatic endothelium, podoplanin probably plays a role in maintaining the unique shape of podocytes. It is selectively expressed in lymphatic endotheliumas well as lymphoangiomas,Kaposi sarcomas,and in a subset of angiosarcomas with probable lymphatic differentiation. Recent studies have also shown podoplanin to be a highly sensitive and relatively specific marker for epithelioid mesothelioma. Therefore, it can be used in a panel to distinguish mesotheliomas or mesothelial cells from pulmonary carcinomas.

Overview

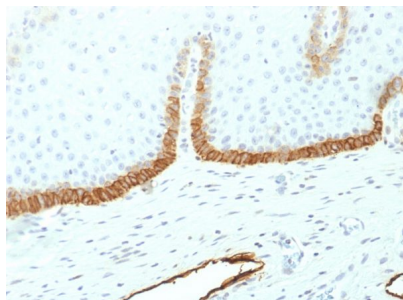
Product Name	Anti-Podoplanin (PDPN) (Lymphatic Endothelial & Mesothelial Marker) Monoclonal Antibody
Reactive Species	Human
Description	Boster Bio Anti-Podoplanin (PDPN) (Lymphatic Endothelial & Mesothelial Marker) Monoclonal Antibody (Catalog # M01124). Tested in ELISA, IF, IHC applications. This antibody reacts with Human.
Conjugate	Biotin
Application	ELISA, IF, IHC
Clonality	Monoclonal Clone: PDPN/1433
Formulation	Prepared in 10mM PBS with 0.05% BSA & 0.05% azide. Also available WITHOUT BSA & azide at 1.0mg/ml.
Storage Instructions	Antibody with azide - store at 2 to 8°C. Antibody without azide - store at -20 to -80°C. Antibody is stable for 24 months. Non-hazardous. No MSDS required.
Host	Mouse
Uniprot ID	Q86YL7

Technical Details

Immunogen	Recombinant human Podoplanin (PDPN) protein fragment (around aa 24-126) (exact sequence is proprietary)
Predicted Reactive Species	Bovine, Canine, Mouse, Orangutan, Pig, Rabbit, Rat, Deer
Cross Reactivity	Does not cross-react with primate, avian or amphibian GR.
Isotype	IgG1, kappa

Form	Liquid
Concentration	Purified antibody with BSA and azide at 200ug/ml
Purification	200ug/ml of antibody purified from Bioreactor Concentrate by Protein A/G.
Suggested Dilutions	<p>Dilute the sample so that the expected range of concentrations fall within the detection range of this kit.</p> <p>If the expected range of concentration is unknown, a pilot test should be conducted to decide the optimal dilution ratio for your samples.</p> <p>Some PubMed article(s) citing the expression level of this target are as follows:</p> <p>Boster Bio's internal QC testing used:</p> <p>ELISA (For coating, order antibody without BSA)</p> <p>Immunofluorescence (1-2ug/ml)</p> <p>Immunohistochemistry (Formalin-fixed) (1-2ug/ml for 30 minutes at RT) (Staining of formalin-fixed tissues requires heating tissue sections in 10mM Tris with 1mM EDTA, pH 9.0, for 45 min at 95&degC followed by cooling at RT for 20 minutes)</p> <p>Optimal dilution for a specific application should be determined.</p>

Anti-Podoplanin (PDPN) (Lymphatic Endothelial & Mesothelial Marker) Monoclonal Antibody (M01124) Images



Formalin-fixed, paraffin-embedded human Cervix stained with Anti-Podoplanin-Monospecific Mouse Monoclonal Antibody (PDPN/1433)

Submit a product review to Biocompare.com

Submit a review of this product to Biocompare.com to receive a \$20 Amazon.com giftcard! Your reviews help your fellow scientists make the right decisions. Thank you for your contribution.



Anti-Podoplanin (PDPN) (Lymphatic Endothelial & Mesothelial Marker) Monoclonal Antibody