

## Anti-CRM1 Rabbit Monoclonal Antibody

Catalog Number: M01180-1

### About XPO1

Activated by icilin, eucalyptol, menthol, cold and modulation of intracellular pH. Involved in menthol sensation. Permeable for monovalent cations sodium, potassium, and cesium and divalent cation calcium.

### Overview

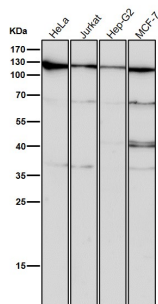
Product Name	Anti-CRM1 Rabbit Monoclonal Antibody
Reactive Species	Human, Mouse, Rat
Description	Boster Bio Anti-CRM1 Rabbit Monoclonal Antibody catalog # M01180-1. Tested in WB, IHC, ICC/IF, Flow Cytometry applications. This antibody reacts with Human, Mouse, Rat.
Application	Flow Cytometry, IF, IHC, ICC, WB
Clonality	Monoclonal AEFD-24
Formulation	Rabbit IgG in phosphate buffered saline, pH 7.4, 150mM NaCl, 0.02% sodium azide and 50% glycerol, 0.4-0.5mg/ml BSA.
Storage Instructions	Store at -20°C for one year. For short term storage and frequent use, store at 4°C for up to one month. Avoid repeated freeze-thaw cycles.
Host	Rabbit
Uniprot ID	O14980

### Technical Details

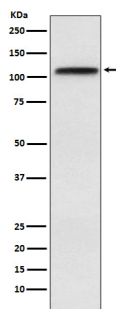
Immunogen	A synthesized peptide derived from human CRM1 Mediates the nuclear export of cellular proteins (cargos) bearing a leucine-rich nuclear export signal (NES) and of RNAs. In the nucleus, in association with RANBP3, binds cooperatively to the NES on its target protein and to the GTPase RAN in its active GTP-bound form (Ran-GTP) . Docking of this complex to the nuclear pore complex (NPC) is mediated through binding to nucleoporins.
Isotype	Rabbit IgG
Form	Liquid
Concentration	Actual concentration vary by lot. Use suggested dilution ratio to decide dilution procedure.
Purification	Affinity-chromatography
Suggested Dilutions	Dilute the sample so that the expected range of concentrations fall within the detection range of this kit. If the expected range of concentration is unknown, a pilot test should be conducted to decide the

optimal dilution ratio for your samples.  
Some PubMed article(s) citing the expression level of this target are as follows:  
Boster Bio's internal QC testing used:  
WB 1:500-1:2000  
IHC 1:50-1:200  
ICC/IF 1:50-1:200  
FC 1:100

## Anti-CRM1 Rabbit Monoclonal Antibody (M01180-1) Images



All lanes use the Antibody at 1:1W dilution for 1 hour at room temperature.



Western blot analysis of CRM1 expression in HeLa cell lysate.

### Submit a product review to Biocompare.com

Submit a review of this product to Biocompare.com to receive a \$20 Amazon.com giftcard! Your reviews help your fellow scientists make the right decisions. Thank you for your contribution.



Anti-CRM1 Rabbit Monoclonal Antibody