

Anti-PIM1 Rabbit Monoclonal Antibody

Catalog Number: M01184

About PIM1

Activated by icilin, eucalyptol, menthol, cold and modulation of intracellular pH. Involved in menthol sensation. Permeable for monovalent cations sodium, potassium, and cesium and divalent cation calcium.

Overview

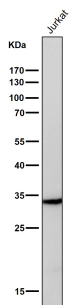
Product Name	Anti-PIM1 Rabbit Monoclonal Antibody
Reactive Species	Human, Mouse
Description	Boster Bio Anti-PIM1 Rabbit Monoclonal Antibody catalog # M01184. Tested in WB, IHC, ICC/IF applications. This antibody reacts with Human, Mouse.
Application	IF, IHC, ICC, WB
Clonality	Monoclonal ECB-16
Formulation	Rabbit IgG in phosphate buffered saline, pH 7.4, 150mM NaCl, 0.02% sodium azide and 50% glycerol, 0.4-0.5mg/ml BSA.
Storage Instructions	Store at -20°C for one year. For short term storage and frequent use, store at 4°C for up to one month. Avoid repeated freeze-thaw cycles.
Host	Rabbit
Uniprot ID	P11309

Technical Details

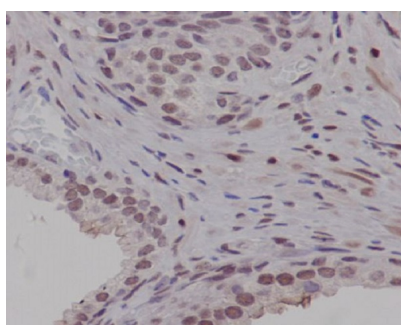
Immunogen	A synthesized peptide derived from human PIM1
Isotype	Rabbit IgG
Form	Liquid
Concentration	Actual concentration vary by lot. Use suggested dilution ratio to decide dilution procedure.
Purification	Affinity-chromatography
Suggested Dilutions	Dilute the sample so that the expected range of concentrations fall within the detection range of this kit. If the expected range of concentration is unknown, a pilot test should be conducted to decide the optimal dilution ratio for your samples. Some PubMed article(s) citing the expression level of this target are as follows: Boster Bio's internal QC testing used: WB 1:5000-1:10000

	IHC 1:50-1:200 ICC/IF 1:50-1:200
--	-------------------------------------

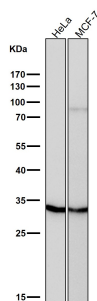
Anti-PIM1 Rabbit Monoclonal Antibody (M01184) Images



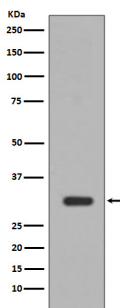
All lanes use the Antibody at 1:3K dilution for 1 hour at room temperature.



Immunohistochemical analysis of paraffin-embedded human prostate carcinoma, using PIM1 Antibody .



All lanes use the Antibody at 1:3K dilution for 1 hour at room temperature.



Western blot analysis of PIM1 expression in Jurkat cell lysate.

1 Publications Citing This Product

1. PubMed ID: 27274285, PIM1 polymorphism and PIM1 expression as predisposing factors of esophageal squamous cell carcinoma in the Asian population

Visit bosterbio.com/anti-pim1-rabbit-monoclonal-antibody-m01184-boster.html to see all 1 publications.

Submit a product review to Biocompare.com

Submit a review of this product to Biocompare.com to receive a \$20 Amazon.com giftcard! Your reviews help your fellow scientists make the right decisions. Thank you for your contribution.



Anti-PIM1 Rabbit Monoclonal Antibody