

Anti-HLA-DRA (MHC II) Monoclonal Antibody

Catalog Number: M01195-1

About HLA-DRA

This monoclonal antibody reacts with the HLA-DR antigen, a member of MHC class II molecules. It does not cross react with HLA-DP and HLA-DQ. HLA-DR is a heterodimeric cell surface glycoprotein comprised of a 36kDa alpha (heavy) chain and a 28kDa beta (light) chain. It is expressed on B-cells, activated T-cells, monocytes/macrophages, dendritic cells and other non-professional APCs. In conjunction with the CD3/TCR complex and CD4 molecules, HLA-DR is critical for efficient peptide presentation to CD4+ T cells. It is an excellent histiocytic marker in paraffin sections producing intense cytoplasmic staining. True histiocytic neoplasms are similarly positive. HLA-DR antigens also occur on a variety of epithelial cells and their corresponding neoplastic counterparts.

Overview

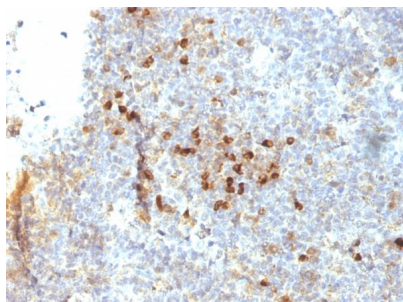
Product Name	Anti-HLA-DRA (MHC II) Monoclonal Antibody
Reactive Species	Human
Description	Boster Bio Anti-HLA-DRA (MHC II) Monoclonal Antibody (Catalog # M01195-1). Tested in Flow Cytometry, IF, IHC applications. This antibody reacts with Human.
Conjugate	Biotin
Application	Flow Cytometry, IF, IHC
Clonality	Monoclonal Clone: 19-26.1; same as MB-26.1
Formulation	Prepared in 10mM PBS with 0.05% BSA & 0.05% azide. Also available WITHOUT BSA & azide at 1.0mg/ml.
Storage Instructions	Antibody with azide - store at 2 to 8°C. Antibody without azide - store at -20 to -80°C. Antibody is stable for 24 months. Non-hazardous. No MSDS required.
Host	Mouse
Uniprot ID	P01903

Technical Details

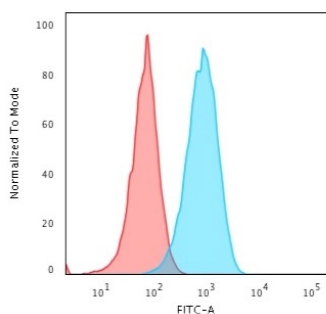
Immunogen	Raji cells
Predicted Reactive Species	Bovine, Canine, Mouse, Orangutan, Pig, Rabbit, Rat, Deer
Cross Reactivity	Does not cross-react with primate, avian or amphibian GR.
Isotype	IgG2a, kappa
Form	Liquid

Concentration	Purified antibody with BSA and azide at 200ug/ml
Purification	200ug/ml of antibody purified from Bioreactor Concentrate by Protein A/G.
Suggested Dilutions	<p>Dilute the sample so that the expected range of concentrations fall within the detection range of this kit.</p> <p>If the expected range of concentration is unknown, a pilot test should be conducted to decide the optimal dilution ratio for your samples.</p> <p>Some PubMed article(s) citing the expression level of this target are as follows:</p> <p>Boster Bio's internal QC testing used:</p> <p>Flow Cytometry (1-2ug/million cells)</p> <p>Immunofluorescence (1-2ug/ml)</p> <p>Immunohistochemistry (Formalin-fixed) (1-2ug/ml for 30 minutes at RT)(Staining of formalin-fixed tissues requires heating tissue sections in 10mM Tris with 1mM EDTA, pH 9.0, for 45 min at 95°C followed by cooling at RT for 20 minutes)</p> <p>Optimal dilution for a specific application should be determined.</p>

Anti-HLA-DRA (MHC II) Monoclonal Antibody (M01195-1) Images



Formalin-fixed, paraffin-embedded human Tonsil stained with Anti-HLA-DRA Mouse Monoclonal Antibody (19-26.1).



Flow Cytometric analysis of Raji cells. Anti-HLA-DRA Monoclonal Antibody (19-26.1) followed by goat anti-Mouse IgG-CF488 (Blue); Isotype control (Red).

Submit a product review to Biocompare.com

Submit a review of this product to Biocompare.com to receive a \$20 Amazon.com giftcard! Your reviews help your fellow scientists make the right decisions. Thank you for your contribution.



Anti-HLA-DRA (MHC II) Monoclonal Antibody