

## Anti-Chicken PAb Microtubule Associated Protein 2 MAP2 Antibody

Catalog Number: M01201-3

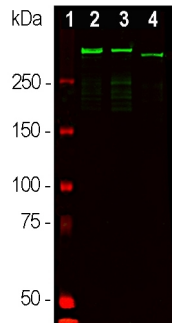
### Overview

Product Name	Anti-Chicken PAb Microtubule Associated Protein 2 MAP2 Antibody
Reactive Species	Human, Mouse, Rat
Description	Boster Bio Anti-Chicken PAb Microtubule Associated Protein 2 MAP2 Antibody catalog # M01201-3. Tested in IF, IHC, ICC, WB applications. This antibody reacts with Human, Mouse, Rat.
Application	IF, IHC, ICC, WB
Clonality	Polyclonal
Formulation	Concentrated IgY preparation, 0.02% sodium azide
Storage Instructions	Stable at 4° for at least one year
Host	Chicken
Uniprot ID	P11137

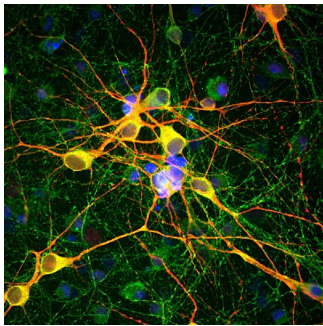
### Technical Details

Immunogen	Recombinant human construct of projection domain sequences, amino acids 235-1588
Concentration	0.5-1mg/ml, actual concentration vary by lot. Use suggested dilution ratio to decide dilution procedure.
Suggested Dilutions	<p>Dilute the sample so that the expected range of concentrations fall within the detection range of this kit.</p> <p>If the expected range of concentration is unknown, a pilot test should be conducted to decide the optimal dilution ratio for your samples.</p> <p>Some PubMed article(s) citing the expression level of this target are as follows:</p> <p>Boster Bio's internal QC testing used:</p> <p>WB: 1:20,000-50,000.</p> <p>IF/ICC and IHC: 1:5,000-1:10,000.</p>

## Anti-Chicken PAb Microtubule Associated Protein 2 MAP2 Antibody (M01201-3) Images



Western blot analysis of whole brain tissue lysates using chicken pAb to microtubule associated protein 2 (MAP2), M01201-3, dilution 1:50,000 in green: [1] protein standard (red), [2] adult rat brain, [3] embryonic E20 rat brain, [4] adult mouse brain. Strong band at ~280kDa mark corresponds to two major isoforms of MAP2 protein referred to as MAP2A and MAP2B. Smaller fragments of these isoforms are also detected if the antibody is used at higher concentrations.



Immunofluorescent analysis of cortical neuron-glia cell culture from E20 rat stained with chicken pAb to microtubule associated protein 2 (MAP2), M01201-3, dilution 1:10,000 in red, and mouse mAb, dilution 1:2,000, in green. The blue is DAPI staining of nuclear DNA. M01201-3 antibody stains dendrites and perikarya of neurons, while M01201-3 antibody labels neuronal perikarya, dendrites and also axonal process. As a result perikarya and dendrites appears orange-yellow, since they contain both MAP2 and tau, while axons are green.

## 10 Publications Citing This Product

1. PubMed ID: 27853172, Lithium promotes DNA stability and survival of ischemic retinal neurocytes by upregulating DNA ligase IV
2. PubMed ID: 26379744, Effects of Tetramethylpyrazine on Functional Recovery and Neuronal Dendritic Plasticity after Experimental Stroke
3. PubMed ID: 29673145, Brca1 Is Upregulated by 5-Aza-CdR and Promotes DNA Repair and Cell Survival, and Inhibits Neurite Outgrowth in Rat Retinal Neurons

Visit [bosterbio.com/anti-chicken-pab-microtubule-associated-protein-2-map2-antibody-m01201-3-boster.html](http://bosterbio.com/anti-chicken-pab-microtubule-associated-protein-2-map2-antibody-m01201-3-boster.html) to see all 10 publications.

## Submit a product review to Biocompare.com

Submit a review of this product to Biocompare.com to receive a \$20 Amazon.com giftcard! Your reviews help your fellow scientists make the right decisions. Thank you for your contribution.



Anti-Chicken PAb Microtubule Associated Protein 2 MAP2 Antibody