

Anti-S100A4 Rabbit Monoclonal Antibody

Catalog Number: M01217-1

About S100A4

Activated by icilin, eucalyptol, menthol, cold and modulation of intracellular pH. Involved in menthol sensation. Permeable for monovalent cations sodium, potassium, and cesium and divalent cation calcium.

Overview

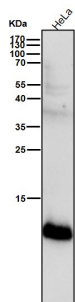
Product Name	Anti-S100A4 Rabbit Monoclonal Antibody
Reactive Species	Human, Mouse, Rat
Description	Boster Bio Anti-S100A4 Rabbit Monoclonal Antibody catalog # M01217-1. Tested in WB, IHC, ICC/IF, IP, Flow Cytometry applications. This antibody reacts with Human, Mouse, Rat.
Application	Flow Cytometry, IP, IF, IHC, ICC, WB
Clonality	Monoclonal GFG-19
Formulation	Rabbit IgG in phosphate buffered saline, pH 7.4, 150mM NaCl, 0.02% sodium azide and 50% glycerol, 0.4-0.5mg/ml BSA.
Storage Instructions	Store at -20°C for one year. For short term storage and frequent use, store at 4°C for up to one month. Avoid repeated freeze-thaw cycles.
Host	Rabbit
Uniprot ID	P26447

Technical Details

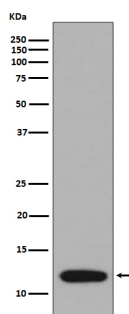
Immunogen	A synthesized peptide derived from human S100A4
Isotype	Rabbit IgG
Form	Liquid
Concentration	Actual concentration vary by lot. Use suggested dilution ratio to decide dilution procedure.
Purification	Affinity-chromatography
Suggested Dilutions	Dilute the sample so that the expected range of concentrations fall within the detection range of this kit. If the expected range of concentration is unknown, a pilot test should be conducted to decide the optimal dilution ratio for your samples. Some PubMed article(s) citing the expression level of this target are as follows: Boster Bio's internal QC testing used: WB 1:500-1:1000

	IHC 1:100-1:500 ICC/IF 1:50-1:200 IP 1:40 FC 1:100
--	---

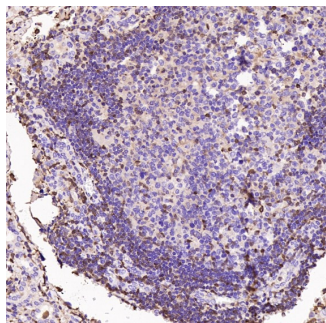
Anti-S100A4 Rabbit Monoclonal Antibody (M01217-1) Images



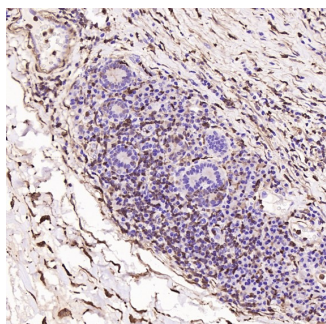
All lanes use the Antibody at 1:2K dilution for 1 hour at room temperature.



Western blot analysis of S100A4 expression in A375 cell lysate.

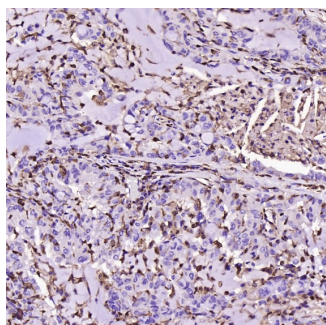
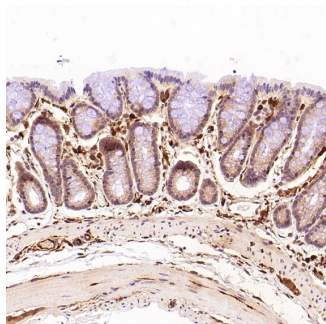


Immunohistochemical analysis of paraffin-embedded Human thyroid cancer, using the Antibody at 1:500 dilution.

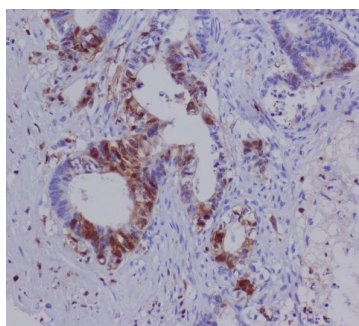


Immunohistochemical analysis of paraffin-embedded Human esophageal carcinoma, using the Antibody at 1:500 dilution.

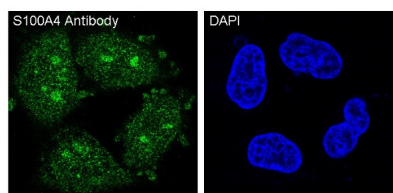
Immunohistochemical analysis of paraffin-embedded Rat stomach, using the Antibody at 1:1000 dilution.



Immunohistochemical analysis of paraffin-embedded Human lung adenocarcinoma, using the Antibody at 1:500 dilution.



Immunohistochemical analysis of paraffin-embedded human colon carcinoma, using S100A4 Antibody.



Immunofluorescent analysis of HeLa cells, using S100A4 Antibody.

Submit a product review to Biocompare.com

Submit a review of this product to Biocompare.com to receive a \$20 Amazon.com giftcard! Your reviews help your fellow scientists make the right decisions. Thank you for your contribution.



Anti-S100A4 Rabbit Monoclonal Antibody