

Anti-CD30 / TNFRSF8 (Hodgkin & Reed-Sternberg Cell Marker) Monoclonal Antibody

Catalog Number: M01225

About TNFRSF8

Recognizes a single chain glycoprotein of 105/120kDa, identified as CD30/Ki-1. CD30 is synthesized as a 90kDa precursor, which is processed in the Golgi complex into a membrane-bound phosphorylated mature 105/120kDa glycoprotein. In Hodgkin's disease, CD30/Ki-1 antigen is expressed by mononuclear-Hodgkin and multinucleated Reed-Sternberg cells. It is also expressed by the tumor cells of a majority of anaplastic large cell lymphomas as well as by a varying proportion of activated T and B cells. This monoclonal antibody distinguishes large cell lymphomas derived from activated lymphoid cells from histiocytic malignancies and lymphomas derived from resting and precursor lymphoid cells or from anaplastic carcinomas. About one third of the Ki-1 positive lymphomas lack the leukocyte common antigen (CD45).

Overview

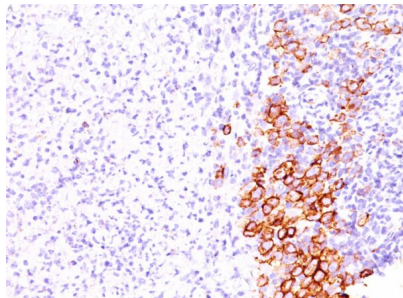
Product Name	Anti-CD30 / TNFRSF8 (Hodgkin & Reed-Sternberg Cell Marker) Monoclonal Antibody
Reactive Species	Human
Description	Boster Bio Anti-CD30 / TNFRSF8 (Hodgkin & Reed-Sternberg Cell Marker) Monoclonal Antibody (Catalog # M01225). Tested in Flow Cytometry, IF, IHC applications. This antibody reacts with Human.
Conjugate	Biotin
Application	Flow Cytometry, IF, IHC
Clonality	Monoclonal Clone: SPM609
Formulation	Prepared in 10mM PBS with 0.05% BSA & 0.05% azide. Also available WITHOUT BSA & azide at 1.0mg/ml.
Storage Instructions	Antibody with azide - store at 2 to 8°C. Antibody without azide - store at -20 to -80°C. Antibody is stable for 24 months. Non-hazardous. No MSDS required.
Host	Mouse
Uniprot ID	P28908

Technical Details

Immunogen	Recombinant human TNFRSF8 protein
Predicted Reactive Species	Bovine, Canine, Mouse, Orangutan, Pig, Rabbit, Rat, Deer
Cross Reactivity	Does not cross-react with primate, avian or amphibian GR.
Isotype	IgG1, kappa

Form	Liquid
Concentration	Purified antibody with BSA and azide at 200ug/ml
Purification	200ug/ml of antibody purified from Bioreactor Concentrate by Protein A/G.
Suggested Dilutions	<p>Dilute the sample so that the expected range of concentrations fall within the detection range of this kit.</p> <p>If the expected range of concentration is unknown, a pilot test should be conducted to decide the optimal dilution ratio for your samples.</p> <p>Some PubMed article(s) citing the expression level of this target are as follows:</p> <p>Boster Bio's internal QC testing used:</p> <p>Flow Cytometry (1-2ug/million cells)</p> <p>Immunofluorescence (1-2ug/ml)</p> <p>Immunohistochemistry (Formalin-fixed) (1-2ug/ml for 30 minutes at RT)(Staining of formalin-fixed tissues requires heating tissue sections in 1mM EDTA, pH 7.5-8.5, for 45 min at 95&degC followed by cooling at RT for 20 minutes)Optimal dilution for a specific application should be determined.</p>

Anti-CD30 / TNFRSF8 (Hodgkin & Reed-Sternberg Cell Marker) Monoclonal Antibody (M01225) Images



Formalin-fixed, paraffin-embedded human Hodgkin's Lymphoma stained with Anti-CD30 Monoclonal Antibody (SPM609).

Submit a product review to Biocompare.com

Submit a review of this product to Biocompare.com to receive a \$20 Amazon.com giftcard! Your reviews help your fellow scientists make the right decisions. Thank you for your contribution.



Anti-CD30 / TNFRSF8 (Hodgkin & Reed-Sternberg Cell Marker) Monoclonal Antibody