

## Anti-ABCG1 Rabbit Monoclonal Antibody

Catalog Number: M01227

### About ABCG1

Activated by icilin, eucalyptol, menthol, cold and modulation of intracellular pH. Involved in menthol sensation. Permeable for monovalent cations sodium, potassium, and cesium and divalent cation calcium.

### Overview

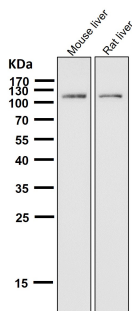
Product Name	Anti-ABCG1 Rabbit Monoclonal Antibody
Reactive Species	Human, Rat
Description	Boster Bio Anti-ABCG1 Rabbit Monoclonal Antibody catalog # M01227. Tested in WB, IHC, ICC/IF applications. This antibody reacts with Human, Rat.
Application	IF, IHC, ICC, WB
Clonality	Monoclonal CHH-1
Formulation	Rabbit IgG in phosphate buffered saline, pH 7.4, 150mM NaCl, 0.02% sodium azide and 50% glycerol, 0.4-0.5mg/ml BSA.
Storage Instructions	Store at -20°C for one year. For short term storage and frequent use, store at 4°C for up to one month. Avoid repeated freeze-thaw cycles.
Host	Rabbit
Uniprot ID	P45844

### Technical Details

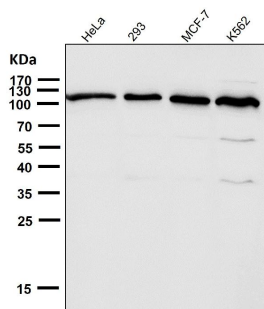
Immunogen	A synthesized peptide derived from human ABCG1
Isotype	Rabbit IgG
Form	Liquid
Concentration	Actual concentration vary by lot. Use suggested dilution ratio to decide dilution procedure.
Purification	Affinity-chromatography
Suggested Dilutions	Dilute the sample so that the expected range of concentrations fall within the detection range of this kit. If the expected range of concentration is unknown, a pilot test should be conducted to decide the optimal dilution ratio for your samples. Some PubMed article(s) citing the expression level of this target are as follows: Boster Bio's internal QC testing used: WB 1:500-1:1000

	IHC 1:50-1:100 ICC/IF 1:50-1:100
--	-------------------------------------

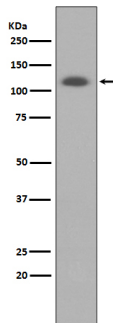
## Anti-ABCG1 Rabbit Monoclonal Antibody (M01227) Images



All lanes use the Antibody at 1:1K dilution for 1 hour at room temperature.



All lanes use the Antibody at 1:1K dilution for 1 hour at room temperature.



Western blot analysis of ABCG1 expression in HUVEC cell lysate.

## 2 Publications Citing This Product

1. PubMed ID: 21418611, Yan N, Ding T, Dong J, Li Y, Wu M. Lipids Health Dis. 2011 Mar 21;10:46. Doi: 10.1186/1476-511X-10-46. Sphingomyelin Synthase Overexpression Increases Cholesterol Accumulation And Decreases Cholesterol Secretion In Liver Cells.
2. PubMed ID: 26781796, Overexpression of C35 in breast carcinomas is associated with tumor progression and lymphnode metastasis

Visit [bosterbio.com/anti-abcg1-rabbit-monoclonal-antibody-m01227-boster.html](http://bosterbio.com/anti-abcg1-rabbit-monoclonal-antibody-m01227-boster.html) to see all 2 publications.

## Submit a product review to Biocompare.com

Submit a review of this product to Biocompare.com to receive a \$20 Amazon.com giftcard! Your reviews help your fellow scientists make the right decisions. Thank you for your contribution.



## Anti-ABCG1 Rabbit Monoclonal Antibody