

Anti-Chromogranin A / CHGA (Neuroendocrine Marker) Monoclonal Antibody

Catalog Number: M01256

About CHGA

Chromogranin A is present in neuroendocrine cells throughout the body, including the neuroendocrine cells of the large and small intestine, adrenal medulla and pancreatic islets. It is an excellent marker for carcinoid tumors, pheochromocytomas, paragangliomas, and other neuroendocrine tumors. Co-expression of chromogranin A and neuron specific enolase (NSE) is common in neuroendocrine neoplasms. Reportedly, co-expression of certain keratins and chromogranin indicates neuroendocrine lineage. The presence of strong anti-chromogranin staining and absence of anti-keratin staining should raise the possibility of paraganglioma. The co-expression of chromogranin and NSE is typical of neuroendocrine neoplasms. Most pituitary adenomas and prolactinomas readily express chromogranin.

Overview

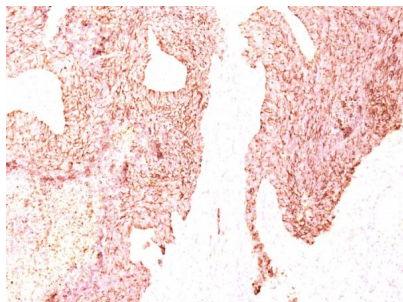
Product Name	Anti-Chromogranin A / CHGA (Neuroendocrine Marker) Monoclonal Antibody
Reactive Species	Human, Monkey, Mouse, Pig, Rat
Description	Boster Bio Anti-Chromogranin A / CHGA (Neuroendocrine Marker) Monoclonal Antibody (Catalog # M01256). Tested in Flow Cytometry, IF, IHC applications. This antibody reacts with Human, Monkey, Pig, Mouse, Rat.
Conjugate	Biotin
Application	Flow Cytometry, IF, IHC
Clonality	Monoclonal Clone: SPM339
Formulation	Prepared in 10mM PBS with 0.05% BSA & 0.05% azide. Also available WITHOUT BSA & azide at 1.0mg/ml.
Storage Instructions	Antibody with azide - store at 2 to 8°C. Antibody without azide - store at -20 to -80°C. Antibody is stable for 24 months. Non-hazardous. No MSDS required.
Host	Mouse
Uniprot ID	P10645

Technical Details

Immunogen	Human pheochromocytoma
Predicted Reactive Species	Bovine, Canine, Mouse, Orangutan, Pig, Rabbit, Rat, Deer
Cross Reactivity	Does not cross-react with primate, avian or amphibian GR.
Isotype	IgG1, kappa

Form	Liquid
Concentration	Purified antibody with BSA and azide at 200ug/ml
Purification	200ug/ml of antibody purified from Bioreactor Concentrate by Protein A/G.
Suggested Dilutions	<p>Dilute the sample so that the expected range of concentrations fall within the detection range of this kit.</p> <p>If the expected range of concentration is unknown, a pilot test should be conducted to decide the optimal dilution ratio for your samples.</p> <p>Some PubMed article(s) citing the expression level of this target are as follows:</p> <p>Boster Bio's internal QC testing used:</p> <p>Flow Cytometry (1-2ug/million cells)</p> <p>Immunofluorescence (1-2ug/ml)</p> <p>Immunohistochemistry (Formalin-fixed) (1-2ug/ml for 30 minutes at RT)(Staining of formalin-fixed tissues requires heating tissue sections in 10mM Tris with 1mM EDTA, pH 9.0, for 45 min at 95&degC followed by cooling at RT for 20 minutes)</p> <p>Optimal dilution for a specific application should be determined.</p>

Anti-Chromogranin A / CHGA (Neuroendocrine Marker) Monoclonal Antibody (M01256) Images



Formalin-fixed, paraffin-embedded human Small Cell Lung Carcinoma stained with Anti-Chromogranin A Monoclonal Antibody (SPM339)

1 Publications Citing This Product

1. PubMed ID: 31732520, Glumac PM, Gallant JP, Shapovalova M, Li Y, Murugan P, Gupta S, Coleman IM, Nelson PS, Dehm SM, LeBeau AM. Exploitation of CD133 for the Targeted Imaging of Lethal Prostate Cancer. Clin Cancer Res. 2020 Mar 1;26(5):1054-1064. doi:10.1158/1078-0432.CCR-19-1659. Epub 20

Visit bosterbio.com/anti-chromogranin-a-chga-neuroendocrine-marker-antibody-m01256-boster.html to see all 1 publications.

Submit a product review to Biocompare.com

Submit a review of this product to Biocompare.com to receive a \$20 Amazon.com giftcard! Your reviews help your fellow scientists make the right decisions. Thank you for your contribution.



Anti-Chromogranin A / CHGA (Neuroendocrine Marker) Monoclonal Antibody