

Anti-beta Actin ACTB Rabbit Monoclonal Antibody

Catalog Number: M01263

About ACTB

Activated by icilin, eucalyptol, menthol, cold and modulation of intracellular pH. Involved in menthol sensation. Permeable for monovalent cations sodium, potassium, and cesium and divalent cation calcium.

Overview

Product Name	Anti-beta Actin ACTB Rabbit Monoclonal Antibody
Reactive Species	Human, Mouse, Rat
Description	Boster Bio Anti-beta Actin ACTB Rabbit Monoclonal Antibody catalog # M01263. Tested in WB, IHC, ICC/IF applications. This antibody reacts with Human, Mouse, Rat.
Application	IF, IHC, ICC, WB
Clonality	Monoclonal BF-1
Formulation	Rabbit IgG in phosphate buffered saline, pH 7.4, 150mM NaCl, 0.02% sodium azide and 50% glycerol, 0.4-0.5mg/ml BSA.
Storage Instructions	Store at -20°C for one year. For short term storage and frequent use, store at 4°C for up to one month. Avoid repeated freeze-thaw cycles.
Host	Rabbit
Uniprot ID	P60709

Technical Details

Immunogen	A synthesized peptide derived from human beta Actin
Isotype	Rabbit IgG
Form	Liquid
Concentration	Actual concentration vary by lot. Use suggested dilution ratio to decide dilution procedure.
Purification	Affinity-chromatography
Suggested Dilutions	Dilute the sample so that the expected range of concentrations fall within the detection range of this kit. If the expected range of concentration is unknown, a pilot test should be conducted to decide the optimal dilution ratio for your samples. Some PubMed article(s) citing the expression level of this target are as follows: Boster Bio's internal QC testing used: WB 1:5000-1:50000

	IHC 1:50-1:200 ICC/IF 1:50-1:200
--	-------------------------------------

Anti-beta Actin ACTB Rabbit Monoclonal Antibody (M01263) Images

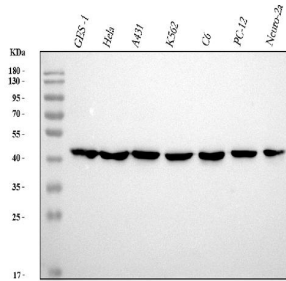


Figure 1. Western blot analysis of Beta Actin using anti-Beta Actin antibody (M01263).

Electrophoresis was performed on a 5-20% SDS-PAGE gel at 70V (Stacking gel) / 90V (Resolving gel) for 2-3 hours. The sample well of each lane was loaded with 30 ug of sample under reducing conditions.

Lane 1: human GES-1 whole cell lysates,

Lane 2: human HeLa whole cell lysates,

Lane 3: human A431 whole cell lysates,

Lane 4: human K562 whole cell lysates,

Lane 5: rat C6 whole cell lysates,

Lane 6: rat PC-12 whole cell lysates,

Lane 7: mouse Neuro-2a whole cell lysates.

After electrophoresis, proteins were transferred to a nitrocellulose membrane at 150 mA for 50-90 minutes.

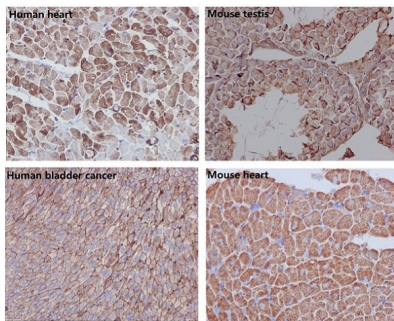
Blocked the membrane with 5% non-fat milk/TBS for 1.5 hour at RT. The membrane was incubated with rabbit anti-Beta Actin antigen affinity purified monoclonal antibody

(Catalog # M01263) at 1:5000 overnight at 4°C, then washed with TBS-0.1%Tween 3 times with 5 minutes each

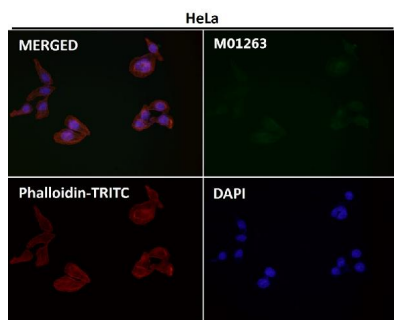
and probed with a goat anti-rabbit IgG-HRP secondary antibody at a dilution of 1:500 for 1.5 hour at RT. The signal

is developed using an Enhanced Chemiluminescent detection (ECL) kit (Catalog # EK1002) with Tanon 5200 system. A specific band was detected for Beta Actin at

approximately 42 kDa. The expected band size for Beta Actin is at 42 kDa.



Immunohistochemical analysis of paraffin-embedded (1) Human heart; (2) Mouse testis; (3) Human bladder cancer; (4) Mouse heart, using beta Actin Antibody.



Immunofluorescent analysis using the Antibody at 1:50 dilution.

370 Publications Citing This Product

2. PubMed ID: 10.1016/j.intimp.2019.105947, Zileuton ameliorates depressive-like behaviors, hippocampal neuroinflammation, apoptosis and synapse dysfunction in mice exposed to chronic mild stress

3. PubMed ID: 10.1016/j.ejphar.2020.173136, Prolonged overnutrition with fructose or fat induces metabolic derangements in rats by disrupting the crosstalk between the hypothalamus and periphery: Possible amelioration with fenofibrate

Visit bosterbio.com/anti-beta-actin-rabbit-monoclonal-antibody-m01263-boster.html to see all 370 publications.

Submit a product review to Biocompare.com

Submit a review of this product to Biocompare.com to receive a \$20 Amazon.com giftcard! Your reviews help your fellow scientists make the right decisions. Thank you for your contribution.



Anti-beta Actin ACTB Rabbit Monoclonal Antibody