

Anti-Hsp60 HSPD1 Rabbit Monoclonal Antibody

Catalog Number: M01280-1

About HSPD1

Activated by icilin, eucalyptol, menthol, cold and modulation of intracellular pH. Involved in menthol sensation. Permeable for monovalent cations sodium, potassium, and cesium and divalent cation calcium.

Overview

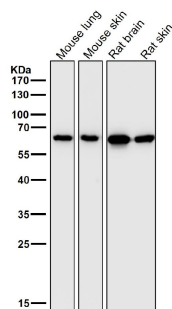
Product Name	Anti-Hsp60 HSPD1 Rabbit Monoclonal Antibody
Reactive Species	Human, Mouse, Rat
Description	Boster Bio Anti-Hsp60 HSPD1 Rabbit Monoclonal Antibody catalog # M01280-1. Tested in WB, IHC applications. This antibody reacts with Human, Mouse, Rat.
Application	IHC, WB
Clonality	Monoclonal DOI-8
Formulation	Rabbit IgG in phosphate buffered saline, pH 7.4, 150mM NaCl, 0.02% sodium azide and 50% glycerol, 0.4-0.5mg/ml BSA.
Storage Instructions	Store at -20°C for one year. For short term storage and frequent use, store at 4°C for up to one month. Avoid repeated freeze-thaw cycles.
Host	Rabbit
Uniprot ID	P10809

Technical Details

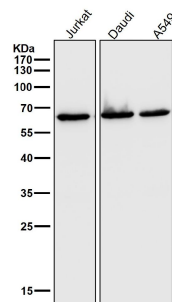
Immunogen	A synthesized peptide derived from human Hsp60
Isotype	Rabbit IgG
Form	Liquid
Concentration	Actual concentration vary by lot. Use suggested dilution ratio to decide dilution procedure.
Purification	Affinity-chromatography
Suggested Dilutions	Dilute the sample so that the expected range of concentrations fall within the detection range of this kit. If the expected range of concentration is unknown, a pilot test should be conducted to decide the optimal dilution ratio for your samples. Some PubMed article(s) citing the expression level of this target are as follows: Boster Bio's internal QC testing used: WB 1:500-1:2000

	IHC 1:50-1:200
--	----------------

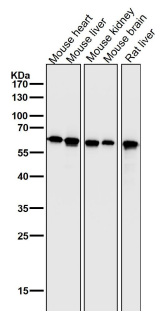
Anti-Hsp60 HSPD1 Rabbit Monoclonal Antibody (M01280-1) Images



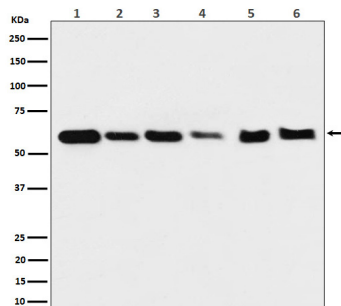
All lanes use the Antibody at 1:1W dilution for 1 hour at room temperature.



All lanes use the Antibody at 1:1W dilution for 1 hour at room temperature.

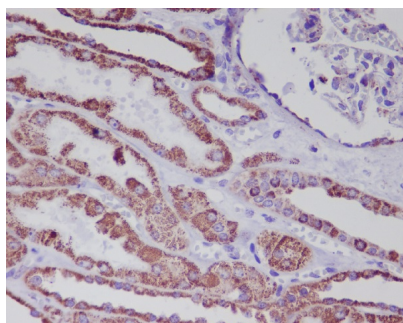
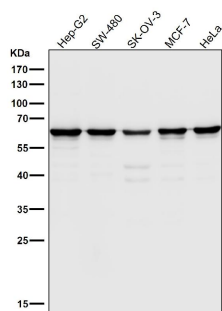


All lanes use the Antibody at 1:1W dilution for 1 hour at room temperature.



Western blot analysis of Hsp60 expression in (1) HeLa cell lysate; (2) 293T cell lysate; (3) NIH/3T3 cell lysate; (4) Mouse heart lysate; (5) PC-12 cell lysate; (6) Rat heart lysate.

All lanes use the Antibody at 1:1W dilution for 1 hour at room temperature.



Immunohistochemical analysis of paraffin-embedded human kidney, using Hsp60 Antibody .

3 Publications Citing This Product

1. PubMed ID: 24735884, Hepatic mitochondrial and ER stress induced by defective PPAR γ signaling in the pathogenesis of hepatic steatosis
2. PubMed ID: 27698781, Expression and location of HSP60 and HSP10 in the heart tissue of heat-stressed rats
3. PubMed ID: 22500017, Hager L, Li L, Pun H, Liu L, Hossain Ma, Maguire Gf, Naples M, Baker C, Magomedova L, Tam J, Adeli K, Cummins Cl, Connelly Pw, Ng Ds. J Biol Chem. 2012 Jun 8;287(24):20755-68. Doi: 10.1074/Jbc.M112.340919. Epub 2012 Apr 12. Lecithin:Cholesterol Ac...

Visit bosterbio.com/anti-hsp60-rabbit-monoclonal-antibody-m01280-1-boster.html to see all 3 publications.

Submit a product review to Biocompare.com

Submit a review of this product to Biocompare.com to receive a \$20 Amazon.com giftcard! Your reviews help your fellow scientists make the right decisions. Thank you for your contribution.



Anti-Hsp60 HSPD1 Rabbit Monoclonal Antibody