

## Anti-Cyclophilin A PPIA Rabbit Monoclonal Antibody

Catalog Number: M01308

### About PPIA

Activated by icilin, eucalyptol, menthol, cold and modulation of intracellular pH. Involved in menthol sensation. Permeable for monovalent cations sodium, potassium, and cesium and divalent cation calcium.

### Overview

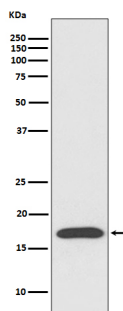
|                      |  |
|----------------------|--|
| Product Name         | Anti-Cyclophilin A PPIA Rabbit Monoclonal Antibody   |
| Reactive Species     | Human, Mouse, Rat  |
| Description          | Boster Bio Anti-Cyclophilin A PPIA Rabbit Monoclonal Antibody catalog # M01308. Tested in WB, IHC applications. This antibody reacts with Human, Mouse, Rat. |
| Application          | IHC, WB  |
| Clonality            | Monoclonal AABG-16   |
| Formulation          | Rabbit IgG in phosphate buffered saline, pH 7.4, 150mM NaCl, 0.02% sodium azide and 50% glycerol, 0.4-0.5mg/ml BSA.  |
| Storage Instructions | Store at -20°C for one year. For short term storage and frequent use, store at 4°C for up to one month. Avoid repeated freeze-thaw cycles.                   |
| Host                 | Rabbit   |
| Uniprot ID           | P62937   |

### Technical Details

|                     |  |
|---------------------|--|
| Immunogen           | A synthesized peptide derived from human Cyclophilin A   |
| Isotype             | Rabbit IgG   |
| Form                | Liquid   |
| Concentration       | Actual concentration vary by lot. Use suggested dilution ratio to decide dilution procedure.   |
| Purification        | Affinity-chromatography  |
| Suggested Dilutions | <p>Dilute the sample so that the expected range of concentrations fall within the detection range of this kit.</p> <p>If the expected range of concentration is unknown, a pilot test should be conducted to decide the optimal dilution ratio for your samples.</p> <p>Some PubMed article(s) citing the expression level of this target are as follows:</p> <p>Boster Bio's internal QC testing used:</p> <p>WB 1:500-1:2000</p> |

|  |                |
|--|----------------|
|  | IHC 1:50-1:200 |
|--|----------------|

## Anti-Cyclophilin A PPIA Rabbit Monoclonal Antibody (M01308) Images



Western blot analysis of Cyclophilin A expression in HepG2 cell lysate.

### Submit a product review to Biocompare.com

Submit a review of this product to Biocompare.com to receive a \$20 Amazon.com giftcard! Your reviews help your fellow scientists make the right decisions. Thank you for your contribution.



Anti-Cyclophilin A PPIA Rabbit Monoclonal Antibody