

Anti-TTF1 (Thyroid transcription factor 1) NKX2-1 Rabbit Monoclonal Antibody, Clone#RM373

Catalog Number: M01322-2

Overview

Product Name	Anti-TTF1 (Thyroid transcription factor 1) NKX2-1 Rabbit Monoclonal Antibody, Clone#RM373
Reactive Species	Human
Description	Boster Bio Anti-TTF1 (Thyroid transcription factor 1) NKX2-1 Rabbit Monoclonal Antibody, Clone#RM373 (Catalog # M01322-2). Tested in IHC, WB applications. This antibody reacts with Human.
Application	IHC, WB
Clonality	Monoclonal RM373
Formulation	50% Glycerol/PBS with 1% BSA and 0.09% sodium azide
Storage Instructions	Store at -20°C for one year. Avoid repeated freeze-thaw cycles.
Host	Rabbit
Uniprot ID	P43699

Technical Details

Immunogen	A peptide corresponding to N-terminus of human TTF1 (Thyroid transcription factor 1) (Homeobox protein Nkx-2.1)
Cross Reactivity	This antibody reacts to human TTF1 ((Thyroid transcription factor 1) (Homeobox protein Nkx-2.1). It may also react to mouse and rat TTF1, as predicted by immunogen homology.
Isotype	Rabbit IgG
Form	Liquid
Concentration	0.5-1mg/ml, actual concentration vary by lot. Use suggested dilution ratio to decide dilution procedure.
Purification	Protein A affinity purified from an animal origin-free culture supernatant
Suggested Dilutions	Dilute the sample so that the expected range of concentrations fall within the detection range of this kit. If the expected range of concentration is unknown, a pilot test should be conducted to decide the optimal dilution ratio for your samples. Some PubMed article(s) citing the expression level of this target are as follows: Boster Bio's internal QC testing used: Immunohistochemistry (IHC): 1:500-1:1000 dilution WB: 1:1000-1:20000 dilution.

Anti-TTF1 (Thyroid transcription factor 1) NKX2-1 Rabbit Monoclonal Antibody, Clone#RM373 (M01322-2) Images

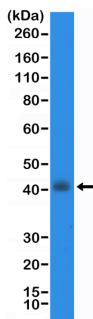


Figure 1. Western Blotting result
Western Blot of TT cell lysate using anti-TTF1 rabbit monoclonal antibody (Clone RM373) at a 1:20000 dilution.

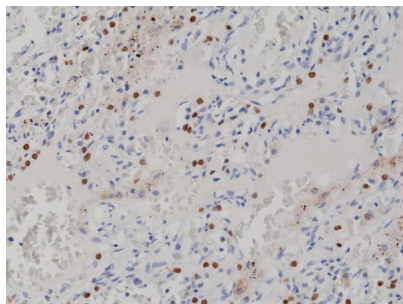


Figure 2. IHC result
Immunohistochemical staining of formalin fixed and paraffin embedded human lung cancer tissue section using anti-TTF1 rabbit monoclonal antibody (Clone RM373) at a 1:1000 dilution.

Submit a product review to Biocompare.com

Submit a review of this product to Biocompare.com to receive a \$20 Amazon.com giftcard! Your reviews help your fellow scientists make the right decisions. Thank you for your contribution.



Anti-TTF1 (Thyroid transcription factor 1) NKX2-1 Rabbit Monoclonal Antibody, Clone#RM373