

## Anti-Thrombomodulin / CD141 (Endothelial Cell Marker) Monoclonal Antibody

Catalog Number: M01325

### About THBD

This monoclonal antibody recognizes a protein of 75kDa, identified as Thrombomodulin. Thrombomodulin is a transmembrane glycoprotein with natural anticoagulant properties. It is normally expressed by a restricted number of cells, such as endothelial and mesothelial cells. In addition, synovial lining and syncytio-trophoblasts of placenta also express thrombomodulin. This protein is present in almost all of benign vascular tumors and majority of malignant vascular tumors (Kaposi's sarcoma, angiosarcoma, and epithelioid hemangioendothelioma). Hence, anti-thrombomodulin serves as a sensitive marker for lymphatic endothelial cells and their tumors. Recently, thrombomodulin antibody has been used for mesothelial cells and malignant mesotheliomas.

### Overview

Product Name	Anti-Thrombomodulin / CD141 (Endothelial Cell Marker) Monoclonal Antibody
Reactive Species	Human
Description	Boster Bio Anti-Thrombomodulin / CD141 (Endothelial Cell Marker) Monoclonal Antibody (Catalog # M01325). Tested in ELISA, IHC applications. This antibody reacts with Human.
Conjugate	Biotin
Application	ELISA, IHC
Clonality	Monoclonal Clone: THBD/1782
Formulation	Prepared in 10mM PBS with 0.05% BSA & 0.05% azide. Also available WITHOUT BSA & azide at 1.0mg/ml.
Storage Instructions	Antibody with azide - store at 2 to 8°C. Antibody without azide - store at -20 to -80°C. Antibody is stable for 24 months. Non-hazardous. No MSDS required.
Host	Mouse
Uniprot ID	P07204

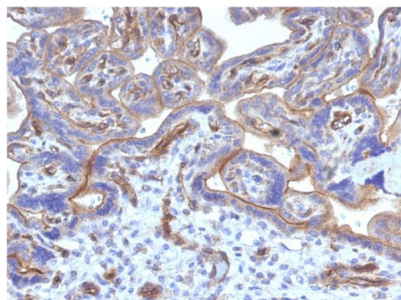
### Technical Details

Immunogen	Recombinant fragment (around aa 69-194) of human Thrombomodulin (CD141) protein (exact sequence is proprietary)
Predicted Reactive Species	Bovine, Canine, Mouse, Orangutan, Pig, Rabbit, Rat, Deer
Cross Reactivity	Does not cross-react with primate, avian or amphibian GR.
Isotype	IgG2a, kappa

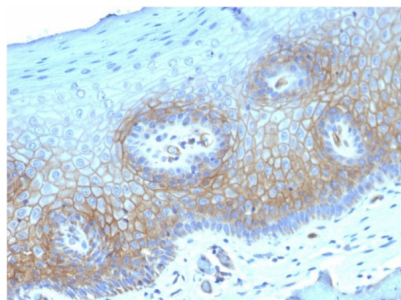
Form	Liquid
Concentration	Purified antibody with BSA and azide at 200ug/ml
Purification	200ug/ml of antibody purified from Bioreactor Concentrate by Protein A/G.
Suggested Dilutions	<p>Dilute the sample so that the expected range of concentrations fall within the detection range of this kit.</p> <p>If the expected range of concentration is unknown, a pilot test should be conducted to decide the optimal dilution ratio for your samples.</p> <p>Some PubMed article(s) citing the expression level of this target are as follows:</p> <p>Boster Bio's internal QC testing used:</p> <p>ELISA (Use Ab at 2-4ug/ml for coating) (Order Ab without BSA)</p> <p>Immunohistochemistry (Formalin-fixed) (1-2ug/ml for 30 minutes at RT)(Staining of formalin-fixed tissues is enhanced by heating tissue sections in 10mM Tris buffer with 1mM EDTA, pH 9.0, for 45 min at 95&amp;degC followed by cooling at RT for 20 minutes)Optimal dilution for a specific application should be determined.</p>

## Anti-Thrombomodulin / CD141 (Endothelial Cell Marker) Monoclonal Antibody (M01325) Images

---



Formalin-fixed, paraffin-embedded human Placenta stained with Anti-Thrombomodulin/CD141 Mouse Monoclonal Antibody (THBD/1782).



Formalin-fixed, paraffin-embedded human Cervical Carcinoma stained with Anti-Thrombomodulin/CD141 Mouse Monoclonal Antibody (THBD/1782).

### Submit a product review to Biocompare.com

Submit a review of this product to Biocompare.com to receive a \$20 Amazon.com giftcard! Your reviews help your fellow scientists make the right decisions. Thank you for your contribution.



Anti-Thrombomodulin / CD141 (Endothelial Cell Marker) Monoclonal Antibody