

Anti-NDRG1 (Marker of Tumor Aggressiveness) Monoclonal Antibody

Catalog Number: M01327

About NDRG1

This monoclonal antibody recognizes a protein of 75kDa, identified as Thrombomodulin. Thrombomodulin is a transmembrane glycoprotein with natural anticoagulant properties. It is normally expressed by a restricted number of cells, such as endothelial and mesothelial cells. In addition, synovial lining and syncytio-trophoblasts of placenta also express thrombomodulin. This protein is present in almost all of benign vascular tumors and majority of malignant vascular tumors (Kaposi's sarcoma, angiosarcoma, and epithelioid hemangioendothelioma). Hence, anti-thrombomodulin serves as a sensitive marker for lymphatic endothelial cells and their tumors. Recently, thrombomodulin antibody has been used for mesothelial cells and malignant mesotheliomas.

Overview

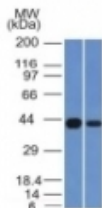
Product Name	Anti-NDRG1 (Marker of Tumor Aggressiveness) Monoclonal Antibody
Reactive Species	Human
Description	Boster Bio Anti-NDRG1 (Marker of Tumor Aggressiveness) Monoclonal Antibody catalog # M01327. Tested in WB applications. This antibody reacts with Human.
Conjugate	Biotin
Application	WB
Clonality	Monoclonal NDRG1/1383
Formulation	Prepared in 10mM PBS with 0.05% BSA & 0.05% azide. Also available WITHOUT BSA & azide at 1.0mg/ml.
Storage Instructions	Antibody with azide - store at 2 to 8°C. Antibody without azide - store at -20 to -80°C. Antibody is stable for 24 months. Non-hazardous. No MSDS required.
Host	Mouse
Uniprot ID	Q92597

Technical Details

Immunogen	Recombinant fragment of human NDRG1 fragment (aa162-283) (exact sequence is proprietary)
Predicted Reactive Species	Bovine, Canine, Mouse, Orangutan, Pig, Rabbit, Rat, Deer
Cross Reactivity	Does not cross-react with primate, avian or amphibian GR.
Isotype	IgG2a, kappa
Form	Liquid

Concentration	0.5-1mg/ml, actual concentration vary by lot. Use suggested dilution ratio to decide dilution procedure.
Purification	200ug/ml of antibody purified from Bioreactor Concentrate by Protein A/G.
Suggested Dilutions	<p>Dilute the sample so that the expected range of concentrations fall within the detection range of this kit.</p> <p>If the expected range of concentration is unknown, a pilot test should be conducted to decide the optimal dilution ratio for your samples.</p> <p>Some PubMed article(s) citing the expression level of this target are as follows:</p> <p>Boster Bio's internal QC testing used:</p> <p>Western Blotting (0.5-1.0ug/ml)</p> <p>User need to optimize the dilution ratio for this antibody</p>

Anti-NDRG1 (Marker of Tumor Aggressiveness) Monoclonal Antibody (M01327) Images



Western Blot of Kidney and HeLa Cell Lysate using NDRG1 Monoclonal Antibody (NDRG1/1383)

Submit a product review to Biocompare.com

Submit a review of this product to Biocompare.com to receive a \$20 Amazon.com giftcard! Your reviews help your fellow scientists make the right decisions. Thank you for your contribution.



Anti-NDRG1 (Marker of Tumor Aggressiveness) Monoclonal Antibody