

## Anti-Cathepsin D CTSD Rabbit Monoclonal Antibody

Catalog Number: M01361

### About CTSD

Furin is likely to represent the ubiquitous endoprotease activity within constitutive secretory pathways and capable of cleavage at the RX (K/R) R consensus motif.

### Overview

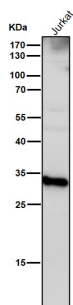
Product Name	Anti-Cathepsin D CTSD Rabbit Monoclonal Antibody
Reactive Species	Human, Mouse, Rat
Description	Boster Bio Anti-Cathepsin D CTSD Rabbit Monoclonal Antibody catalog # M01361. Tested in WB, IHC, ICC/IF, IP, Flow Cytometry applications. This antibody reacts with Human, Mouse, Rat.
Application	Flow Cytometry, IP, IF, IHC, ICC, WB
Clonality	Monoclonal CEF-3
Formulation	Rabbit IgG in phosphate buffered saline, pH 7.4, 150mM NaCl, 0.02% sodium azide and 50% glycerol, 0.4-0.5mg/ml BSA.
Storage Instructions	Store at -20°C for one year. For short term storage and frequent use, store at 4°C for up to one month. Avoid repeated freeze-thaw cycles.
Host	Rabbit
Uniprot ID	P07339

### Technical Details

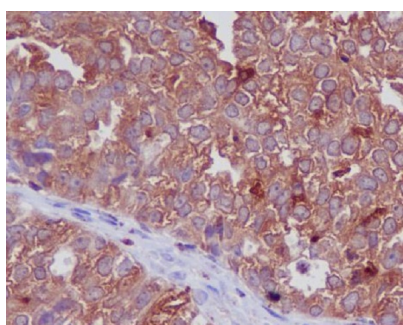
Immunogen	A synthesized peptide derived from human Cathepsin D
Isotype	Rabbit IgG
Form	Liquid
Concentration	Actual concentration vary by lot. Use suggested dilution ratio to decide dilution procedure.
Purification	Affinity-chromatography
Suggested Dilutions	<p>Dilute the sample so that the expected range of concentrations fall within the detection range of this kit.</p> <p>If the expected range of concentration is unknown, a pilot test should be conducted to decide the optimal dilution ratio for your samples.</p> <p>Some PubMed article(s) citing the expression level of this target are as follows:</p> <p>Boster Bio's internal QC testing used:</p> <p>WB 1:500-1:2000</p>

	IHC 1:50-1:200 ICC/IF 1:50-1:200 IP 1:50 FC 1:20
--	---

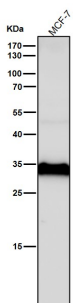
## Anti-Cathepsin D CTSD Rabbit Monoclonal Antibody (M01361) Images



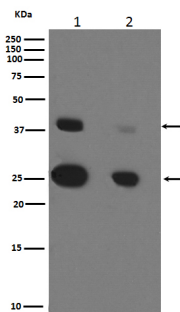
All lanes use the Antibody at 1:2W dilution for 1 hour at room temperature.



Immunohistochemical analysis of paraffin-embedded human ovarian cancer, using Cathepsin D Antibody.



All lanes use the Antibody at 1:2W dilution for 1 hour at room temperature.



Western blot analysis of Cathepsin D expression in (1)MCF-7 cell lysate;(2)SKBR-3 cell lysate.

## 1 Publications Citing This Product

1. PubMed ID: 33203874, Ma WQ,Sun XJ,Zhu Y,Liu NF. PDK4 promotes vascular calcification by interfering with autophagic activity and metabolic reprogramming. Cell Death Dis.2020 Nov 17;11(11):991.doi:10.1038/s41419-020-03162-w. PMID:33203874;PMCID:PMC7673024.

Visit [bosterbio.com/anti-cathepsin-d-rabbit-monoclonal-antibody-m01361-boster.html](https://www.bosterbio.com/anti-cathepsin-d-rabbit-monoclonal-antibody-m01361-boster.html) to see all 1 publications.

## Submit a product review to Biocompare.com

Submit a review of this product to Biocompare.com to receive a \$20 Amazon.com giftcard! Your reviews help your fellow scientists make the right decisions. Thank you for your contribution.



Anti-Cathepsin D CTSD Rabbit Monoclonal Antibody