

## Anti-Estrogen Inducible Protein pS2 Monoclonal Antibody

Catalog Number: M01391-1

### About TFF1

Furin is likely to represent the ubiquitous endoprotease activity within constitutive secretory pathways and capable of cleavage at the RX (K/R) R consensus motif.

### Overview

Product Name	Anti-Estrogen Inducible Protein pS2 Monoclonal Antibody
Reactive Species	Human
Description	Boster Bio Anti-Estrogen Inducible Protein pS2 Monoclonal Antibody catalog # M01391-1. Tested in WB, IHC, ICC/IF, IP, Flow Cytometry applications. This antibody reacts with Human.
Application	Flow Cytometry, IP, IF, IHC, ICC, WB
Clonality	Monoclonal ADIB-20
Formulation	Rabbit IgG in phosphate buffered saline, pH 7.4, 150mM NaCl, 0.02% sodium azide and 50% glycerol, 0.4-0.5mg/ml BSA.
Storage Instructions	Store at -20°C for one year. For short term storage and frequent use, store at 4°C for up to one month. Avoid repeated freeze-thaw cycles.
Host	Rabbit
Uniprot ID	P04155

### Technical Details

Immunogen	A synthesized peptide derived from human Estrogen Inducible Protein pS2 Stabilizer of the mucous gel overlying the gastrointestinal mucosa that provides a physical barrier against various noxious agents. May inhibit the growth of calcium oxalate crystals in urine.
Isotype	Rabbit IgG
Form	Liquid
Concentration	Actual concentration vary by lot. Use suggested dilution ratio to decide dilution procedure.
Purification	Affinity-chromatography
Suggested Dilutions	Dilute the sample so that the expected range of concentrations fall within the detection range of this kit. If the expected range of concentration is unknown, a pilot test should be conducted to decide the optimal dilution ratio for your samples. Some PubMed article(s) citing the expression level of this target are as follows:

Boster Bio's internal QC testing used:

WB 1:500-1:2000

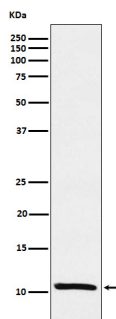
IHC 1:50-1:200

ICC/IF 1:50-1:200

IP 1:50

FC 1:50

## Anti-Estrogen Inducible Protein pS2 Monoclonal Antibody (M01391-1) Images



Western blot analysis of Estrogen Inducible Protein pS2 expression in MCF-7 cell lysate.

### Submit a product review to Biocompare.com

Submit a review of this product to Biocompare.com to receive a \$20 Amazon.com giftcard! Your reviews help your fellow scientists make the right decisions. Thank you for your contribution.



Anti-Estrogen Inducible Protein pS2 Monoclonal Antibody