

Anti-Cytokeratin 14 (KRT14) (Squamous Cell Marker) Monoclonal Antibody

Catalog Number: M01432

About KRT14

Cytokeratin 14 (CK14) belongs to the type I (or A or acidic) subfamily of low molecular weight keratins and exists in combination with keratin 5 (type II or B or basic). CK14 is found in basal cells of squamous epithelia, some glandular epithelia, myoepithelium, and mesothelial cells. Anti-CK14 is useful in differentiating squamous cell carcinomas from poorly differentiated epithelial tumors. Anti-CK14 is one of the specific basal markers for distinguishing between basal and non-basal subtypes of breast carcinomas. Anti-CK14 is also a good marker for differentiation of intraductal from invasive salivary duct carcinoma by the positive staining of basal cells surrounding the in-situ neoplasm as well as for differentiation of benign prostate from prostate carcinoma. Furthermore, this antibody has been useful in separating oncocytic tumors of the kidney from its renal mimics, and in identifying metaplastic carcinomas of the breast.

Overview

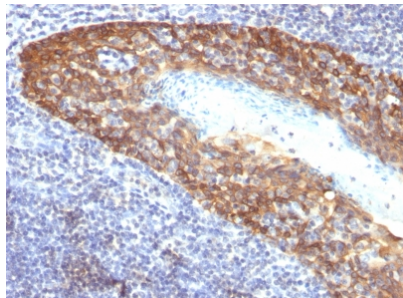
Product Name	Anti-Cytokeratin 14 (KRT14) (Squamous Cell Marker) Monoclonal Antibody
Reactive Species	Human, Mouse, Rat
Description	Boster Bio Anti-Cytokeratin 14 (KRT14) (Squamous Cell Marker) Monoclonal Antibody (Catalog # M01432). Tested in Flow Cytometry, IF, IHC applications. This antibody reacts with Human, Mouse, Rat.
Conjugate	Biotin
Application	Flow Cytometry, IF, IHC
Clonality	Monoclonal Clone: KRT14/532
Formulation	Prepared in 10mM PBS with 0.05% BSA & 0.05% azide. Also available WITHOUT BSA & azide at 1.0mg/ml.
Storage Instructions	Antibody with azide - store at 2 to 8°C. Antibody without azide - store at -20 to -80°C. Antibody is stable for 24 months. Non-hazardous. No MSDS required.
Host	Mouse
Uniprot ID	P02533

Technical Details

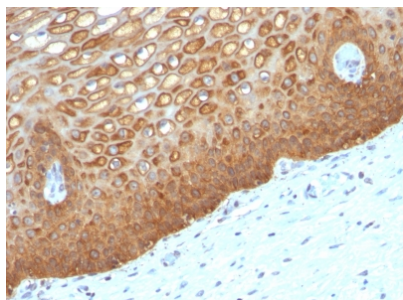
Immunogen	Recombinant full-length human KRT14 protein
Predicted Reactive Species	Bovine, Canine, Mouse, Orangutan, Pig, Rabbit, Rat, Deer
Cross Reactivity	Does not cross-react with primate, avian or amphibian GR.

Isotype	IgG3, kappa
Form	Liquid
Concentration	Purified antibody with BSA and azide at 200ug/ml
Purification	200ug/ml of antibody purified from Bioreactor Concentrate by Protein A/G.
Suggested Dilutions	<p>Dilute the sample so that the expected range of concentrations fall within the detection range of this kit.</p> <p>If the expected range of concentration is unknown, a pilot test should be conducted to decide the optimal dilution ratio for your samples.</p> <p>Some PubMed article(s) citing the expression level of this target are as follows:</p> <p>Boster Bio's internal QC testing used:</p> <p>Flow Cytometry (0.5- 1ug/million cells in 0.1ml)</p> <p>Immunofluorescence (1-2ug/ml)</p> <p>Immunohistochemistry (Formalin-fixed) (1-2ug/ml for 30 min at RT)</p> <p>(Staining of formalin-fixed tissues requires heating tissue sections in 10mM Tris with 1mM EDTA, pH 9.0, for 45 min at 95&degC followed by cooling at RT for 20 minutes)</p> <p>Optimal dilution for a specific application should be determined.</p>

Anti-Cytokeratin 14 (KRT14) (Squamous Cell Marker) Monoclonal Antibody (M01432) Images



Formalin-fixed, paraffin-embedded human Tonsil stained with Anti-Cytokeratin 14 Monoclonal Antibody (KRT14/532).



Formalin-fixed, paraffin-embedded human Cervix stained with Anti-Cytokeratin 14 Monoclonal Antibody (KRT14/532).

Submit a product review to Biocompare.com

Submit a review of this product to Biocompare.com to receive a \$20 Amazon.com giftcard! Your reviews help your fellow scientists make the right decisions. Thank you for your contribution.



Anti-Cytokeratin 14 (KRT14) (Squamous Cell Marker) Monoclonal Antibody