

## Anti-Met (c-Met) Rabbit Monoclonal Antibody

Catalog Number: M01488

### About MET

Furin is likely to represent the ubiquitous endoprotease activity within constitutive secretory pathways and capable of cleavage at the RX (K/R) R consensus motif.

### Overview

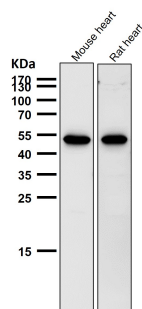
Product Name	Anti-Met (c-Met) Rabbit Monoclonal Antibody
Reactive Species	Human, Mouse, Rat
Description	Boster Bio Anti-Met (c-Met) Rabbit Monoclonal Antibody catalog # M01488. Tested in WB, IHC, ICC/IF, Flow Cytometry applications. This antibody reacts with Human, Mouse, Rat.
Application	Flow Cytometry, IF, IHC, ICC, WB
Clonality	Monoclonal BFA-13
Formulation	Rabbit IgG in phosphate buffered saline, pH 7.4, 150mM NaCl, 0.02% sodium azide and 50% glycerol, 0.4-0.5mg/ml BSA.
Storage Instructions	Store at -20°C for one year. For short term storage and frequent use, store at 4°C for up to one month. Avoid repeated freeze-thaw cycles.
Host	Rabbit
Uniprot ID	P08581

### Technical Details

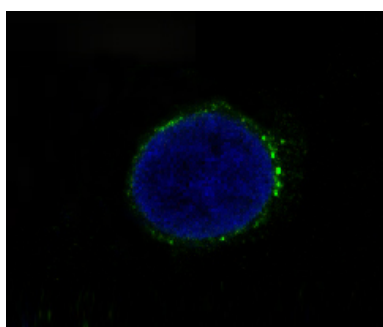
Immunogen	A synthesized peptide derived from human Met (c-Met)
Isotype	Rabbit IgG
Form	Liquid
Concentration	Actual concentration vary by lot. Use suggested dilution ratio to decide dilution procedure.
Purification	Affinity-chromatography
Suggested Dilutions	Dilute the sample so that the expected range of concentrations fall within the detection range of this kit. If the expected range of concentration is unknown, a pilot test should be conducted to decide the optimal dilution ratio for your samples. Some PubMed article(s) citing the expression level of this target are as follows: Boster Bio's internal QC testing used: WB 1:500-1:2000

	IHC 1:50-1:200 ICC/IF 1:50-1:200 FC 1:50
--	--

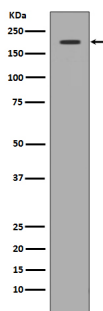
## Anti-Met (c-Met) Rabbit Monoclonal Antibody (M01488) Images



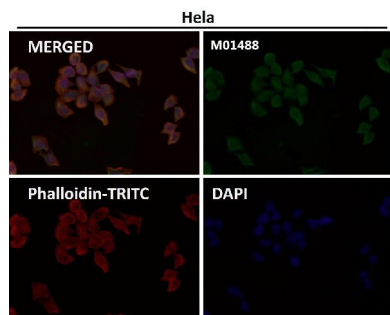
All lanes use the Antibody at 1:1K dilution for 1 hour at room temperature.



Immunofluorescent analysis of HT-29 cells, using Met (c-Met) Antibody .

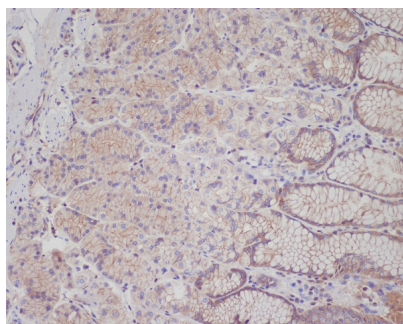


Western blot analysis of c-Met expression in 293 cell lysate.



Immunofluorescent analysis using the Antibody at 1:50 dilution.

Immunohistochemical analysis of paraffin-embedded human stomach, using Met (c-Met) Antibody .



## 1 Publications Citing This Product

1. PubMed ID: 23675455, Chen X, Ding G, Gao Q, Sun J, Zhang Q, Du L, Qiu Z, Wang C, Zheng F, Sun B, Ni J, Feng Z, Zhu J. Plos One. 2013 May 13;8(5):E63093. Doi: 10.1371/Journal.Pone.0063093. Print 2013. A Human Anti-C-Met Fab Fragment Conjugated With Doxorubicin As Targe...

Visit [bosterbio.com/anti-met-c-met-rabbit-monoclonal-antibody-m01488-boster.html](http://bosterbio.com/anti-met-c-met-rabbit-monoclonal-antibody-m01488-boster.html) to see all 1 publications.

## Submit a product review to Biocompare.com

Submit a review of this product to Biocompare.com to receive a \$20 Amazon.com giftcard! Your reviews help your fellow scientists make the right decisions. Thank you for your contribution.



Anti-Met (c-Met) Rabbit Monoclonal Antibody