

Anti-PSA (Prostate Specific Antigen) Rabbit Monoclonal Antibody, Clone#RM323

Catalog Number: M01505-2

Overview

Product Name	Anti-PSA (Prostate Specific Antigen) Rabbit Monoclonal Antibody, Clone#RM323
Reactive Species	Human
Description	Boster Bio Anti-PSA (Prostate Specific Antigen) Rabbit Monoclonal Antibody, Clone#RM323 (Catalog # M01505-2). Tested in IHC, WB, ELISA applications. This antibody reacts with Human.
Application	ELISA, IHC, WB
Clonality	Monoclonal RM323
Formulation	50% Glycerol/PBS with 1% BSA and 0.09% sodium azide
Storage Instructions	Store at -20°C for one year. Avoid repeated freeze-thaw cycles.
Host	Rabbit
Uniprot ID	P07288

Technical Details

Immunogen	Native PSA protein purified from human seminal fluid.
Cross Reactivity	This antibody reacts to native human PSA (Prostate Specific Antigen), including both free (unbound) form and in a complex with ACT (alpha 1-antichymotrypsin). It may react to reduced PSA at a higher concentration.
Isotype	Rabbit IgG
Form	Liquid
Concentration	0.5-1mg/ml, actual concentration vary by lot. Use suggested dilution ratio to decide dilution procedure.
Purification	Protein A affinity purified from an animal origin-free culture supernatant
Suggested Dilutions	<p>Dilute the sample so that the expected range of concentrations fall within the detection range of this kit.</p> <p>If the expected range of concentration is unknown, a pilot test should be conducted to decide the optimal dilution ratio for your samples.</p> <p>Some PubMed article(s) citing the expression level of this target are as follows:</p> <p>Boster Bio's internal QC testing used:</p> <p>Immunohistochemistry (IHC): 1:500-1:1000 dilution</p> <p>WB (WB-Non-Reduced): 1:1000-1:2500 dilution</p> <p>ELISA: 1:100-1:5000 dilution</p>

--	--

Anti-PSA (Prostate Specific Antigen) Rabbit Monoclonal Antibody, Clone#RM323 (M01505-2) Images

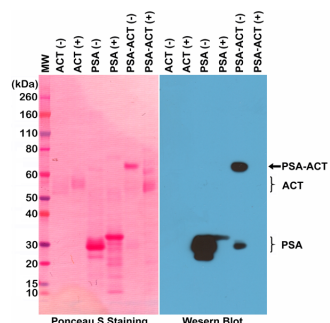


Figure 1. Western Blotting result
Western Blot of PSA (purified from human seminal fluid), ACT (alpha 1-antichymotrypsin, from human plasma), and PSA-ACT complex, under non-reduced (-) or reduced (+) conditions, using anti-PSA rabbit monoclonal antibody (Clone RM323) at a 1:2,500 dilution.

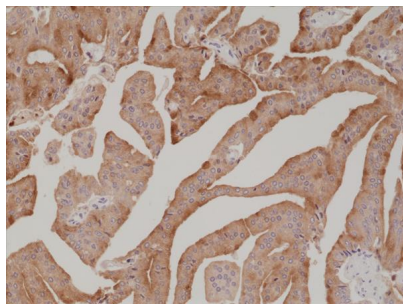


Figure 2. IHC result
Immunohistochemical staining of formalin fixed and paraffin embedded human prostate cancer tissue section using anti-PSA rabbit monoclonal antibody (Clone RM323) at a 1:1,000 dilution.

Submit a product review to Biocompare.com

Submit a review of this product to Biocompare.com to receive a \$20 Amazon.com giftcard! Your reviews help your fellow scientists make the right decisions. Thank you for your contribution.



Anti-PSA (Prostate Specific Antigen) Rabbit Monoclonal Antibody, Clone#RM323