

## Anti-Prostate Specific Antigen (PSA) Monoclonal Antibody

Catalog Number: M01505

### About KLK3

Recognizes a single protein of 33-34kDa, identified as the prostate specific antigen (PSA). This monoclonal antibody is highly specific to PSA and stains prostatic secretory and ductal epithelium in both normal and neoplastic tissues. PSA is a chymotrypsin-like serine protease (kallikrein family) exclusively produced by the prostate epithelium, and abundant in seminal fluid. PSA can be detected in the sera of patients with prostatic carcinoma. It is predominantly complexed to a liver-derived serine protease inhibitor, alpha-1-antichymotrypsin (ACT). A higher proportion of serum PSA is complexed to ACT in prostate cancer than in benign prostate hyperplasia. This monoclonal antibody makes an excellent pair with MAb A67-B/E3 for PSA tests.

### Overview

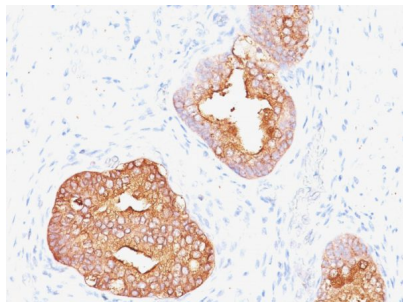
Product Name	Anti-Prostate Specific Antigen (PSA) Monoclonal Antibody
Reactive Species	Human, Cat
Description	Boster Bio Anti-Prostate Specific Antigen (PSA) Monoclonal Antibody (Catalog # M01505). Tested in Flow Cytometry, IF, IHC applications. This antibody reacts with Human, Cat.
Conjugate	Biotin
Application	Flow Cytometry, IF, IHC
Clonality	Monoclonal Clone: 1A7
Formulation	Prepared in 10mM PBS with 0.05% BSA & 0.05% azide. Also available WITHOUT BSA & azide at 1.0mg/ml.
Storage Instructions	Antibody with azide - store at 2 to 8°C. Antibody without azide - store at -20 to -80°C. Antibody is stable for 24 months. Non-hazardous. No MSDS required.
Host	Mouse
Uniprot ID	P07288

### Technical Details

Immunogen	PSA (p30) from human sperm plasma
Predicted Reactive Species	Pig, Rabbit
Cross Reactivity	Does not cross-react with primate, avian or amphibian GR.
Isotype	IgG1, kappa
Form	Liquid

Concentration	Purified antibody with BSA and azide at 200ug/ml
Purification	200ug/ml of antibody purified from Bioreactor Concentrate by Protein A/G.
Suggested Dilutions	<p>Dilute the sample so that the expected range of concentrations fall within the detection range of this kit.</p> <p>If the expected range of concentration is unknown, a pilot test should be conducted to decide the optimal dilution ratio for your samples.</p> <p>Some PubMed article(s) citing the expression level of this target are as follows:</p> <p>Boster Bio's internal QC testing used:</p> <p>Flow Cytometry (1-2ug/million cells)</p> <p>Immunofluorescence (1-2ug/ml)</p> <p>Immunohistochemistry (Formalin-fixed) (1-2ug/ml for 30 minutes at RT) (Staining of formalin-fixed tissues requires heating tissue sections in 10mM Tris with 1mM EDTA, pH 9.0, for 45 min at 95&amp;degC followed by cooling at RT for 20 minutes)</p> <p>Optimal dilution for a specific application should be determined.</p>

## Anti-Prostate Specific Antigen (PSA) Monoclonal Antibody (M01505) Images



Formalin-fixed, paraffin-embedded human Prostate Carcinoma stained with Anti-Prostate Specific Antigen Mouse Monoclonal Antibody (1A7).

### Submit a product review to Biocompare.com

Submit a review of this product to Biocompare.com to receive a \$20 Amazon.com giftcard! Your reviews help your fellow scientists make the right decisions. Thank you for your contribution.



Anti-Prostate Specific Antigen (PSA) Monoclonal Antibody