

## Anti-CD31 PECAM1 Rabbit Monoclonal Antibody

Catalog Number: M01513-2

### About PECAM1

Furin is likely to represent the ubiquitous endoprotease activity within constitutive secretory pathways and capable of cleavage at the RX (K/R) R consensus motif.

### Overview

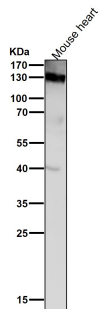
Product Name	Anti-CD31 PECAM1 Rabbit Monoclonal Antibody
Reactive Species	Human
Description	Boster Bio Anti-CD31 PECAM1 Rabbit Monoclonal Antibody catalog # M01513-2. Tested in WB, IHC, Flow Cytometry applications. This antibody reacts with Human.
Application	Flow Cytometry, IHC, WB
Clonality	Monoclonal DAI-16
Formulation	Rabbit IgG in phosphate buffered saline, pH 7.4, 150mM NaCl, 0.02% sodium azide and 50% glycerol, 0.4-0.5mg/ml BSA.
Storage Instructions	Store at -20°C for one year. For short term storage and frequent use, store at 4°C for up to one month. Avoid repeated freeze-thaw cycles.
Host	Rabbit
Uniprot ID	P16284

### Technical Details

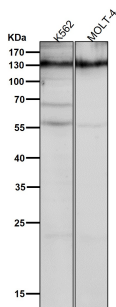
Immunogen	A synthesized peptide derived from human CD31
Isotype	Rabbit IgG
Form	Liquid
Concentration	Actual concentration vary by lot. Use suggested dilution ratio to decide dilution procedure.
Purification	Affinity-chromatography
Suggested Dilutions	Dilute the sample so that the expected range of concentrations fall within the detection range of this kit. If the expected range of concentration is unknown, a pilot test should be conducted to decide the optimal dilution ratio for your samples. Some PubMed article(s) citing the expression level of this target are as follows: Boster Bio's internal QC testing used: WB 1:500-1:2000

	IHC 1:50-1:200 FC 1:50
--	---------------------------

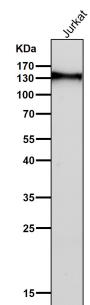
## Anti-CD31 PECAM1 Rabbit Monoclonal Antibody (M01513-2) Images



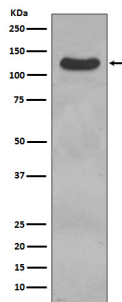
All lanes use the Antibody at 1:5K dilution for 1 hour at room temperature.



All lanes use the Antibody at 1:5K dilution for 1 hour at room temperature.

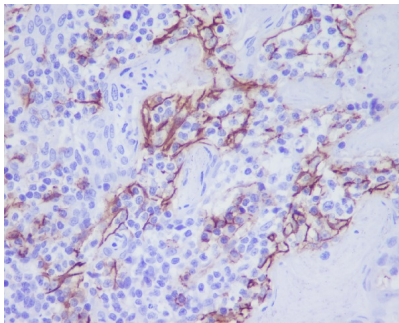
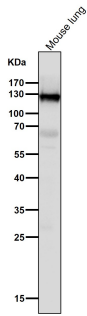


All lanes use the Antibody at 1:5K dilution for 1 hour at room temperature.



Western blot analysis of CD31 expression in THP1 cell lysate.

All lanes use the Antibody at 1:5K dilution for 1 hour at room temperature.



Immunohistochemical analysis of paraffin-embedded human tonsil, using CD31 Antibody.

## 10 Publications Citing This Product

1. PubMed ID: 30008838, EPCR promotes MGC803 human gastric cancer cell tumor angiogenesis in vitro through activating ERK1/2 and AKT in a PAR1-dependent manner
2. PubMed ID: 27811372, The induction of autophagy against mitochondria-mediated apoptosis in lung cancer cells by a ruthenium (II) imidazole complex
3. PubMed ID: 24312143, Wu Q, Chang Y, Zhang L, Zhang Y, Tian T, Feng G, Zhou S, Zheng Q, Han F, Huang F. J Cancer. 2013 Nov 21;4(9):727-35. Doi: 10.7150/Jca.7576. Ecollection 2013. Sprk1 Dissimilarly Impacts On The Growth, Metastasis, Chemosensitivity And Angiogenesis O...

Visit [bosterbio.com/anti-cd31-rabbit-monoclonal-antibody-m01513-2-boster.html](http://bosterbio.com/anti-cd31-rabbit-monoclonal-antibody-m01513-2-boster.html) to see all 10 publications.

## Submit a product review to Biocompare.com

Submit a review of this product to Biocompare.com to receive a \$20 Amazon.com giftcard! Your reviews help your fellow scientists make the right decisions. Thank you for your contribution.



Anti-CD31 PECAM1 Rabbit Monoclonal Antibody