

Anti-Matrix metalloproteinase-12 (MMP-12) Rabbit Monoclonal Antibody, Clone#RM381

Catalog Number: M01520-1

Overview

Product Name	Anti-Matrix metalloproteinase-12 (MMP-12) Rabbit Monoclonal Antibody, Clone#RM381
Reactive Species	Human
Description	Boster Bio Anti-Matrix metalloproteinase-12 (MMP-12) Rabbit Monoclonal Antibody, Clone#RM381 (Catalog # M01520-1). Tested in IHC, WB applications. This antibody reacts with Human.
Application	IHC, WB
Clonality	Monoclonal RM381
Formulation	50% Glycerol/PBS with 1% BSA and 0.09% sodium azide
Storage Instructions	Store at -20°C for one year. Avoid repeated freeze-thaw cycles.
Host	Rabbit
Uniprot ID	P39900

Technical Details

Immunogen	A peptide corresponding to C-terminus of human Matrix metalloproteinase-12 (MMP-12)
Cross Reactivity	This antibody reacts to human Matrix metalloproteinase-12 (MMP-12)
Isotype	Rabbit IgG
Form	Liquid
Concentration	0.5-1mg/ml, actual concentration vary by lot. Use suggested dilution ratio to decide dilution procedure.
Purification	Protein A affinity purified from an animal origin-free culture supernatant
Suggested Dilutions	<p>Dilute the sample so that the expected range of concentrations fall within the detection range of this kit.</p> <p>If the expected range of concentration is unknown, a pilot test should be conducted to decide the optimal dilution ratio for your samples.</p> <p>Some PubMed article(s) citing the expression level of this target are as follows:</p> <p>Boster Bio's internal QC testing used:</p> <p>Immunohistochemistry (IHC): 1:1000-1:2500 dilution</p> <p>WB: 1:200-1:1000 dilution.</p>

Anti-Matrix metalloproteinase-12 (MMP-12) Rabbit Monoclonal Antibody, Clone#RM381 (M01520-1) Images

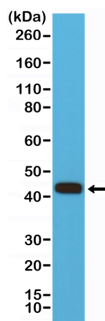


Figure 1. Western Blotting result
Western Blot of HEK 293 cells lysate using anti-MMP-12 rabbit monoclonal antibody (Clone RM381) at a 1:500 dilution.

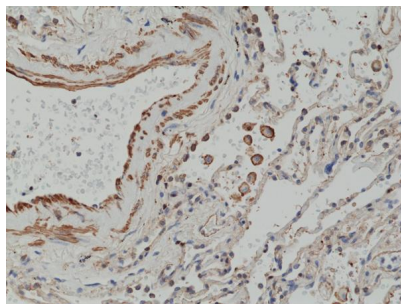


Figure 2. IHC result
Immunohistochemical staining of formalin fixed and paraffin embedded human lung cancer tissue section using anti-MMP-12 rabbit monoclonal antibody (Clone RM381) at a 1:2500 dilution.

Submit a product review to Biocompare.com

Submit a review of this product to Biocompare.com to receive a \$20 Amazon.com giftcard! Your reviews help your fellow scientists make the right decisions. Thank you for your contribution.



Anti-Matrix metalloproteinase-12 (MMP-12) Rabbit Monoclonal Antibody, Clone#RM381