

## Anti-LC3B MAP1LC3B Rabbit Monoclonal Antibody

Catalog Number: M01524

### About MAP1LC3B

Furin is likely to represent the ubiquitous endoprotease activity within constitutive secretory pathways and capable of cleavage at the RX (K/R) R consensus motif.

### Overview

Product Name	Anti-LC3B MAP1LC3B Rabbit Monoclonal Antibody
Reactive Species	Human, Mouse, Rat
Description	Boster Bio Anti-LC3B MAP1LC3B Rabbit Monoclonal Antibody catalog # M01524. Tested in WB, ICC/IF, IP applications. This antibody reacts with Human, Mouse, Rat.
Application	IP, IF, ICC, WB
Clonality	Monoclonal IEC-13
Formulation	Rabbit IgG in phosphate buffered saline, pH 7.4, 150mM NaCl, 0.02% sodium azide and 50% glycerol, 0.4-0.5mg/ml BSA.
Storage Instructions	Store at -20°C for one year. For short term storage and frequent use, store at 4°C for up to one month. Avoid repeated freeze-thaw cycles.
Host	Rabbit
Uniprot ID	Q9GZQ8

### Technical Details

Immunogen	A synthesized peptide derived from human LC3B
Isotype	Rabbit IgG
Form	Liquid
Concentration	Actual concentration vary by lot. Use suggested dilution ratio to decide dilution procedure.
Purification	Affinity-chromatography
Suggested Dilutions	<p>Dilute the sample so that the expected range of concentrations fall within the detection range of this kit.</p> <p>If the expected range of concentration is unknown, a pilot test should be conducted to decide the optimal dilution ratio for your samples.</p> <p>Some PubMed article(s) citing the expression level of this target are as follows:</p> <p>Boster Bio's internal QC testing used:</p> <p>WB 1:500-1:2000</p>

	ICC/IF 1:50-1:200 IP 1:50
--	------------------------------

## Anti-LC3B MAP1LC3B Rabbit Monoclonal Antibody (M01524) Images

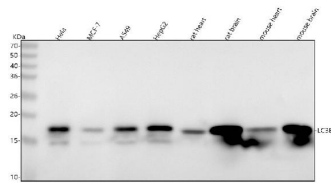
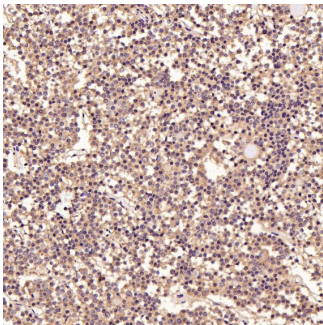


Figure 1. Western blot analysis of LC3B using anti-LC3B antibody (M01524).

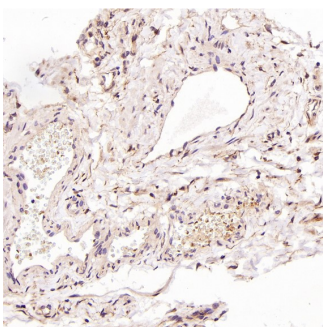
Electrophoresis was performed on a 5-20% SDS-PAGE gel at 70V (Stacking gel) / 90V (Resolving gel) for 2-3 hours. The sample well of each lane was loaded with 30 ug of sample under reducing conditions.

Lane 1: human Hela whole cell lysates,  
Lane 2: human MCF-7 whole cell lysates,  
Lane 3: human A549 whole cell lysates,  
Lane 4: human HepG2 whole cell lysates,  
Lane 5: rat heart tissue lysates,  
Lane 6: rat brain tissue lysates,  
Lane 7: mouse heart tissue lysates,  
Lane 8: mouse brain tissue lysates.

After electrophoresis, proteins were transferred to a nitrocellulose membrane at 150 mA for 50-90 minutes. Blocked the membrane with 5% non-fat milk/TBS for 1.5 hour at RT. The membrane was incubated with rabbit anti-LC3B antigen affinity purified monoclonal antibody (Catalog # M01524) at 1:500 overnight at 4°C, then washed with TBS-0.1%Tween 3 times with 5 minutes each and probed with a goat anti-rabbit IgG-HRP secondary antibody at a dilution of 1:500 for 1.5 hour at RT. The signal is developed using an Enhanced Chemiluminescent detection (ECL) kit (Catalog # EK1002) with Tanon 5200 system. A specific band was detected for LC3B at approximately 18 kDa. The expected band size for LC3B is at 16 kDa.

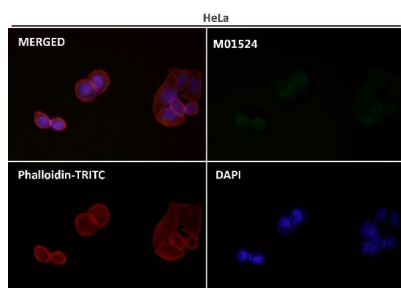
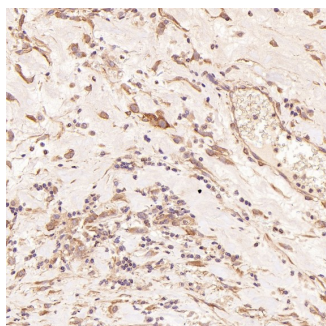


Immunohistochemical analysis of paraffin-embedded Human pituitary tumor, using the Antibody at 1:50 dilution.

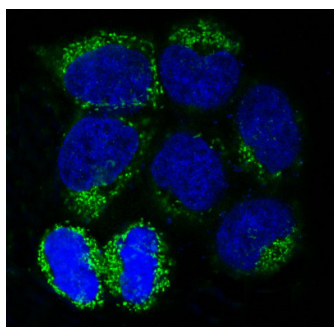


Immunohistochemical analysis of paraffin-embedded Human testis cancer, using the Antibody at 1:200 dilution.

Immunohistochemical analysis of paraffin-embedded Human esophageal carcinoma, using the Antibody at 1:50 dilution.



Immunofluorescent analysis using the Antibody at 1:150 dilution.



Immunofluorescent analysis of HeLa cells treated with chloroquine, using LC3B Antibody.

## 4 Publications Citing This Product

1. PubMed ID: -, Zhang Tao, Xiaoqing Zhou, Yan Zhang, Wenfeng Pu, Yi Yang, Fuxia Wei, Qian Zhou, Lin Zhang, Zhonghan Du, Ji Wu, "Xi Lei San Attenuates Dextran Sulfate Sodium-Induced Colitis in Rats and TNF-alpha-Stimulated Colitis in CACO2 Cells: Involvement of the NLRP3 Inflammasome and Autophagy", Mediators of Inflammation, vol. 2021, Article ID 1610251, 12 pages, 2021. <https://doi.org/10.1155/2021/1610251>
2. PubMed ID: -, Xiaodong Zhou, Hongsheng Ouyang, Daxin Pang et al. Pathological Alterations in the Gastrointestinal Tract of a Porcine Model of DMD, 08 March 2021, PREPRINT (Version 1) available at Research Square [<https://doi.org/10.21203/rs.3.rs-267849/v1>]
3. PubMed ID: 28031531, Overendocytosis of superparamagnetic iron oxide particles increases apoptosis and triggers autophagic cell death in human osteosarcoma cell under a spinning magnetic field

Visit [bosterbio.com/anti-lc3b-rabbit-monoclonal-antibody-m01524-boster.html](https://bosterbio.com/anti-lc3b-rabbit-monoclonal-antibody-m01524-boster.html) to see all 4 publications.

## Submit a product review to Biocompare.com

Submit a review of this product to Biocompare.com to receive a \$20 Amazon.com giftcard! Your reviews help your fellow scientists make the right decisions. Thank you for your contribution.



## Anti-LC3B MAP1LC3B Rabbit Monoclonal Antibody