

## Anti-MAP1LC3A/Lc3A Rabbit Monoclonal Antibody

Catalog Number: M01543-1

### About MAP1LC3A

Furin is likely to represent the ubiquitous endoprotease activity within constitutive secretory pathways and capable of cleavage at the RX (K/R) R consensus motif.

### Overview

Product Name	Anti-MAP1LC3A/Lc3A Rabbit Monoclonal Antibody
Reactive Species	Human, Mouse, Rat
Description	Boster Bio Anti-MAP1LC3A/Lc3A Rabbit Monoclonal Antibody catalog # M01543-1. Tested in WB, IHC, ICC/IF, IP, Flow Cytometry applications. This antibody reacts with Human, Mouse, Rat.
Application	Flow Cytometry, IP, IF, IHC, ICC, WB
Clonality	Monoclonal EOD-13
Formulation	Rabbit IgG in phosphate buffered saline, pH 7.4, 150mM NaCl, 0.02% sodium azide and 50% glycerol, 0.4-0.5mg/ml BSA.
Storage Instructions	Store at -20°C for one year. For short term storage and frequent use, store at 4°C for up to one month. Avoid repeated freeze-thaw cycles.
Host	Rabbit
Uniprot ID	Q9H492

### Technical Details

Immunogen	A synthesized peptide derived from human MAP1LC3A
Isotype	Rabbit IgG
Form	Liquid
Concentration	Actual concentration vary by lot. Use suggested dilution ratio to decide dilution procedure.
Purification	Affinity-chromatography
Suggested Dilutions	Dilute the sample so that the expected range of concentrations fall within the detection range of this kit. If the expected range of concentration is unknown, a pilot test should be conducted to decide the optimal dilution ratio for your samples. Some PubMed article(s) citing the expression level of this target are as follows: Boster Bio's internal QC testing used: WB 1:500-1:2000

	IHC 1:50-1:200 ICC/IF 1:50-1:200 IP 1:50 FC 1:50
--	---

## Anti-MAP1LC3A/Lc3A Rabbit Monoclonal Antibody (M01543-1) Images

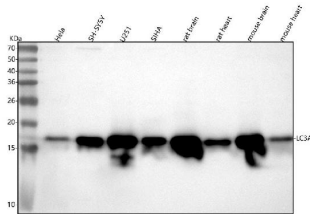
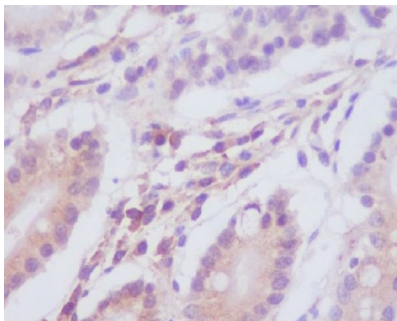


Figure 1. Western blot analysis of MAP1LC3A using anti-MAP1LC3A antibody (M01543-1).

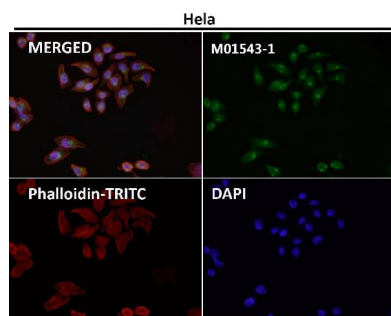
Electrophoresis was performed on a 5-20% SDS-PAGE gel at 70V (Stacking gel) / 90V (Resolving gel) for 2-3 hours. The sample well of each lane was loaded with 30 ug of sample under reducing conditions.

Lane 1: human Hela whole cell lysates,  
Lane 2: human SH-SY5Y whole cell lysates,  
Lane 3: human U251 whole cell lysates,  
Lane 4: human SiHa whole cell lysates,  
Lane 5: rat brain tissue lysates,  
Lane 6: rat heart tissue lysates,  
Lane 7: mouse brain tissue lysates,  
Lane 8: mouse heart tissue lysates.

After electrophoresis, proteins were transferred to a nitrocellulose membrane at 150 mA for 50-90 minutes. Blocked the membrane with 5% non-fat milk/TBS for 1.5 hour at RT. The membrane was incubated with rabbit anti-MAP1LC3A antigen affinity purified monoclonal antibody (Catalog # M01543-1) at 1:500 overnight at 4°C, then washed with TBS-0.1%Tween 3 times with 5 minutes each and probed with a goat anti-rabbit IgG-HRP secondary antibody at a dilution of 1:500 for 1.5 hour at RT. The signal is developed using an Enhanced Chemiluminescent detection (ECL) kit (Catalog # EK1002) with Tanon 5200 system. A specific band was detected for MAP1LC3A at approximately 18 kDa. The expected band size for MAP1LC3A is at 14 kDa.

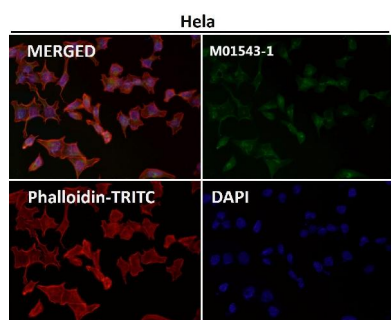


Immunohistochemical analysis of paraffin-embedded human stomach, using MAP1LC3A Antibody.

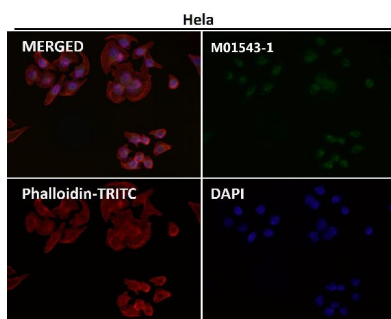


Immunofluorescent analysis using the Antibody at 1:50 dilution.

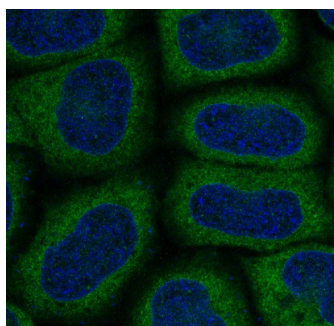
Immunofluorescent analysis using the Antibody at 1:150



dilution.



Immunofluorescent analysis using the Antibody at 1:500 dilution.



Immunofluorescent analysis of HeLa cells, using MAP1LC3A Antibody .

## 1 Publications Citing This Product

1. PubMed ID: 33285262, Wu K,Yue J,Shen K,He J,Zhu G,Liu S,Zhang C,Yang H. Increased Expression of Fibroblast Growth Factor 13 in Cortical Lesions of the Focal Cortical Dysplasia. Brain Res Bull. 2020 Dec 4:S0361-9230(20)30710-3.doi: 10.1016/j.brainresbull.2020.11.023.Epub ahead

Visit [bosterbio.com/anti-map1lc3a-rabbit-monoclonal-antibody-m01543-1-boster.html](https://bosterbio.com/anti-map1lc3a-rabbit-monoclonal-antibody-m01543-1-boster.html) to see all 1 publications.

## Submit a product review to Biocompare.com

Submit a review of this product to Biocompare.com to receive a \$20 Amazon.com giftcard! Your reviews help your fellow scientists make the right decisions. Thank you for your contribution.



Anti-MAP1LC3A/Lc3A Rabbit Monoclonal Antibody