

## Anti-MAP1LC3A/Lc3A Rabbit Monoclonal Antibody

Catalog Number: M01543

### About MAP1LC3A

Furin is likely to represent the ubiquitous endoprotease activity within constitutive secretory pathways and capable of cleavage at the RX (K/R) R consensus motif.

### Overview

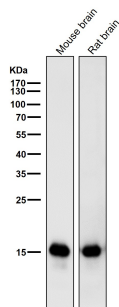
Product Name	Anti-MAP1LC3A/Lc3A Rabbit Monoclonal Antibody
Reactive Species	Human, Mouse, Rat
Description	Boster Bio Anti-MAP1LC3A/Lc3A Rabbit Monoclonal Antibody catalog # M01543. Tested in WB, IHC, ICC/IF, IP applications. This antibody reacts with Human, Mouse, Rat.
Application	IP, IF, IHC, ICC, WB
Clonality	Monoclonal GCH-13
Formulation	Rabbit IgG in phosphate buffered saline, pH 7.4, 150mM NaCl, 0.02% sodium azide and 50% glycerol, 0.4-0.5mg/ml BSA.
Storage Instructions	Store at -20°C for one year. For short term storage and frequent use, store at 4°C for up to one month. Avoid repeated freeze-thaw cycles.
Host	Rabbit
Uniprot ID	Q9H492

### Technical Details

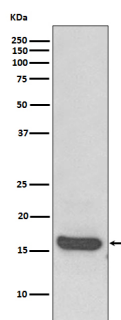
Immunogen	A synthesized peptide derived from human MAP1LC3A
Isotype	Rabbit IgG
Form	Liquid
Concentration	Actual concentration vary by lot. Use suggested dilution ratio to decide dilution procedure.
Purification	Affinity-chromatography
Suggested Dilutions	<p>Dilute the sample so that the expected range of concentrations fall within the detection range of this kit.</p> <p>If the expected range of concentration is unknown, a pilot test should be conducted to decide the optimal dilution ratio for your samples.</p> <p>Some PubMed article(s) citing the expression level of this target are as follows:</p> <p>Boster Bio's internal QC testing used:</p> <p>WB 1:5000-1:20000</p>

	IHC 1:50-1:200 ICC/IF 1:50-1:200 IP 1:50
--	--

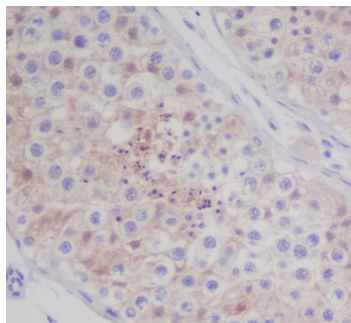
## Anti-MAP1LC3A/Lc3A Rabbit Monoclonal Antibody (M01543) Images



All lanes use the Antibody at 1:1W dilution for 1 hour at room temperature.



Western blot analysis of MAP1LC3A expression in Human brain lysate.



Immunohistochemical analysis of paraffin-embedded human testis, using MAP1LC3A Antibody.

### Submit a product review to Biocompare.com

Submit a review of this product to Biocompare.com to receive a \$20 Amazon.com giftcard! Your reviews help your fellow scientists make the right decisions. Thank you for your contribution.



Anti-MAP1LC3A/Lc3A Rabbit Monoclonal Antibody