

## Anti-CD22 / BL-CAM Monoclonal Antibody

Catalog Number: M01572

### About CD22

Recognizes a protein of 130-140kDa, identified as CD22 (also known as BL-CAM). CD22 expression is restricted to normal and neoplastic B cells and is absent from other haemopoietic cell types. In B-cell ontogeny, CD22 is first expressed in the cytoplasm of pro-B and pre-B cells, and on the surface as B cells mature to become IgD+. It is not expressed by plasma cells, CD22 is found highly expressed in follicular mantle and marginal zone B-cells, and while germinal center B-cells are relatively weak. CD22 is a member of the immunoglobulin superfamily and serves as an adhesion receptor for sialic acid-bearing ligands expressed on erythrocytes and all leukocyte classes. It also associates with tyrosine kinases and play a role in signal transduction and B-cell activation.

### Overview

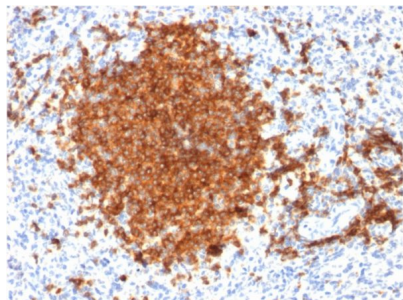
Product Name	Anti-CD22 / BL-CAM Monoclonal Antibody
Reactive Species	Human
Description	Boster Bio Anti-CD22 / BL-CAM Monoclonal Antibody (Catalog # M01572). Tested in ELISA, Flow Cytometry, WB, IF, IHC applications. This antibody reacts with Human.
Conjugate	Biotin
Application	ELISA, Flow Cytometry, IF, IHC, WB
Clonality	Monoclonal Clone: BLCAM/1795
Formulation	Prepared in 10mM PBS with 0.05% BSA & 0.05% azide. Also available WITHOUT BSA & azide at 1.0mg/ml.
Storage Instructions	Antibody with azide - store at 2 to 8°C. Antibody without azide - store at -20 to -80°C. Antibody is stable for 24 months. Non-hazardous. No MSDS required.
Host	Mouse
Uniprot ID	P20273

### Technical Details

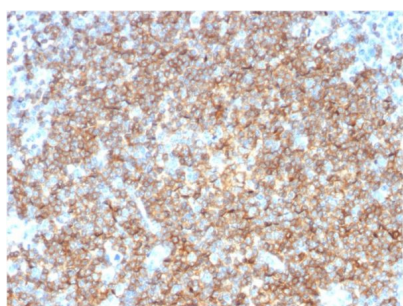
Immunogen	Recombinant fragment (around aa52-178) of human BL-CAM/CD22 protein (exact sequence is proprietary)
Predicted Reactive Species	Pig, Rabbit
Cross Reactivity	Does not cross-react with primate, avian or amphibian GR.
Isotype	IgG1, kappa
Form	Liquid

Concentration	Purified antibody with BSA and azide at 200ug/ml
Purification	200ug/ml of antibody purified from Bioreactor Concentrate by Protein A/G.
Suggested Dilutions	<p>Dilute the sample so that the expected range of concentrations fall within the detection range of this kit.</p> <p>If the expected range of concentration is unknown, a pilot test should be conducted to decide the optimal dilution ratio for your samples.</p> <p>Some PubMed article(s) citing the expression level of this target are as follows:</p> <p>Boster Bio's internal QC testing used:</p> <p>ELISA (Use Ab at 2-4ug/ml for coating) (Order Ab without BSA)</p> <p>Flow Cytometry (1-2ug/million cells)</p> <p>Western Blot (1-2ug/ml)</p> <p>Immunofluorescence (1-2ug/ml)</p> <p>Immunohistochemistry (Formalin-fixed) (1-2ug/ml for 30 minutes at RT)(Staining of formalin-fixed tissues requires heating tissue sections in 10mM Tris buffer with 1mM EDTA, pH 9.0, for 45 min at 95&amp;degC followed by cooling at RT for 20 minutes)Optimal dilution for a specific application should be determined.</p>

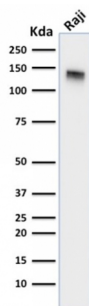
## Anti-CD22 / BL-CAM Monoclonal Antibody (M01572) Images



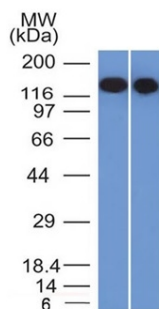
Formalin-fixed, paraffin-embedded human Spleen stained with Anti-CD22-Monospecific Mouse Monoclonal Antibody (BLCAM/1795).



Formalin-fixed, paraffin-embedded human Tonsil stained with Anti-CD22-Monospecific Mouse Monoclonal Antibody (BLCAM/1795).

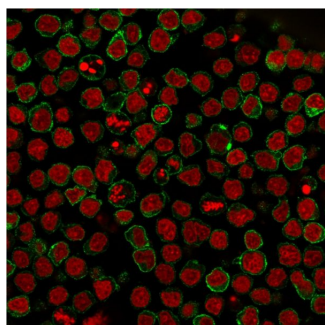
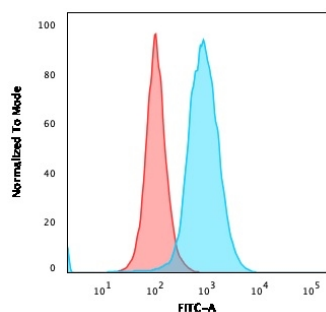


Western Blot Analysis of Raji cell lysate using Anti-CD22-Monospecific Mouse Monoclonal Antibody (BLCAM/1795).



Western Blot analysis of Raji and Ramos cell lysates using Anti-CD22-Monospecific Mouse Monoclonal Antibody (BLCAM/1795).

Flow Cytometric analysis of paraformaldehyde-fixed MOLT4 cells. Anti-CD22-Monospecific Mouse Monoclonal Antibody (BLCAM/1795) followed by goat anti-Mouse IgG-CF488 (Blue); Isotype Control (Red).



Immunofluorescent staining of paraformaldehyde-fixed Ramos cells using Anti-CD22-Monospecific Mouse Monoclonal Antibody (BLCAM/1795) followed by goat anti-Mouse IgG conjugated to CF488 (green). Nuclei are stained with Reddot.

## Submit a product review to Biocompare.com

Submit a review of this product to Biocompare.com to receive a \$20 Amazon.com giftcard! Your reviews help your fellow scientists make the right decisions. Thank you for your contribution.



Anti-CD22 / BL-CAM Monoclonal Antibody