

Anti-SNAP25 Rabbit Monoclonal Antibody

Catalog Number: M01625

About SNAP25

Furin is likely to represent the ubiquitous endoprotease activity within constitutive secretory pathways and capable of cleavage at the RX (K/R) R consensus motif.

Overview

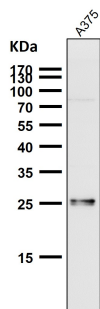
Product Name	Anti-SNAP25 Rabbit Monoclonal Antibody
Reactive Species	Human, Mouse, Rat
Description	Boster Bio Anti-SNAP25 Rabbit Monoclonal Antibody catalog # M01625. Tested in WB, ICC/IF, IP applications. This antibody reacts with Human, Mouse, Rat.
Application	IP, IF, ICC, WB
Clonality	Monoclonal ABHE-19
Formulation	Rabbit IgG in phosphate buffered saline, pH 7.4, 150mM NaCl, 0.02% sodium azide and 50% glycerol, 0.4-0.5mg/ml BSA.
Storage Instructions	Store at -20°C for one year. For short term storage and frequent use, store at 4°C for up to one month. Avoid repeated freeze-thaw cycles.
Host	Rabbit
Uniprot ID	P60880

Technical Details

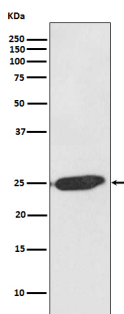
Immunogen	A synthesized peptide derived from human SNAP25
Isotype	Rabbit IgG
Form	Liquid
Concentration	Actual concentration vary by lot. Use suggested dilution ratio to decide dilution procedure.
Purification	Affinity-chromatography
Suggested Dilutions	Dilute the sample so that the expected range of concentrations fall within the detection range of this kit. If the expected range of concentration is unknown, a pilot test should be conducted to decide the optimal dilution ratio for your samples. Some PubMed article(s) citing the expression level of this target are as follows: Boster Bio's internal QC testing used: WB 1:500-1:2000

	ICC/IF 1:50-1:200 IP 1:50
--	------------------------------

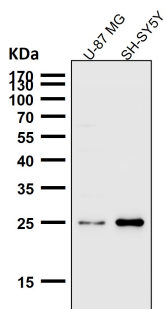
Anti-SNAP25 Rabbit Monoclonal Antibody (M01625) Images



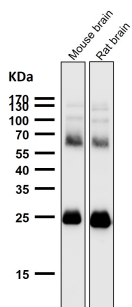
All lanes use the Antibody at 1:2K dilution for 1 hour at room temperature.



Western blot analysis of SNAP25 expression in SH-SY5Y cell lysate.

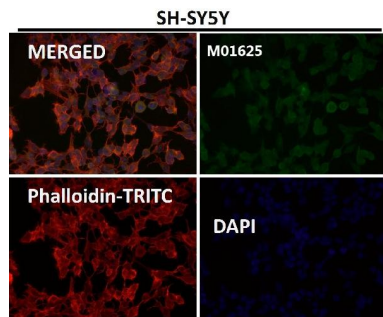
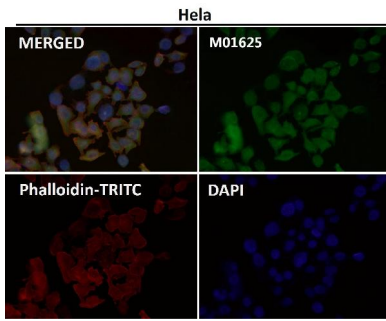


All lanes use the Antibody at 1:2K dilution for 1 hour at room temperature.

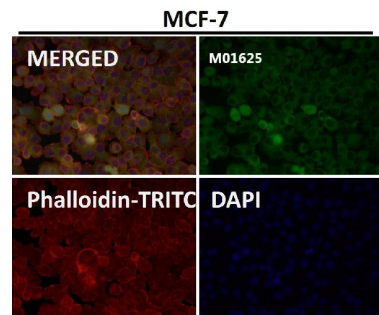


All lanes use the Antibody at 1:2K dilution for 1 hour at room temperature.

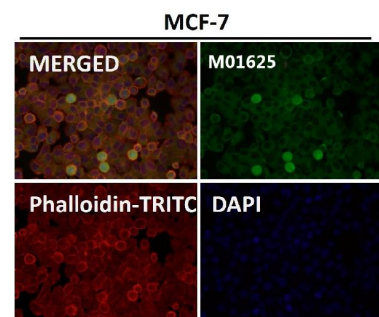
Immunofluorescent analysis using the Antibody at 1:50 dilution.



Immunofluorescent analysis using the Antibody at 1:50 dilution.



Immunofluorescent analysis using the Antibody at 1:50 dilution.



Immunofluorescent analysis using the Antibody at 1:50 dilution.

2 Publications Citing This Product

1. PubMed ID: 32930942, Guan Y,Chen X,Zhao B,Shi Y,Han F.What Happened in the Hippocampal Axon in a Rat Model of Posttraumatic Stress Disorder.Cell Mol Neurobiol.2020 Sep 15.doi:10.1007/s10571-020-00960-w.Epub ahead of print.PMID:32930942.
2. PubMed ID: 28761431, Zhong ZQ, Xiang Y, Hu X, Wang YC, Zeng X, Wang XM, Xia QJ, Wang TH, Zhang X. Neural Regen Res. 2017 Jun;12(6):969-976. doi: 10.4103/1673-5374.208592. Synaptosomal-associated protein 25 may be an intervention target for improving sensory and locomo...

Visit [bosterbio.com/anti-snap25-rabbit-monoclonal-antibody-m01625-boster.html](https://www.bosterbio.com/anti-snap25-rabbit-monoclonal-antibody-m01625-boster.html) to see all 2 publications.

Submit a product review to Biocompare.com

Submit a review of this product to Biocompare.com to receive a \$20 Amazon.com giftcard! Your reviews help your fellow scientists make the right decisions. Thank you for your contribution.



Anti-SNAP25 Rabbit Monoclonal Antibody