

Anti-MUC18 / CD146 / MCAM (Melanoma Cell Adhesion Molecule) Monoclonal Antibody

Catalog Number: M01683

About MCAM

The human Mel-CAM gene maps to chromosome 11q23 and encodes a trans-membrane glycoprotein, also designated MCAM, MUC 18 or CD146, that belongs to the immunoglobulin superfamily and functions as a Ca²⁺-independent cell adhesion molecule. Mel-CAM expression is restricted to advanced primary and metastatic melanomas and to cell lines of the neuroectodermal lineage, but not normal melanocytes. Mel-CAM is found on 80% of advanced primary human melanomas and correlates well with development of metastatic disease.

Overview

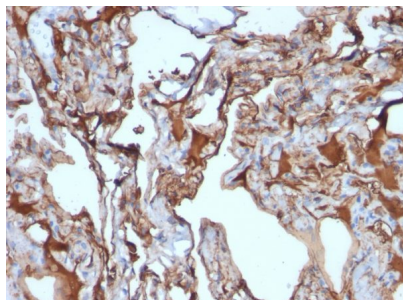
Product Name	Anti-MUC18 / CD146 / MCAM (Melanoma Cell Adhesion Molecule) Monoclonal Antibody
Reactive Species	Human
Description	Boster Bio Anti-MUC18 / CD146 / MCAM (Melanoma Cell Adhesion Molecule) Monoclonal Antibody (Catalog # M01683). Tested in Flow Cytometry, IF, IHC applications. This antibody reacts with Human.
Conjugate	Biotin
Application	Flow Cytometry, IF, IHC
Clonality	Monoclonal Clone: MUC18/1130
Formulation	Prepared in 10mM PBS with 0.05% BSA & 0.05% azide. Also available WITHOUT BSA & azide at 1.0mg/ml.
Storage Instructions	Antibody with azide - store at 2 to 8°C. Antibody without azide - store at -20 to -80°C. Antibody is stable for 24 months. Non-hazardous. No MSDS required.
Host	Mouse
Uniprot ID	P43121

Technical Details

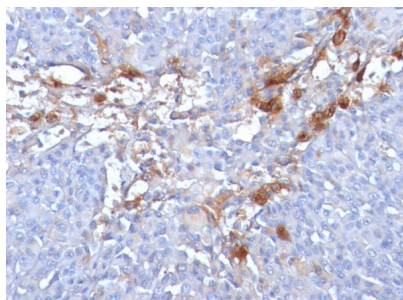
Immunogen	Recombinant full-length human MUC18 protein
Predicted Reactive Species	Pig, Rabbit
Cross Reactivity	Does not cross-react with primate, avian or amphibian GR.
Isotype	IgG1, kappa
Form	Liquid

Concentration	Purified antibody with BSA and azide at 200ug/ml
Purification	200ug/ml of antibody purified from Bioreactor Concentrate by Protein A/G.
Suggested Dilutions	<p>Dilute the sample so that the expected range of concentrations fall within the detection range of this kit.</p> <p>If the expected range of concentration is unknown, a pilot test should be conducted to decide the optimal dilution ratio for your samples.</p> <p>Some PubMed article(s) citing the expression level of this target are as follows:</p> <p>Boster Bio's internal QC testing used:</p> <p>Flow Cytometry (1-2ug/million cells)</p> <p>Immunofluorescence (1-2ug/ml)</p> <p>Immunohistochemistry (Formalin-fixed) (1-2ug/ml for 30 minutes at RT)(Staining of formalin-fixed tissues requires heating tissue sections in 1mM EDTA, pH 8.0, for 45 min at 95degC followed by cooling at RT for 20 minutes)Optimal dilution for a specific application should be determined.</p>

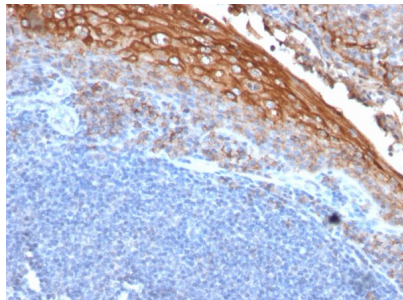
Anti-MUC18 / CD146 / MCAM (Melanoma Cell Adhesion Molecule) Monoclonal Antibody (M01683) Images



Formalin-fixed, paraffin-embedded human Melanoma stained with Anti-MUC18 Mouse Monoclonal Antibody (MUC18/1130).



Formalin-fixed, paraffin-embedded human Melanoma stained with Anti-MUC18 Mouse Monoclonal Antibody (MUC18/1130).



Formalin-fixed, paraffin-embedded human Tonsil stained with Anti-MUC18 Mouse Monoclonal Antibody (MUC18/1130).

Submit a product review to Biocompare.com

Submit a review of this product to Biocompare.com to receive a \$20 Amazon.com giftcard! Your reviews help your fellow scientists make the right decisions. Thank you for your contribution.



Anti-MUC18 / CD146 / MCAM (Melanoma Cell Adhesion Molecule) Monoclonal Antibody