

## Anti-Msx-1 Monoclonal Antibody

Catalog Number: M01701

### About MSX1

Bin1 is a conserved member of the BAR family of genes that have been implicated in diverse cellular processes including endocytosis, actin organization, programmed cell death, stress responses, and transcriptional control. The first mammalian BAR protein to be discovered, Amphiphysin I (AmphI), was identified in an immunoscreen for proteins associated with the plasma membranes of synaptic neurons, functions in the control of clathrin-dependent synaptic vesicle endocytosis. The mammalian Bin1 gene was first identified in a two hybrid screen for polypeptides that bind to the N-terminal Myc box 1 (MB1) portion of the c-Myc oncoprotein. Bin1 is similar to AmphI in overall structure, with an N-terminal BAR domain and a C-terminal SH3 domain. However, the Bin1 gene is more complex than the AmphI gene, encoding at least seven different splice variants that differ widely in subcellular localization, tissue distribution, and ascribed functions. Alternate splicing of the Bin1 gene results in ten transcript variants encoding different isoform. Bin1 is expressed ubiquitously in mammalian cells. Certain splice variants of Bin1 are expressed in the neurons, muscle cells or tumor cells. Bin1 may act as a cancer suppressor and inhibits malignant cell transformation. Studies in mouse suggest that this gene plays an important role in cardiac muscle development. Bin1 has also been implicated in Alzheimer disease and cardiac disease. Defects in Bin1 are the cause of centronuclear myopathy autosomal recessive; also known as autosomal recessive myotubular myopathy.

### Overview

Product Name	Anti-Msx-1 Monoclonal Antibody
Reactive Species	Human
Description	Boster Bio Anti-Msx-1 Monoclonal Antibody catalog # M01701. Tested in ELISA, WB applications. This antibody reacts with Human.
Application	ELISA, WB
Clonality	Monoclonal 5D11
Formulation	Ascitic fluid containing 0.03% sodium azide.
Storage Instructions	Store at -20°C for one year. For short term storage and frequent use, store at 4°C for up to one month. Avoid repeated freeze-thaw cycles.
Host	Mouse
Uniprot ID	P28360

### Technical Details

Immunogen	Purified recombinant fragment of human Msx-1 expressed in E. Coli.
Predicted Reactive Species	Chimpanzee
Isotype	IgG
Form	Liquid

Concentration	1 mg/ml
Purification	Affinity purification
Suggested Dilutions	<p>Dilute the sample so that the expected range of concentrations fall within the detection range of this kit.</p> <p>If the expected range of concentration is unknown, a pilot test should be conducted to decide the optimal dilution ratio for your samples.</p> <p>Some PubMed article(s) citing the expression level of this target are as follows:</p> <p>Boster Bio's internal QC testing used: WB 1:500-1:2000 ELISA 1:10000</p>

## Anti-Msx-1 Monoclonal Antibody (M01701) Images

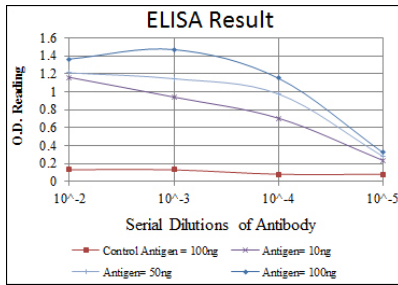


Figure 2. ELISA validation of MSX1 using Anti-Msx-1 Monoclonal Antibody (M01701).

ELISA analysis of Msx-1 antibody.

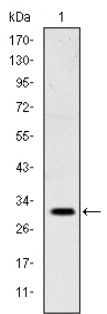


Figure 1. Western blotting validation for Anti-Msx-1 Monoclonal Antibody M01701

Western Blot (WB) analysis using Msx-1 Monoclonal Antibody against NTERA-2 cell lysate. Electrophoresis was performed on a SDS-PAGE gel. To determine SDS-PAGE gel concentration

## Submit a product review to Biocompare.com

Submit a review of this product to Biocompare.com to receive a \$20 Amazon.com giftcard! Your reviews help your fellow scientists make the right decisions. Thank you for your contribution.



Anti-Msx-1 Monoclonal Antibody