

Anti-EAAT2/GLT-1/SLC1A2 Rabbit Monoclonal Antibody

Catalog Number: M01713

About SLC1A2

Furin is likely to represent the ubiquitous endoprotease activity within constitutive secretory pathways and capable of cleavage at the RX (K/R) R consensus motif.

Overview

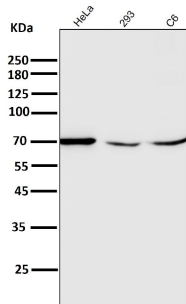
Product Name	Anti-EAAT2/GLT-1/SLC1A2 Rabbit Monoclonal Antibody
Reactive Species	Human, Mouse, Rat
Description	Boster Bio Anti-EAAT2/GLT-1/SLC1A2 Rabbit Monoclonal Antibody catalog # M01713. Tested in WB, IP applications. This antibody reacts with Human, Mouse, Rat.
Application	IP, WB
Clonality	Monoclonal ABED-19
Formulation	Rabbit IgG in phosphate buffered saline, pH 7.4, 150mM NaCl, 0.02% sodium azide and 50% glycerol, 0.4-0.5mg/ml BSA.
Storage Instructions	Store at -20°C for one year. For short term storage and frequent use, store at 4°C for up to one month. Avoid repeated freeze-thaw cycles.
Host	Rabbit
Uniprot ID	P43004

Technical Details

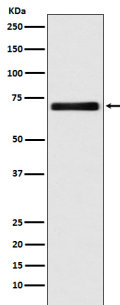
Immunogen	A synthesized peptide derived from human EAAT2
Isotype	Rabbit IgG
Form	Liquid
Concentration	Actual concentration vary by lot. Use suggested dilution ratio to decide dilution procedure.
Purification	Affinity-chromatography
Suggested Dilutions	Dilute the sample so that the expected range of concentrations fall within the detection range of this kit. If the expected range of concentration is unknown, a pilot test should be conducted to decide the optimal dilution ratio for your samples. Some PubMed article(s) citing the expression level of this target are as follows: Boster Bio's internal QC testing used: WB 1:500-1:2000

	IP 1:50
--	---------

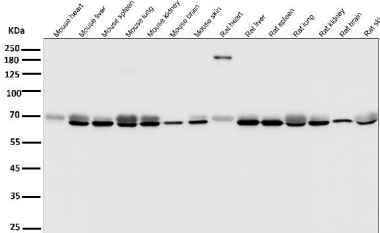
Anti-EAAT2/GLT-1/SLC1A2 Rabbit Monoclonal Antibody (M01713) Images



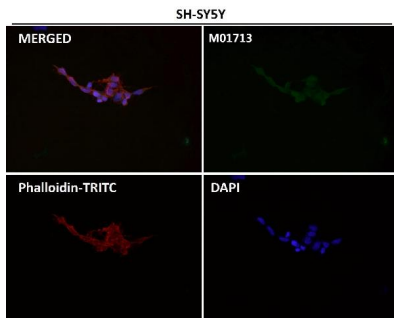
All lanes use the Antibody at 1:2K dilution for 1 hour at room temperature.



Western blot analysis of EAAT2 expression in HeLa cell lysate.



All lanes use the Antibody at 1:2K dilution for 1 hour at room temperature.



Immunofluorescent analysis using the Antibody at 1:50 dilution.

2 Publications Citing This Product

1. PubMed ID: 33484756, Song T, Chen W, Chen X, Zhang H, Zou Y, Wu H, Lin F, Ren L, Kang Y, Lei H. Repeated fluoxetine treatment induces transient and long-term astrocytic plasticity in the medial prefrontal cortex of normal adult rats. *Prog Neuropsychopharmacol Biol Psychiatry*. 2021 Jan 20
2. PubMed ID: 25371754, Ding Y, Zhang K, Liu S, Zhang Q, Ma C, Bruce Ic, Zhang X. *Exp Ther Med*. 2014 Dec;8(6):1909-1913. Epub 2014 Oct 15. Tumor Necrosis Factor-?? Promotes The Expression Of Excitatory Amino-Acid Transporter 2 In Astrocytes: Optimal Concentration And Inc...

Visit bosterbio.com/anti-eaat2-rabbit-monoclonal-antibody-m01713-boster.html to see all 2 publications.

Submit a product review to Biocompare.com

Submit a review of this product to Biocompare.com to receive a \$20 Amazon.com giftcard! Your reviews help your fellow scientists make the right decisions. Thank you for your contribution.



Anti-EAAT2/GLT-1/SLC1A2 Rabbit Monoclonal Antibody