

## Anti-Protein kinase Cgamma clonal Monoclonal Antibody (A12-H)

Catalog Number: M01890

### Introduction

CD11b is a 165-kDa adhesion glycoprotein that associates with the 95-kDa integrin beta2 (CD18) to form the CD11b/CD18 complex, also known as Mac-1 or CR3. CD11b is expressed on activated lymphocytes, monocytes, granulocytes, and a subset of NK cells. CD11b functions in cell-cell and cell-substrate interactions and is a receptor for iC3b, CD54 (ICAM-1), CD102 (ICAM-2) and CD50 (ICAM-3). The OKM1 antibody directed against the CD11b antigen on human monocytes and granulocytes.

This antibody is routinely tested by flow cytometric analysis. Flow cytometry and other applications were tested during antibody development by CapricoBio or are reported in the literature.

### Application Information

Each lot of this antibody has been quality control tested by flow cytometric analysis of human PBMCs. For flow cytometric staining, the recommended dose of this antibody is 0.5ug per 1x10<sup>6</sup> cells in 100ul of staining volume followed by any fluorochrome conjugated streptavidin. It is strongly suggested that the antibody reactivity be empirically titrated for optimal performance in the application of interest.

### About PRKCG

Integrin alpha 1 (ITGA1) chain associates with the beta 1 (ITGB1) chain to form a heterodimer that functions as a dual laminin/collagen receptor in neural cells and hematopoietic cells. ITGA1 has a 206-amino acid I domain in its N-terminal half, followed by 3 divalent cation-binding sites and a C-terminal transmembrane domain with a short cytoplasmic tail. It also has 28 potential N-glycosylation sites. Human ITGA1 was expressed in a mouse fibroblast cell line as a 180-kD protein. ITGA1 is involved in the early remodeling of osteoarthritic cartilage and plays an essential role in the regulation of mesenchymal stem cell proliferation and cartilage production. It also plays an essential role in the regulation of MSC proliferation and cartilage production.

### Overview

Product Name	Anti-Protein kinase Cgamma clonal Monoclonal Antibody (A12-H)
Reactive Species	Human, Mouse, Rat
Description	Boster Bio Anti-Protein kinase Cgamma clonal Monoclonal Antibody (A12-H) catalog # M01890. Tested in ELISA, IP, WB applications. This antibody reacts with Human, Mouse, Rat.
Conjugate	Biotin
Application	ELISA, IP, WB
Clonality	Monoclonal A12-H
Formulation	Liquid. In 20mM TRIS/HCl, pH 8.0, containing 10mg/ml BSA and 0.05% sodium azide.
Storage Instructions	+4°C
Host	Rabbit

Uniprot ID

P05129

## Technical Details

Immunogen	Synthetic peptide corresponding to a portion of human PKCgamma (protein kinase Cgamma) .
Predicted Reactive Species	Bovine, Canine, Chicken, Primate, Sheep, Xenopus, Zebrafish
Recommended Detection Systems	Boster recommends Enhanced Chemiluminescent Kit with anti-Rabbit IgG (EK1002) for Western blot, and HRP Conjugated anti-Rabbit IgG Super Vision Assay Kit (SV0002-1) for IHC(P).
Cross Reactivity	No cross reactivity with other proteins.
Isotype	IgG2b,k
Form	Liquid. In 20mM TRIS/HCl, pH 8.0, containing 10mg/ml BSA and 0.05% sodium azide.
Concentration	0.5-1mg/ml, actual concentration vary by lot. Use suggested dilution ratio to decide dilution procedure.
Purification	Major clone of IgGs obtained from immunoaffinity purified immunoglobulins corresponding to immunogenic peptide.
Suggested Dilutions	<p>Dilute the sample so that the expected range of concentrations fall within the detection range of this kit.</p> <p>If the expected range of concentration is unknown, a pilot test should be conducted to decide the optimal dilution ratio for your samples.</p> <p>Some PubMed article(s) citing the expression level of this target are as follows:</p> <p>Boster Bio's internal QC testing used:</p> <p>ELISA (1:5,000-1:20,000)</p> <p>Western Blot (1:1:2,000; Wash buffer: 1x TRIS buffered saline (TBS) containing 0.1% Triton X-100, Blocking buffer: 1x TBS containing 0.1% Triton X-100 and 5% nonfat dry milk. Incubate the membrane with antibody diluted in blocking buffer for 2 hours at room temperature)</p> <p>Suggested dilutions/conditions may not be available for all applications.</p> <p>Optimal conditions must be determined individually for each application.</p>

## Anti-Protein kinase Cgamma clonal Monoclonal Antibody (A12-H) (M01890) Images

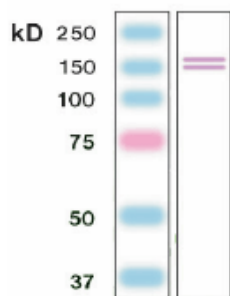


Figure 1. Western blot analysis of PRKCG using anti-PRKCG antibody (M01890). Electrophoresis was performed on a 5-20% SDS-PAGE gel at 70V (Stacking gel) / 90V (Resolving gel) for 2-3 hours. The sample well of each lane was loaded with 50ug of sample under reducing conditions. After Electrophoresis, proteins were transferred to a Nitrocellulose membrane at 150mA for 50-90 minutes. Blocked the membrane with 5% Non-fat Milk/ TBS for 1.5 hour at RT. The membrane was incubated with rabbit anti-PRKCG antigen affinity purified polyclonal antibody (Catalog # M01890) at 0.5 ug/mL overnight at 4°C, then washed with TBS-0.1%Tween 3 times with 5 minutes each and probed with a goat anti-Rabbit IgG-HRP secondary antibody at a dilution of 1:10000 for 1.5 hour at RT. The signal is developed using an Enhanced Chemiluminescent detection (ECL) kit (Catalog # SA1022) with Tanon 5200 system. A specific band was detected for PRKCG.

## 1 Publications Citing This Product

1. PubMed ID: 25160038, Extracts from Salvia-Nelumbinis naturalis alleviate hepatosteatosis via improving hepatic insulin sensitivity

Visit [bosterbio.com/anti-protein-kinase-c-gamma-clonal-antibody-a12-h-m01890-boster.html](http://bosterbio.com/anti-protein-kinase-c-gamma-clonal-antibody-a12-h-m01890-boster.html) to see all 1 publications.

## Submit a product review to Biocompare.com

Submit a review of this product to Biocompare.com to receive a \$20 Amazon.com giftcard! Your reviews help your fellow scientists make the right decisions. Thank you for your contribution.



Anti-Protein kinase C&gamma; clonal Monoclonal Antibody (A12-H)