

Anti-GPC3 / Glypican-3 Reference Antibody (codrituzumab)

Catalog Number: M01922-2

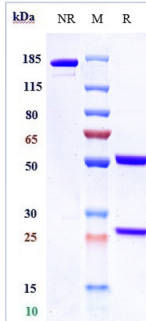
Overview

Product Name	Anti-GPC3 / Glypican-3 Reference Antibody (codrituzumab)
Reactive Species	Human
Description	Boster Bio Anti-GPC3 / Glypican-3 Reference Antibody (codrituzumab) (Catalog # M01922-2). Tested in Flow Cytometry, ELISA, FTA. This antibody reacts with Human. Endotoxin: < 0.659EU/ug,determined by LAL method. Expression system: CHO Cell
Application	ELISA, Flow Cytometry, Functional Assay, Kinetics
Clonality	Monoclonal
Formulation	Purified monoclonal antibody supplied in PBS, pH6.0, without preservative.This antibody is purified through a protein A column.
Storage Instructions	Maintain refrigerated at 2-8°C for up to 2 weeks. For long-term storage, aliquot and store at -20°C to avoid repeated freeze-thaw cycles.
Uniprot ID	P51654

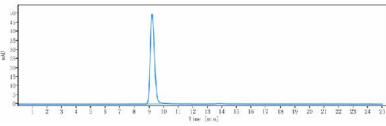
Technical Details

Isotype	IgG1
Form	Liquid
Concentration	1mg/ml

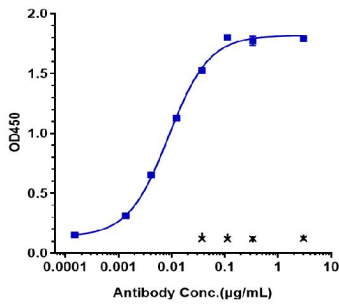
Anti-GPC3 / Glypican-3 Reference Antibody (codrituzumab) (M01922-2) Images



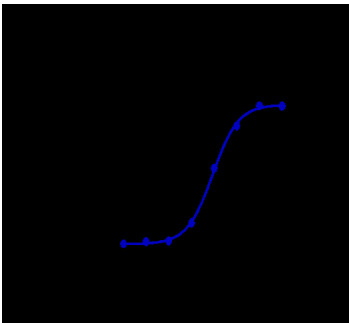
Anti-GPC3/Glypican-3 Reference Antibody (codrituzumab) on SDS-PAGE under reducing (R) condition. The gel was stained with Coomassie Blue. The purity of the protein is greater than 95%



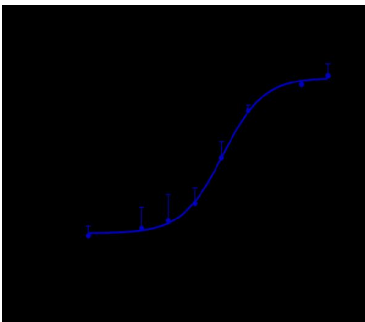
The purity of Anti-GPC3/Glypican-3 Reference Antibody (codrituzumab) is more than 95%



Immobilized human GPC3

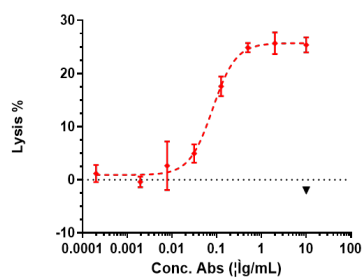


Human GPC3 CHOS cells were stained with Anti-GPC3/Glypican-3 Reference Antibody (codrituzumab) and negative control protein respectively



The endocytosis ratio codrituzumab by HuH-7 increased with the increase of antibody concentration

Anti-GPC3/Glypican-3 Reference Antibody (Codrituzumab)-induced ADCC activity was evaluated using



human GPC3 CHOS Cell. The max Lysis rate was approximately 30%.

Submit a product review to Biocompare.com

Submit a review of this product to Biocompare.com to receive a \$20 Amazon.com giftcard! Your reviews help your fellow scientists make the right decisions. Thank you for your contribution.



Anti-GPC3 / Glypican-3 Reference Antibody (codrituzumab)