

Anti-NPC1L1 Rabbit Monoclonal Antibody

Catalog Number: M01954

About NPC1L1

Furin is likely to represent the ubiquitous endoprotease activity within constitutive secretory pathways and capable of cleavage at the RX (K/R) R consensus motif.

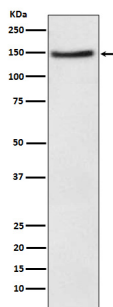
Overview

Product Name	Anti-NPC1L1 Rabbit Monoclonal Antibody
Reactive Species	Human
Description	Boster Bio Anti-NPC1L1 Rabbit Monoclonal Antibody catalog # M01954. Tested in WB application. This antibody reacts with Human.
Application	WB
Clonality	Monoclonal 21N41
Formulation	Rabbit IgG in phosphate buffered saline, pH 7.4, 150mM NaCl, 0.02% sodium azide and 50% glycerol, 0.4-0.5mg/ml BSA.
Storage Instructions	Store at -20°C for one year. For short term storage and frequent use, store at 4°C for up to one month. Avoid repeated freeze-thaw cycles.
Host	Rabbit
Uniprot ID	Q9UHC9

Technical Details

Immunogen	A synthesized peptide derived from human NPC1L1
Isotype	IgG
Form	Liquid
Concentration	Actual concentration vary by lot. Use suggested dilution ratio to decide dilution procedure.
Purification	Affinity-chromatography
Suggested Dilutions	Dilute the sample so that the expected range of concentrations fall within the detection range of this kit. If the expected range of concentration is unknown, a pilot test should be conducted to decide the optimal dilution ratio for your samples. Some PubMed article(s) citing the expression level of this target are as follows: Boster Bio's internal QC testing used: WB 1:500-1:2000

Anti-NPC1L1 Rabbit Monoclonal Antibody (M01954) Images



Western blot analysis of Niemann Pick C1 Like 1 expression in HeLa cell lysate.

Submit a product review to Biocompare.com

Submit a review of this product to Biocompare.com to receive a \$20 Amazon.com giftcard! Your reviews help your fellow scientists make the right decisions. Thank you for your contribution.



Anti-NPC1L1 Rabbit Monoclonal Antibody