

## Anti-Cytokeratin 19 (CK-19) KRT19 Rabbit Monoclonal Antibody, Clone#RM364

Catalog Number: M02101-4

### Overview

Product Name	Anti-Cytokeratin 19 (CK-19) KRT19 Rabbit Monoclonal Antibody, Clone#RM364
Reactive Species	Human
Description	Boster Bio Anti-Cytokeratin 19 (CK-19) KRT19 Rabbit Monoclonal Antibody, Clone#RM364 (Catalog # M02101-4). Tested in IHC, WB applications. This antibody reacts with Human.
Application	IHC, WB
Clonality	Monoclonal RM364
Formulation	50% Glycerol/PBS with 1% BSA and 0.09% sodium azide
Storage Instructions	Store at -20°C for one year. Avoid repeated freeze-thaw cycles.
Host	Rabbit
Uniprot ID	P08727

### Technical Details

Immunogen	A peptide corresponding to the C-terminus of human CK-19 (Cytokeratin-19)
Cross Reactivity	This antibody reacts human CK-19 (Cytokeratin-19)
Isotype	Rabbit IgG
Form	Liquid
Concentration	0.5-1mg/ml, actual concentration vary by lot. Use suggested dilution ratio to decide dilution procedure.
Purification	Protein A affinity purified from an animal origin-free culture supernatant
Suggested Dilutions	<p>Dilute the sample so that the expected range of concentrations fall within the detection range of this kit.</p> <p>If the expected range of concentration is unknown, a pilot test should be conducted to decide the optimal dilution ratio for your samples.</p> <p>Some PubMed article(s) citing the expression level of this target are as follows:</p> <p>Boster Bio's internal QC testing used:</p> <p>Immunohistochemistry (IHC): 1:500-1:1000 dilution</p> <p>WB: 1:1000-1:2000 dilution.</p>

## Anti-Cytokeratin 19 (CK-19) KRT19 Rabbit Monoclonal Antibody, Clone#RM364 (M02101-4) Images

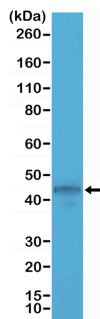


Figure 1. Western Blotting result  
Western Blot of MCF-7 cell lysate using anti-CK-19 rabbit monoclonal antibody (Clone RM364) at a 1:1000 dilution.

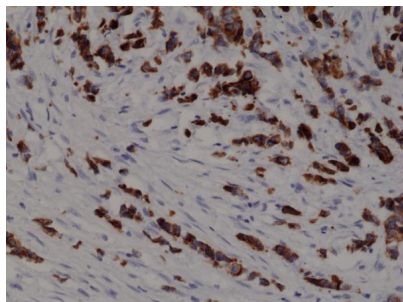


Figure 2. IHC result  
Immunohistochemical staining of formalin fixed and paraffin embedded human breast cancer tissue section using anti-CK-19 rabbit monoclonal antibody (Clone RM364) at a 1:1000 dilution.

### 1 Publications Citing This Product

1. PubMed ID: 15948249, Lu J, Gu Yp, Xu X, Liu Ml, Xie P, Song Hp. World J Gastroenterol. 2005 Jun 14;11(22):3426-30. Adult Islets Cultured In Collagen Gel Transdifferentiate Into Duct-Like Cells.

Visit [bosterbio.com/anti-cytokeratin-19-ck-19-rabbit-monoclonal-antibody-clone-rm364-m02101-4-boster.html](http://bosterbio.com/anti-cytokeratin-19-ck-19-rabbit-monoclonal-antibody-clone-rm364-m02101-4-boster.html) to see all 1 publications.

### Submit a product review to Biocompare.com

Submit a review of this product to Biocompare.com to receive a \$20 Amazon.com giftcard! Your reviews help your fellow scientists make the right decisions. Thank you for your contribution.



Anti-Cytokeratin 19 (CK-19) KRT19 Rabbit Monoclonal Antibody, Clone#RM364