

## Anti-pro Caspase 10 Rabbit Monoclonal Antibody

Catalog Number: M02190

### About CASP10

F-actin cross-linking protein which is thought to anchor actin to a variety of intracellular structures. This is a bundling protein. Probably involved in vesicular trafficking via its association with the CART complex. The CART complex is necessary for efficient transferrin receptor recycling but not for EGFR degradation.

### Overview

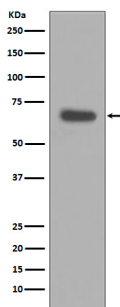
Product Name	Anti-pro Caspase 10 Rabbit Monoclonal Antibody
Reactive Species	Human, Mouse
Description	Boster Bio Anti-pro Caspase 10 Rabbit Monoclonal Antibody catalog # M02190. Tested in WB, IHC, ICC/IF, IP, Flow Cytometry applications. This antibody reacts with Human, Mouse.
Application	Flow Cytometry, IP, IF, IHC, ICC, WB
Clonality	Monoclonal GAF-3
Formulation	Rabbit IgG in phosphate buffered saline, pH 7.4, 150mM NaCl, 0.02% sodium azide and 50% glycerol, 0.4-0.5mg/ml BSA.
Storage Instructions	Store at -20°C for one year. For short term storage and frequent use, store at 4°C for up to one month. Avoid repeated freeze-thaw cycles.
Host	Rabbit
Uniprot ID	Q92851

### Technical Details

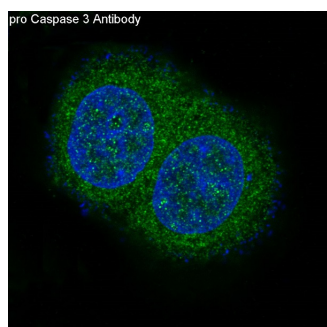
Immunogen	A synthesized peptide derived from human pro Caspase 10
Isotype	Rabbit IgG
Form	Liquid
Concentration	Actual concentration vary by lot. Use suggested dilution ratio to decide dilution procedure.
Purification	Affinity-chromatography
Suggested Dilutions	<p>Dilute the sample so that the expected range of concentrations fall within the detection range of this kit.</p> <p>If the expected range of concentration is unknown, a pilot test should be conducted to decide the optimal dilution ratio for your samples.</p> <p>Some PubMed article(s) citing the expression level of this target are as follows:</p> <p>Boster Bio's internal QC testing used:</p>

	WB 1:500-1:1000 IHC 1:50-1:200 ICC/IF 1:50-1:200 IP 1:10 FC 1:50
--	------------------------------------------------------------------------------

## Anti-pro Caspase 10 Rabbit Monoclonal Antibody (M02190) Images



Western blot analysis of pro Caspase 10 expression in HeLa cell lysate.



Immunofluorescent analysis of MCF-7 cells, using pro Caspase 10 Antibody.

### Submit a product review to Biocompare.com

Submit a review of this product to Biocompare.com to receive a \$20 Amazon.com giftcard! Your reviews help your fellow scientists make the right decisions. Thank you for your contribution.



Anti-pro Caspase 10 Rabbit Monoclonal Antibody