

Anti-PHOX2B Monoclonal Antibody

Catalog Number: M02221

About PHOX2B

F-actin cross-linking protein which is thought to anchor actin to a variety of intracellular structures. This is a bundling protein. Probably involved in vesicular trafficking via its association with the CART complex. The CART complex is necessary for efficient transferrin receptor recycling but not for EGFR degradation.

Overview

Product Name	Anti-PHOX2B Monoclonal Antibody
Reactive Species	Human, Mouse
Description	Boster Bio Anti-PHOX2B Monoclonal Antibody catalog # M02221. Tested in WB, IHC, ICC/IF applications. This antibody reacts with Human, Mouse.
Application	IF, IHC, ICC, WB
Clonality	Monoclonal AEFG-16
Formulation	Rabbit IgG in phosphate buffered saline, pH 7.4, 150mM NaCl, 0.02% sodium azide and 50% glycerol, 0.4-0.5mg/ml BSA.
Storage Instructions	Store at -20°C for one year. For short term storage and frequent use, store at 4°C for up to one month. Avoid repeated freeze-thaw cycles.
Host	Rabbit
Uniprot ID	Q99453

Technical Details

Immunogen	A synthesized peptide derived from human PHOX2B Involved in the development of several major noradrenergic neuron populations, including the locus coeruleus. Transcription factor which could determine a neurotransmitter phenotype in vertebrates. Enhances second-messenger-mediated activation of the dopamine beta-hydrolase and c-fos promoters, and of several enhancers including cAMP-response element and serum-response element.
Isotype	Rabbit IgG
Form	Liquid
Concentration	Actual concentration vary by lot. Use suggested dilution ratio to decide dilution procedure.
Purification	Affinity-chromatography
Suggested Dilutions	Dilute the sample so that the expected range of concentrations fall within the detection range of this kit.

If the expected range of concentration is unknown, a pilot test should be conducted to decide the optimal dilution ratio for your samples.

Some PubMed article(s) citing the expression level of this target are as follows:

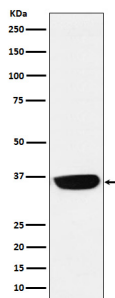
Boster Bio's internal QC testing used:

WB 1:500-1:2000

IHC 1:100-1:500

ICC/IF 1:50-1:200

Anti-PHOX2B Monoclonal Antibody (M02221) Images



Western blot analysis of PHOX2B expression in Neuro-2a cell lysate.

Submit a product review to Biocompare.com

Submit a review of this product to Biocompare.com to receive a \$20 Amazon.com giftcard! Your reviews help your fellow scientists make the right decisions. Thank you for your contribution.



Anti-PHOX2B Monoclonal Antibody