

Anti-PI 3 Kinase p110 delta PIK3CD Rabbit Monoclonal Antibody

Catalog Number: M02269

About PIK3CD

F-actin cross-linking protein which is thought to anchor actin to a variety of intracellular structures. This is a bundling protein. Probably involved in vesicular trafficking via its association with the CART complex. The CART complex is necessary for efficient transferrin receptor recycling but not for EGFR degradation.

Overview

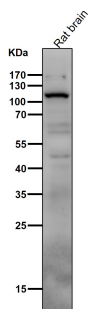
Product Name	Anti-PI 3 Kinase p110 delta PIK3CD Rabbit Monoclonal Antibody
Reactive Species	Human, Mouse, Rat
Description	Boster Bio Anti-PI 3 Kinase p110 delta PIK3CD Rabbit Monoclonal Antibody catalog # M02269. Tested in WB, ICC/IF applications. This antibody reacts with Human, Mouse, Rat.
Application	IF, ICC, WB
Clonality	Monoclonal ADEO-16
Formulation	Rabbit IgG in phosphate buffered saline, pH 7.4, 150mM NaCl, 0.02% sodium azide and 50% glycerol, 0.4-0.5mg/ml BSA.
Storage Instructions	Store at -20°C for one year. For short term storage and frequent use, store at 4°C for up to one month. Avoid repeated freeze-thaw cycles.
Host	Rabbit
Uniprot ID	O00329

Technical Details

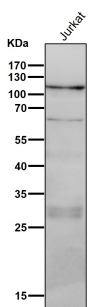
Immunogen	A synthesized peptide derived from human PI 3 Kinase p110 delta
Isotype	Rabbit IgG
Form	Liquid
Concentration	Actual concentration vary by lot. Use suggested dilution ratio to decide dilution procedure.
Purification	Affinity-chromatography
Suggested Dilutions	Dilute the sample so that the expected range of concentrations fall within the detection range of this kit. If the expected range of concentration is unknown, a pilot test should be conducted to decide the optimal dilution ratio for your samples. Some PubMed article(s) citing the expression level of this target are as follows: Boster Bio's internal QC testing used:

	WB 1:500-1:2000 ICC/IF 1:50-1:200
--	--------------------------------------

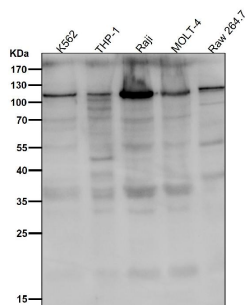
Anti-PI 3 Kinase p110 delta PIK3CD Rabbit Monoclonal Antibody (M02269) Images



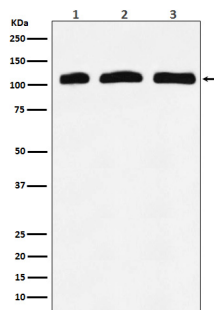
All lanes use the Antibody at 1:1K dilution for 1 hour at room temperature.



All lanes use the Antibody at 1:1K dilution for 1 hour at room temperature.

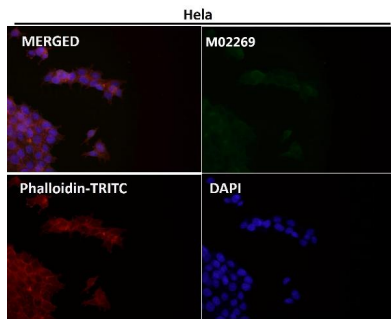
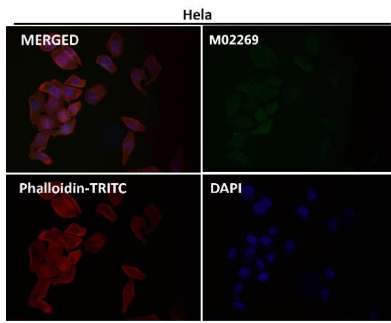


All lanes use the Antibody at 1:1K dilution for 1 hour at room temperature.

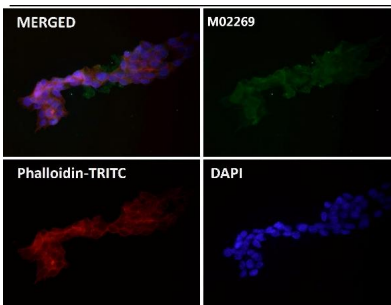


Western blot analysis of PI 3 Kinase p110 delta expression in (1) K562 cell lysate; (2) RAW 264.7 cell lysate; (3) Rat kidney lysate.

Immunofluorescent analysis using the Antibody at 1:50 dilution.



Immunofluorescent analysis using the Antibody at 1:50 dilution.



Immunofluorescent analysis using the Antibody at 1:50 dilution.

Submit a product review to Biocompare.com

Submit a review of this product to Biocompare.com to receive a \$20 Amazon.com giftcard! Your reviews help your fellow scientists make the right decisions. Thank you for your contribution.



Anti-PI 3 Kinase p110 delta PIK3CD Rabbit Monoclonal Antibody