

# Anti-Cytokeratin 17 (KRT17) (Basal Epithelial Marker) Monoclonal Antibody

Catalog Number: M02289

## About KRT17

Cytokeratin 17 (CK17) is normally expressed in the basal cells of complex epithelia but not in stratified or simple epithelia. Antibody to CK17 is an excellent tool to distinguish myoepithelial cells from luminal epithelium of various glands such as mammary, sweat and salivary. CK17 is expressed in epithelial cells of various origins, such as bronchial epithelial cells and skin appendages. It may be considered as epithelial stem cell marker because CK17 Ab marks basal cell differentiation. CK17 is expressed in SCLC much higher than in LADC. Eighty-five percent of the triple negative breast carcinomas immunoreact with basal cytokeratins including anti-CK17. Also important is that cases of triple negative breast carcinoma with expression of CK17 show an aggressive clinical course. Additionally, anti-CK17 and anti-MUC1 immunoreactivity represents pancreaticobiliary subtype whereas [anti-MUC2](#) and anti-CDX-2 positivity defines intestinal subtype.

## Overview

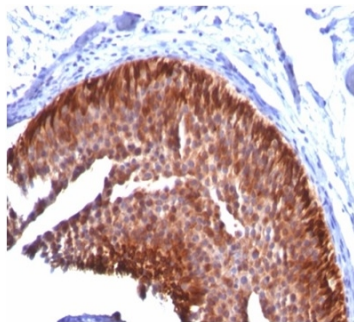
Product Name	Anti-Cytokeratin 17 (KRT17) (Basal Epithelial Marker) Monoclonal Antibody
Reactive Species	Cow, Goat, Human, Pig, Rat
Description	Boster Bio Anti-Cytokeratin 17 (KRT17) (Basal Epithelial Marker) Monoclonal Antibody (Catalog # M02289). Tested in IHC applications. This antibody reacts with Human, Rat, Cow, Goat, Pig.
Conjugate	Biotin
Application	IHC
Clonality	Monoclonal Clone: KRT17/778
Formulation	Prepared in 10mM PBS with 0.05% BSA & 0.05% azide. Also available WITHOUT BSA & azide at 1.0mg/ml.
Storage Instructions	Antibody with azide - store at 2 to 8 °C. Antibody without azide - store at -20 to -80 °C. Antibody is stable for 24 months. Non-hazardous. No MSDS required.
Host	Mouse
Uniprot ID	Q04695

## Technical Details

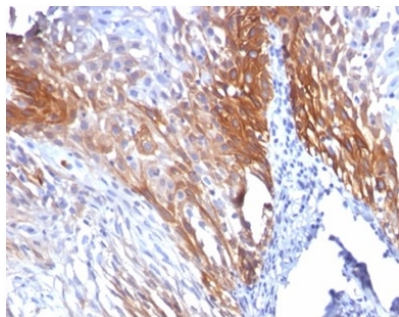
Immunogen	Recombinant full-length human KRT17 protein
Predicted Reactive Species	Pig, Rabbit
Cross Reactivity	Does not cross-react with primate, avian or amphibian GR.
Isotype	IgG2b, kappa

Form	Liquid
Concentration	Purified antibody with BSA and azide at 200ug/ml
Purification	200ug/ml of antibody purified from Bioreactor Concentrate by Protein A/G.
Suggested Dilutions	<p>Dilute the sample so that the expected range of concentrations fall within the detection range of this kit.</p> <p>If the expected range of concentration is unknown, a pilot test should be conducted to decide the optimal dilution ratio for your samples.</p> <p>Some PubMed article(s) citing the expression level of this target are as follows:</p> <p>Boster Bio's internal QC testing used:</p> <p>Immunohistochemistry (Formalin-fixed) (1-2ug/ml for 30 minutes at RT) (Staining of formalin-fixed tissues requires heating tissue sections in 10mM Tris with 1mM EDTA, pH 9.0, for 45 min at 95 &amp;degC followed by cooling at RT for 20 minutes)</p> <p>Optimal dilution for a specific application should be determined.</p>

## Anti-Cytokeratin 17 (KRT17) (Basal Epithelial Marker) Monoclonal Antibody (M02289) Images



Formalin-fixed, paraffin-embedded human bladder carcinoma stained with Anti-CK17 Mouse Monoclonal Antibody (KRT17/778).



Formalin-fixed, paraffin-embedded human cervical carcinoma stained with Anti-CK17 Mouse Monoclonal Antibody (KRT17/778).

### Submit a product review to Biocompare.com

Submit a review of this product to Biocompare.com to receive a \$20 Amazon.com giftcard! Your reviews help your fellow scientists make the right decisions. Thank you for your contribution.



Anti-Cytokeratin 17 (KRT17) (Basal Epithelial Marker) Monoclonal Antibody